

2025-2026 John M. DeGrove Webinar Series



Closing Critical Gaps **Local Strategies & Statewide Partnerships for** **Florida Wildlife Corridor Protection**

Image: "Dedicated bus lane with far-side bus bulb (colored)" by NACTO/Flickr



April 15, 2026

1000FOF.ORG



Audio Troubleshooting

- **No sound?** Check if your speakers/headphones are plugged in, not muted, and connected properly.
- **Using Bluetooth?** Ensure it's turned on and paired correctly.
- **Test audio** in Zoom: Settings > Audio > Test Speaker & Microphone.
- **Update permissions:** Ensure Zoom can access your microphone.
- **Need help?** Visit zoom.us/support for more troubleshooting.



Professional Certification Credits



- **Reminder:** We only offer professional certification credits for participants who attend the live webinar!

Building Better Communities, Saving Special Places

We are Florida's leading nonprofit advocate for sustainable communities

Work with citizens, community and state leaders, conservation and business groups

Educate, advocate and negotiate to protect Florida's high quality of life



Dr. John M. DeGrove

May 4, 1924 – April 13, 2012



Icon of comprehensive planning both in Florida and across the nation

Co-founder of 1000 Friends of Florida

To find out more, please visit:

1000friendsofflorida.org/dr-degrove



John M. DeGrove Webinar Sponsors

FLORIDA STEWARD

Robert L. Parks, P.L.

NATHANIEL REED SOCIETY

Robert M. Rhodes

Susan Trevarthen

FRIEND

Kimberly A. DeGrove & Clyde Partin

Dickman Law Firm

Richard Levey/Levey Consulting

SPONSOR

Thomas J. Baird

Ned and Carolynn Cooper

Linda Daniels

William M. DeGrove

Vivienne Handy

James M. Jackson, Jr.

Jim Nicholas

Nancy Stroud

Laurilee Thompson

*Become a
webinar
sponsor*



John M. DeGrove Webinar Sponsors

ANNIVERSARY CLUB

Donna Bosold
Galina Tachieva,
DPZ |CoDesign

SUPPORTER

American Planning Association,
Florida Chapter
Terrell Arline
Mary Bridgman
David Flinchum, ASLA, AICP
Harmony Institute
Cindy Lerner

Joan Matthews
MERISTEM
Suze Peace
Thomas C. Peterson, ASLA,
Landscape Architecture
Alan Reynolds/Reynolds
Advisors, LLC
Vicki Silver
Jane West

*Become a
webinar
sponsor*



Professional Certification Credits

For those that attend the **live** event, this webinar has been approved for credits for:

- American Institute of Certified Planners (1.5 AICP CM #9325853)
- Florida Bar Attorneys (2.0 General CLEs, 2603997N)
- Florida Environmental Health Professionals (1.5 Contact Hours or 0.15 CEUs)
- Certified Floodplain Managers (1 CEC)
- Florida Landscape Architects (1.5 DBPR Credits #0015762)

1000 Friends has not applied for credits for those who view this broadcast at a later time.

Find credits for past webinars at 1000fof.org/upcoming-webinars/credits



Follow-up Survey, Certificate of Attendance

In the follow up email for the **LIVE WEBINAR** you will receive:

- A link to a **brief survey** to help us improve future webinars

You will also receive a **certificate of attendance** for this webinar, emailed to you within a couple of days post-webinar. Please email **friends@1000fof.org** if you do not receive a certificate within a week.

Information on professional certification credits for past webinars are available at ***1000fof.org/upcoming-webinars/credits***

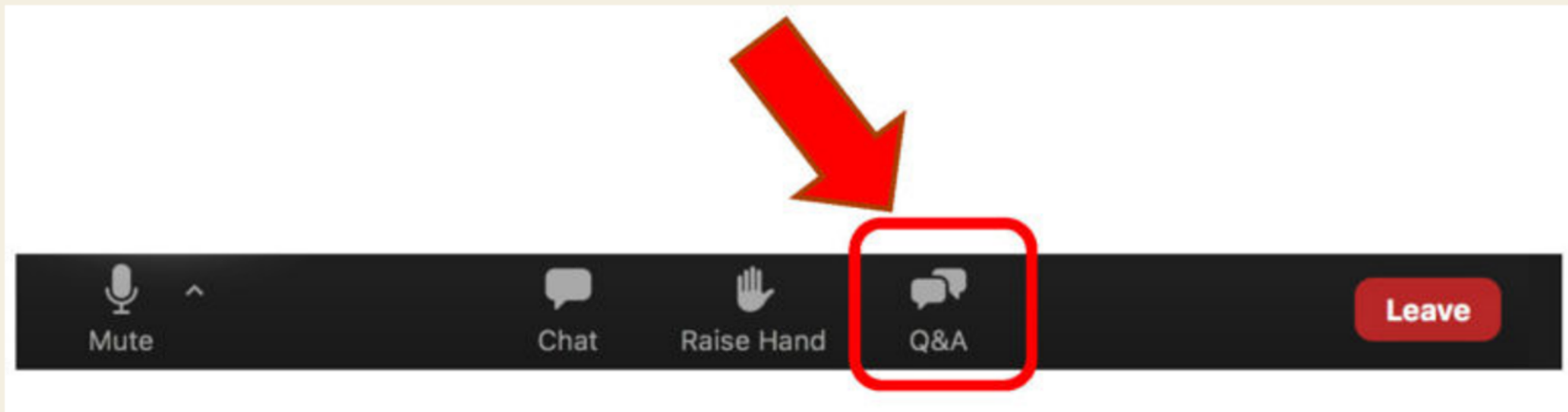
Email **friends@1000fof.org** with any questions about credits or your certificate.



Questions & Answers

Please submit questions for speakers using the Q&A button on your Zoom control panel.

Keep questions succinct and, if possible, indicate who your question should be directed to.





Allyn Childress, AICP



Kimberleigh Dinkins



Ben Naselius

Allyn Childress



AICP-certified planner with 30+ years of experience in environmental policy, interagency coordination, and science communications. Currently with the Florida Wildlife Corridor Foundation, where she supports efforts to protect and connect Florida's critical wildlife habitats. Previously with the U.S. Department of the Interior's Office of Everglades Restoration Initiatives. Master of Urban and Regional Planning (Environmental Planning) from Florida Atlantic University. Board member, Friends of Brooker Creek Preserve since 2006.

Kimberleigh Dinkins



Kim is Policy & Planning Director at 1000 Friends of Florida, where she works with citizens and advocates before the Florida Legislature to advance sound community planning that protects Florida's lands, waters, and quality of life. She brings more than 15 years of experience in natural resource policy and management, including roles with Save the Manatee Club, the Marion County Board of County Commissioners, and the Florida Department of Environmental Protection. Kim holds bachelor's and master's degrees from the University of Florida in environmental science and soil and water science.

Ben Naselius



Ben serves as the Red Hills Planner for Tall Timbers Land Conservancy in Tallahassee, where he advocates for conservation lands through land use and policy. He previously worked with the Florida Department of Commerce on comprehensive planning compliance and with Florida Department of Transportation on land use and rural planning, experience he now brings to the nonprofit world to further land conservation in the Big Bend region.

The Florida Wildlife Corridor Foundation: Minding the Gaps

Allyn Childress, AICP
Conservation Director



Florida
**WILDLIFE
CORRIDOR**
Foundation





Florida **WILDLIFE CORRIDOR** Foundation

Our Mission

champion a collaborative
campaign to permanently
connect, protect and restore
the Florida Wildlife Corridor

Inspiration • Education • Advocacy



Map painting by Michael Reagan

The Florida Wildlife Corridor is an 18-million-acre footprint of connected land and water...

...representing our best opportunity to safeguard a biodiverse and sustainable wild Florida for future generations.



Map painting by Michael Reagan

Connecting

Prioritizing

Collaborating

THE FLORIDA WILDLIFE CORRIDOR

Habitat

The Corridor connects lands and waters including:

75 State Parks

32 State Forests

7 National Parks/Preserves/Forests



THE FLORIDA WILDLIFE CORRIDOR

Habitat

The Corridor connects lands and waters including:

182 First- and Second-Magnitude Springs

1,300 Named Rivers and Streams



THE FLORIDA WILDLIFE CORRIDOR

Wildlife

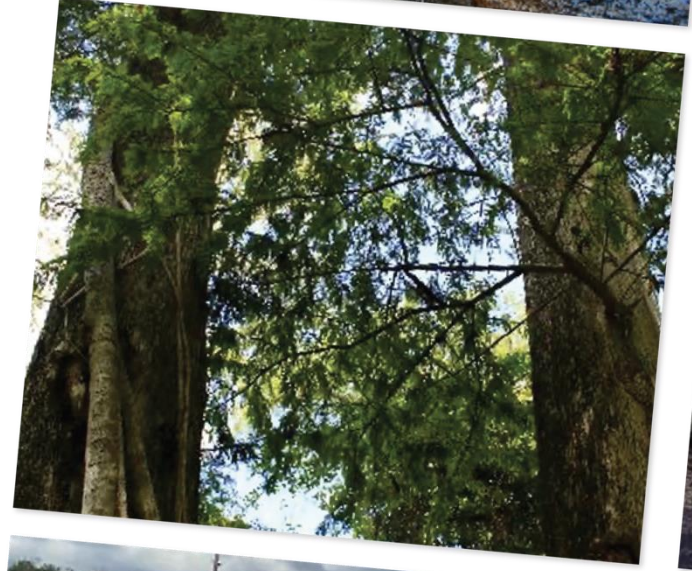
The Corridor is home to over **1,700** species, including **131** imperiled animals



THE FLORIDA WILDLIFE CORRIDOR

People

The Corridor supports
at least **114,000 jobs**
and provides **\$30 billion**
in annual revenue

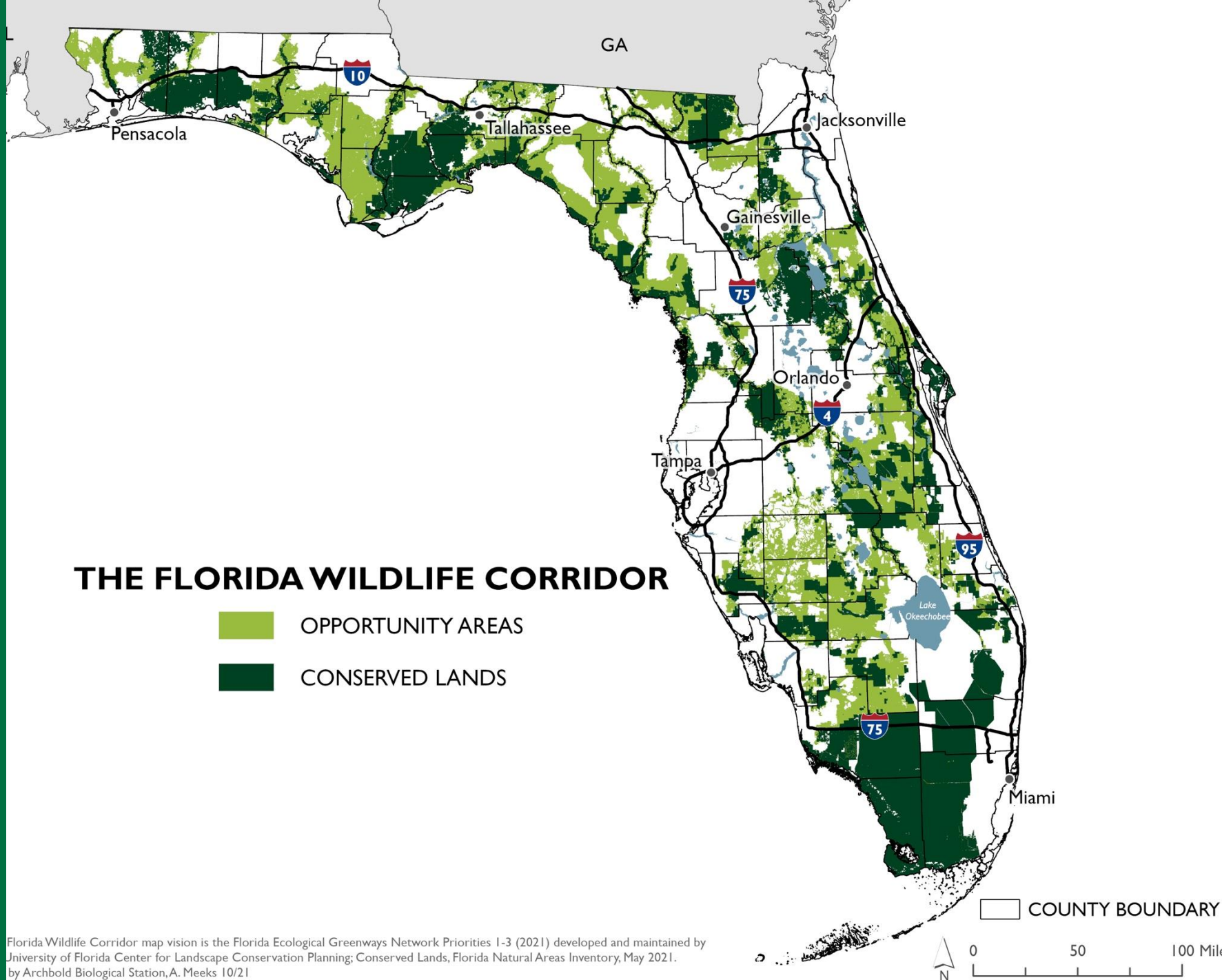


Florida Wildlife Corridor

18 million acres

10 million acres
protected

8 million acres
unprotected



Florida Wildlife Corridor map vision is the Florida Ecological Greenways Network Priorities 1-3 (2021) developed and maintained by University of Florida Center for Landscape Conservation Planning; Conserved Lands, Florida Natural Areas Inventory, May 2021. by Archbold Biological Station, A. Meeks 10/21

Connecting

Prioritizing

Collaborating

URGENCY

2010 Baseline

Statewide 2010 Baseline

- Developed
- Protected
- Other



2070 Trend

Statewide 2070 Trend

- Developed
- Protected
- Other



2070 Alternative

Statewide 2070 Alternative

- Developed
- Protected
- Other



33 million people by 2070

Connecting, protecting and restoring the Corridor

How we grow makes all the difference. Protecting the Corridor can be done even as our population grows. However, it will require careful and intentional planning around the vital ecological connections illustrated by the Florida Wildlife Corridor.

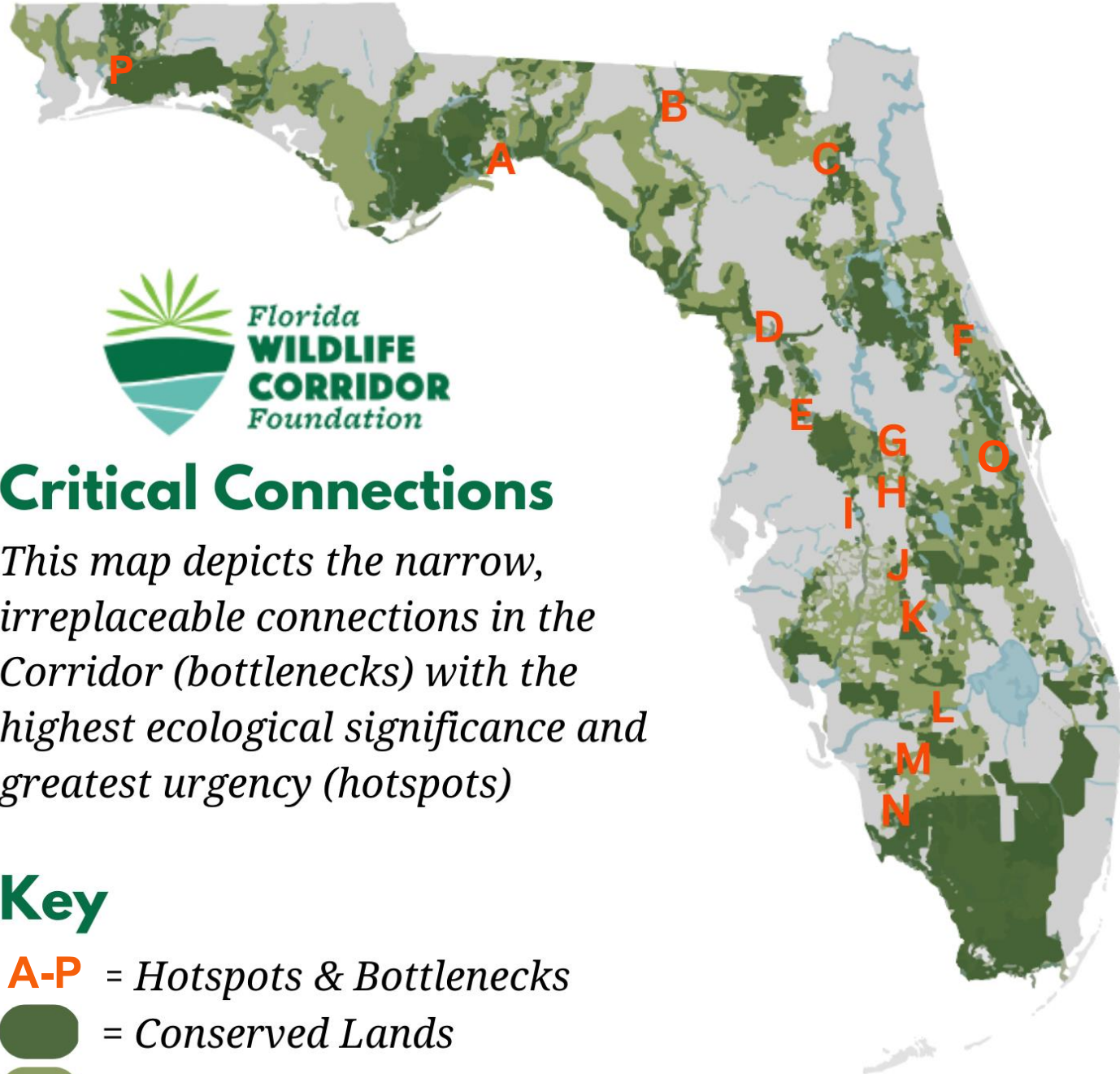
VULNERABILITY



CARLTON WARD

Networks of connected and protected areas
are more resilient than isolated patches.

PRIORITIZING



Critical Connections

This map depicts the narrow, irreplaceable connections in the Corridor (bottlenecks) with the highest ecological significance and greatest urgency (hotspots)

Key

- A-P** = Hotspots & Bottlenecks
-  = Conserved Lands
-  = Opportunity Areas

Connecting

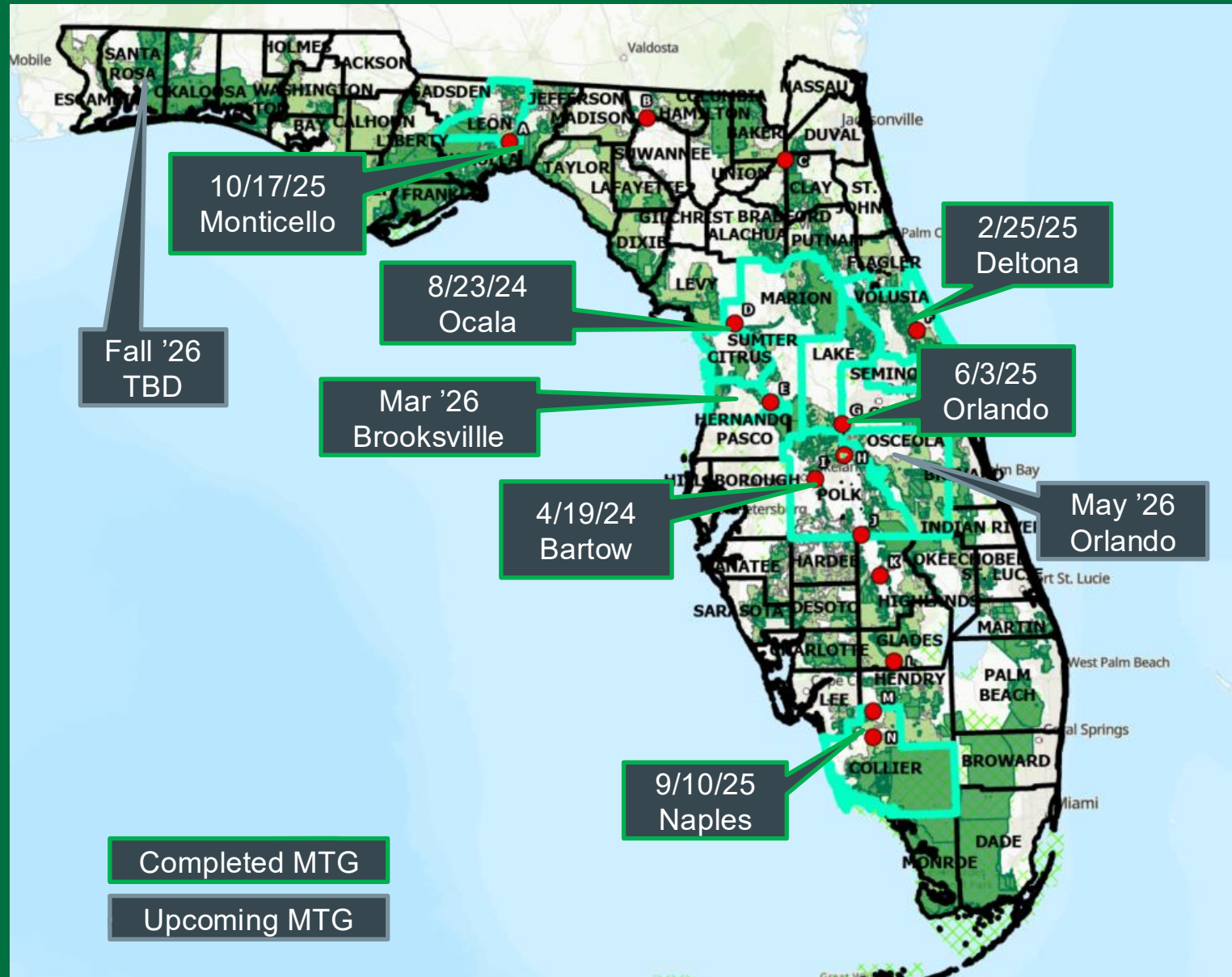
Prioritizing

Collaborating

Minding the Gaps with Local Experts

Mind the Gaps Workshops

- Develop conservation solutions to the Corridor's urgent, vulnerable, and irreplaceable gaps through collaborative local engagement.
- Apply Conservation Tools & Levers





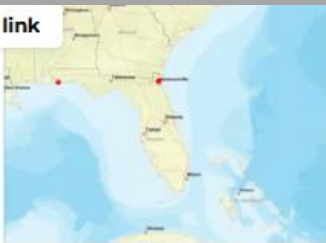
CORRIDOR CONNECT

Planning Toolbox

Tools to help inform conservation decisions

FDOT

external link

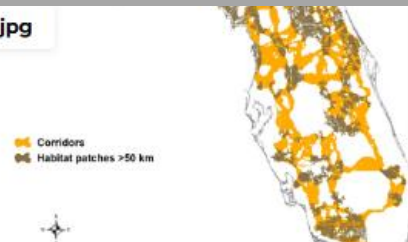


ETDM Environmental Screening Tool



Archbold

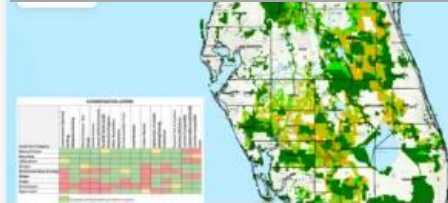
jpg



Black Bear Corridors and Habitat...



Corridor Foundation



Corridor Landuse Cover



Archbold

external link

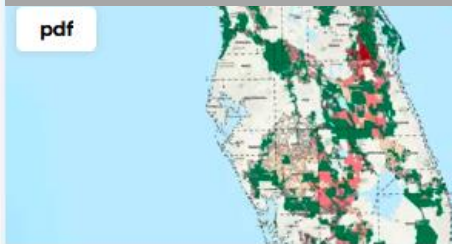


Florida Circuit Model



Archbold

pdf

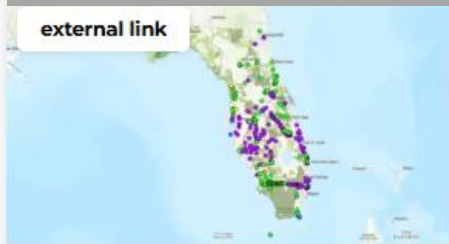


Horizon Model Map (Statewide)



FDOT

external link



FDOT Statewide Wildlife Crossings...



UF CLCP

external link



FEGN Online Map Viewer



Corridor Foundation

The Florida Wildlife Corridor

- Conserved Lands
- Corridor Opportunity Areas
- Corridor Proposed Florida Forever Program
- Corridor Proposed Rural and Family Link Protection Program Projects

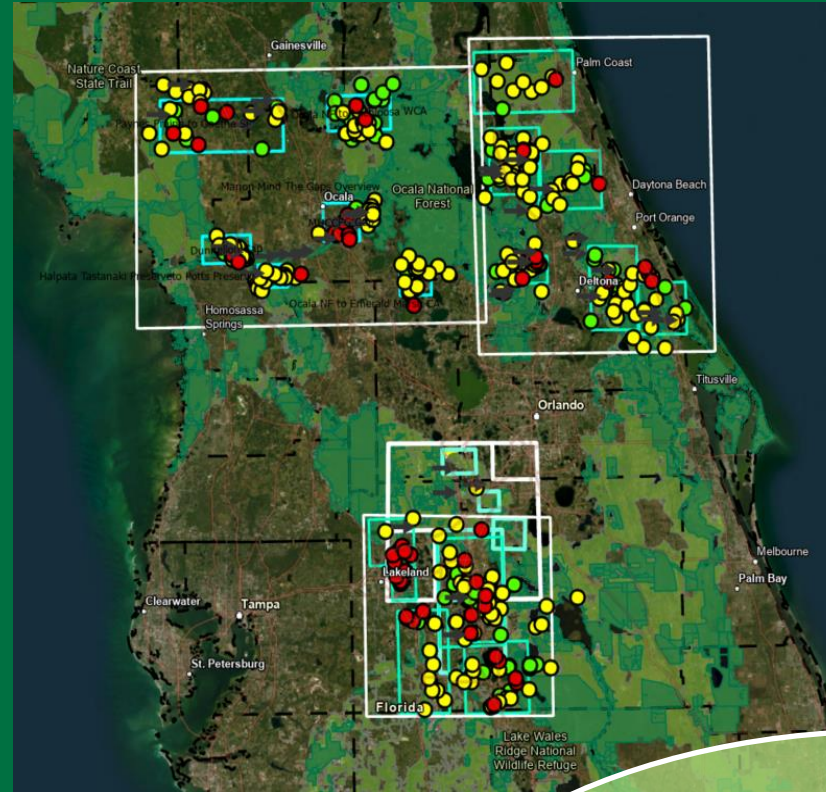






Florida Wildlife Corridor Map - ...



Conservation Levers

Finding solutions to close conservation gaps between existing conserved lands



	Developed or pending development
	Open opportunity
	Conserved or pending conservation
	Planned or existing wildlife crossing



- Fee-simple Acquisition
- Conservation Easements
- Mitigation Banking
- Ecotourism/Agritourism
- Payment for Ecosystem Services
- Corridor Compatible Communities
- Corridor Compatible Solar



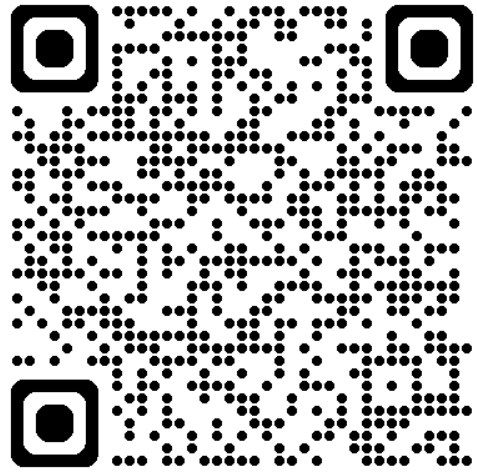


Florida Wildlife Corridor Foundation: Conservation Levers

Explore various conservation strategies landowners can employ to protect lands within the Florida Wildlife Corridor

Isabel Knuteson & Kristen Nowak

November 18, 2025



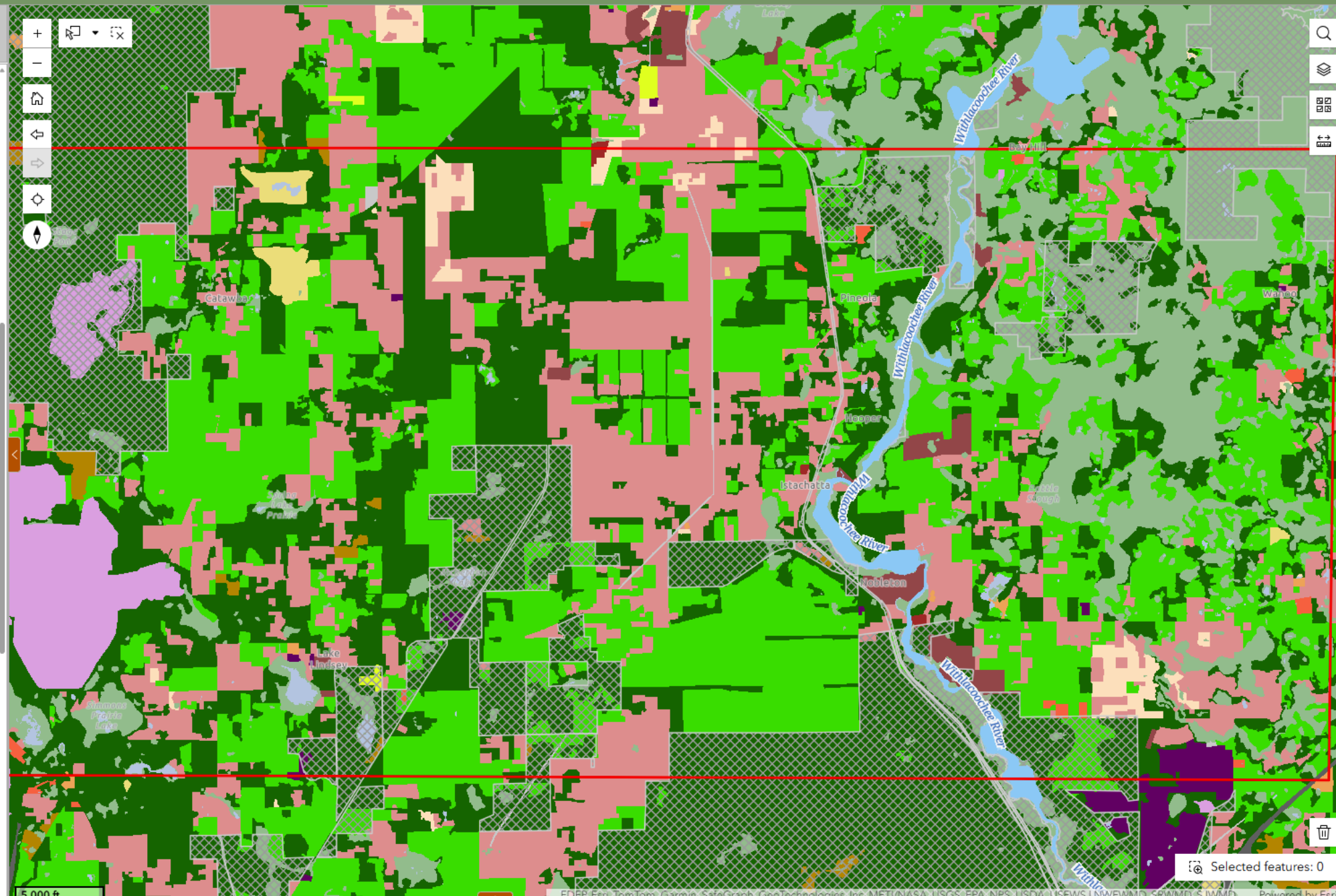
**Accelerating
Conservation with
Local Governments
& Land Trusts**

Layers Legend Bookmarks

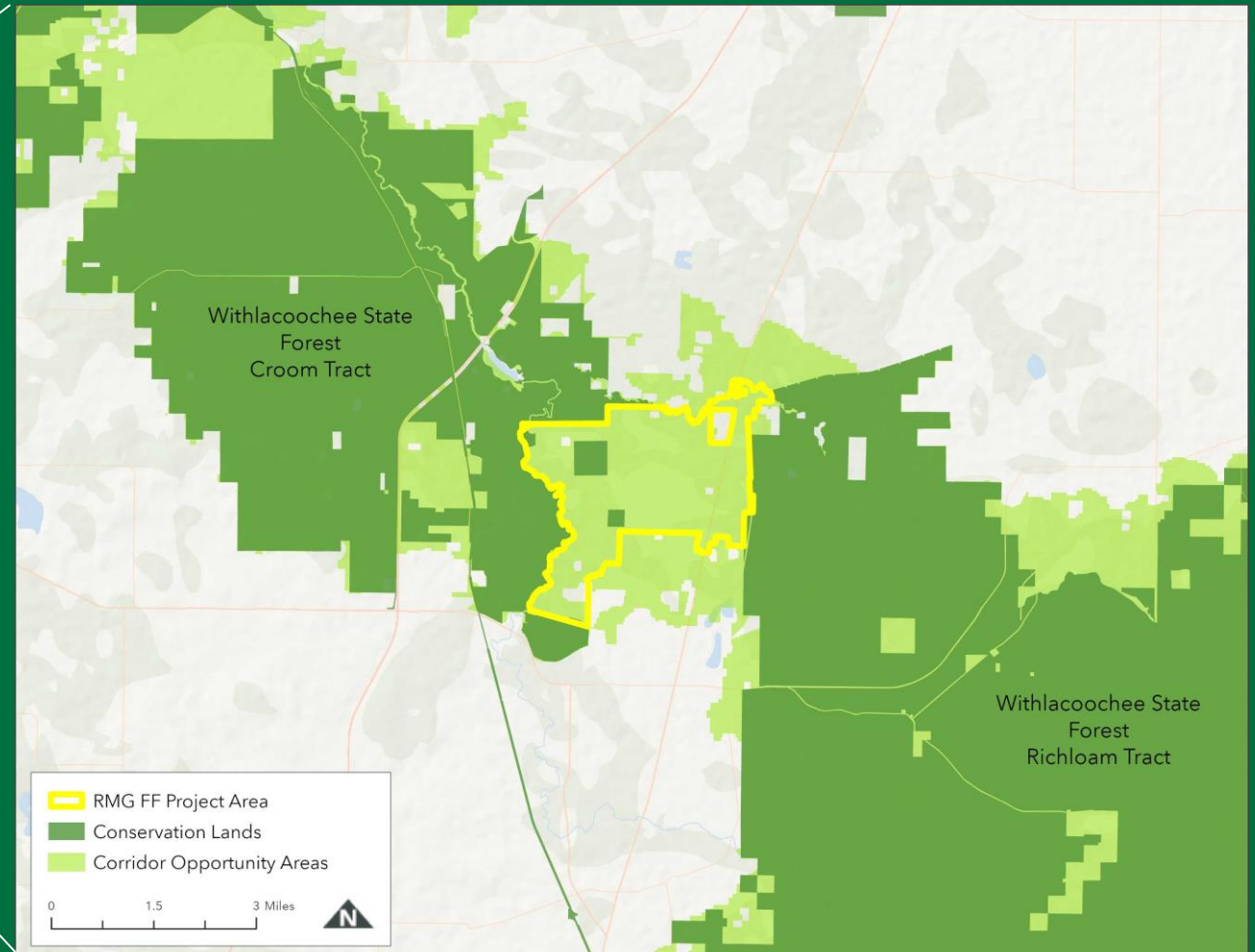
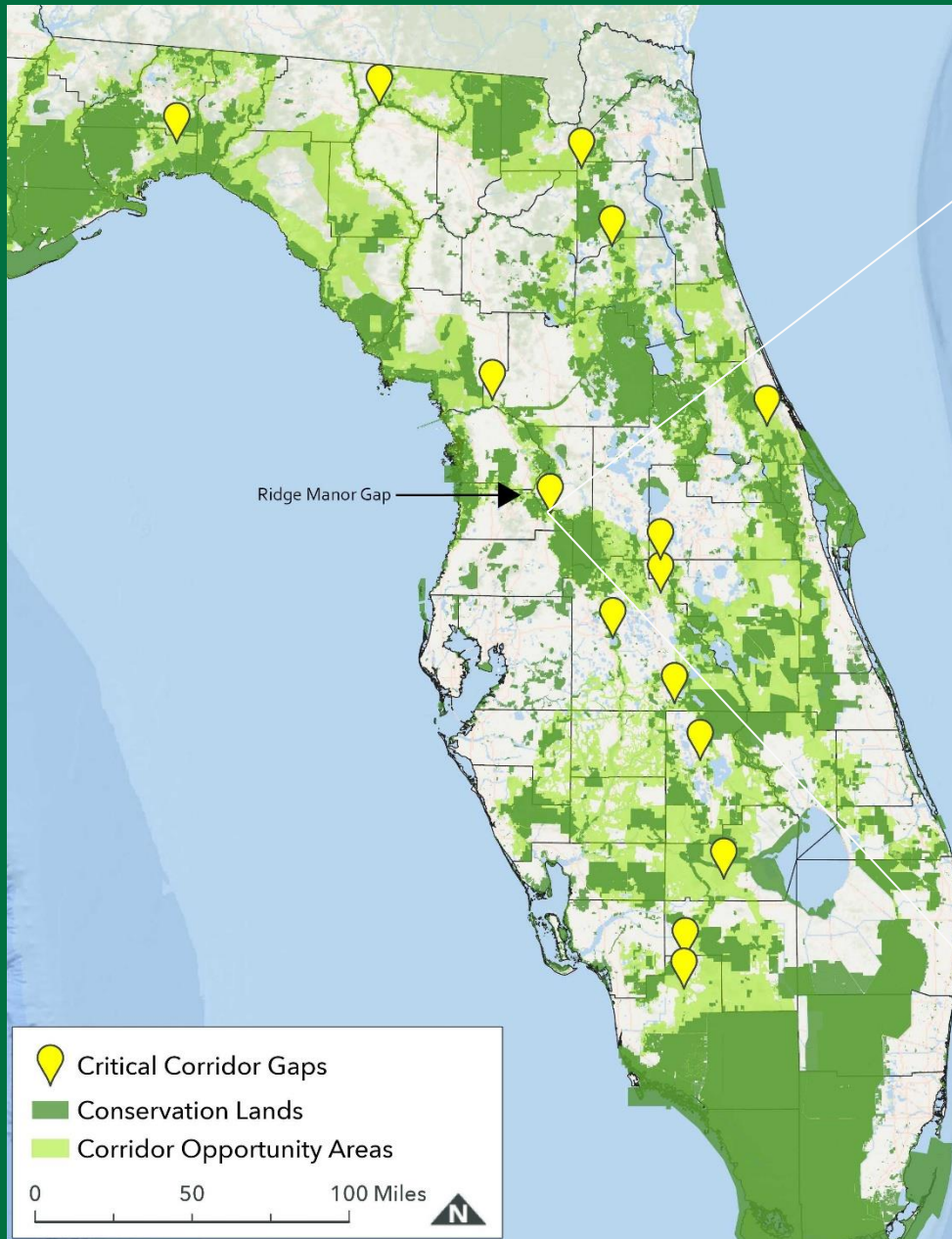
version 3.8 (image service)

Land Cover WMD (FLUCCS)

- Residential, Low Density
- Residential, Medium Density
- Residential, High Density
- Commercial and Services
- Industrial
- Extractive
- Institutional
- Recreational
- Urban Open Land
- Agricultural
- Agricultural
- Agricultural
- Agricultural
- Agricultural
- Agricultural
- Rangeland
- Rangeland
- Rangeland
- Rangeland
- Upland Forests
- Upland Forests
- Upland Forests
- Upland Forests
- Waterbodies
- Waterbodies
- Waterbodies
- Waterbodies
- Waterbodies
- Waterbodies



Highly Parcelized Gaps



Critical Linkage: Ridge Manor Gap

- Irreplaceable connection between State Forest tracts, Green Swamp to east, and coastal conserved lands to west



Conservation of Highly Parcelized Critical Gaps Project

- Partnership between Putnam Land Conservancy (PLC) and Florida Wildlife Corridor Foundation
- Goal: develop acquisition strategies to close highly parcelized, critical Corridor gaps
- Pilot project sites: Etoniah-Belmore Gap (Putnam County) and Ridge Manor Gap (Hernando County)



Diversifying Income Streams for Landowners

What Are Payments for Ecosystem Services (PES)?

Voluntary programs where **private landowners** receive a **financial incentive** to conduct specified activities on their lands to provide **ecosystem services**, e.g., habitat connectivity, aquifer recharge, and others

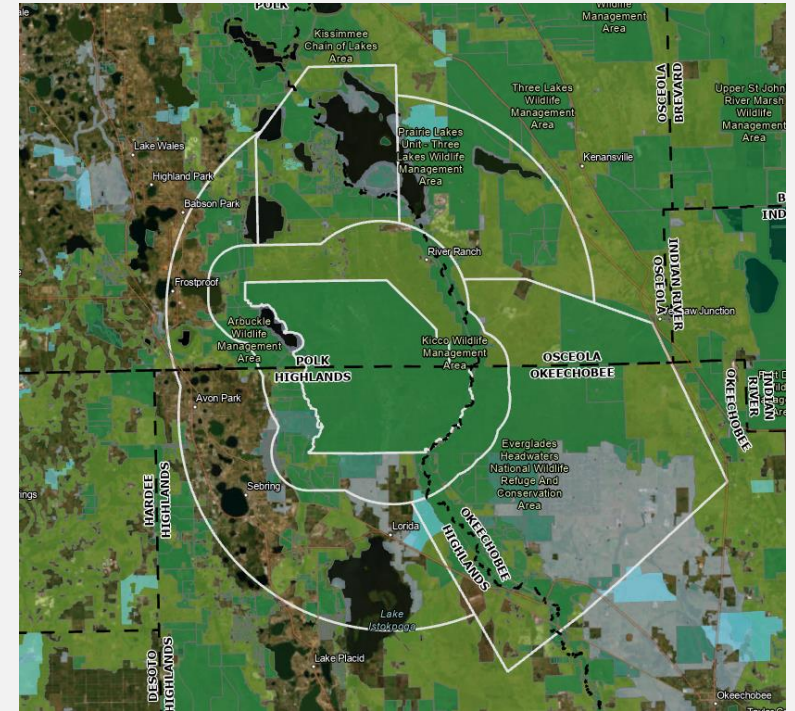
Florida Wildlife Corridor PES: Objectives

Maintain connectivity for critical Wildlife Corridor linkages

Pay landowners to continue provision of ecosystem services at high risk of conversion

Increase PES awareness & participation

Another critical conservation tool





Funding Currently Restricted to areas near
Avon Park Air Force Range

[Home](#) [FAQ](#) [Contact](#)

Expansion to New Areas Based On New Funding
Sources

FLORIDA WILDLIFE CORRIDOR PAYMENT FOR ECOSYSTEM SERVICES

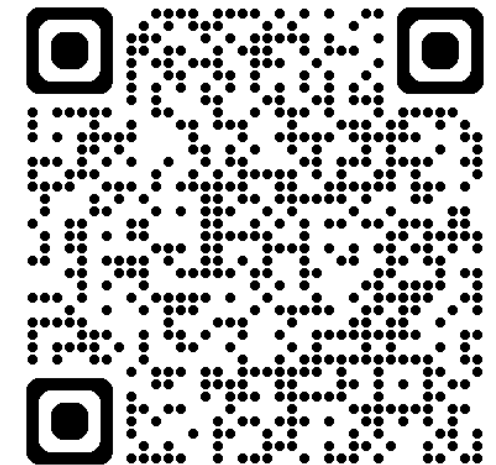
The Florida Wildlife Corridor PES Pilot program is designed to provide financial compensation to landowners to maintain their land in an undeveloped state and provide one or more of three ecosystem services:

Habitat Connectivity

Aquifer Recharge

Water Quality

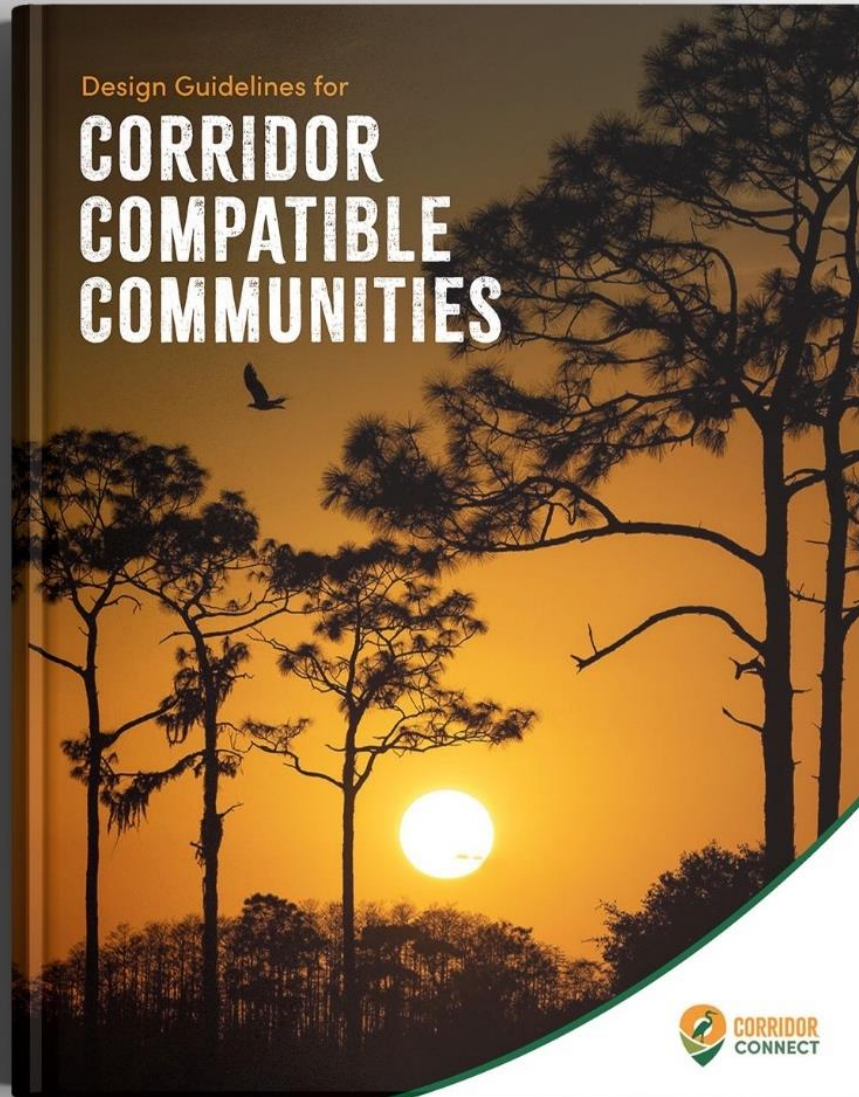
Landowners receive annual payments for the duration of a 5-year contract, subject to compliance and monitoring requirements.



**Encouraging
Corridor Compatible
Communities**

Design Guidelines for

CORRIDOR COMPATIBLE COMMUNITIES





BIODIVERSITY. RESILIENCE. CONNECTION.

The Goal:

**TO SAVE AND PROTECT
BIODIVERSITY, RESILIENCE,
AND CONNECTION.**

The Design Guidelines for Corridor Compatible Communities employs an evidence-based system of Qualities and guidelines focused on biodiversity, resilience, and connection as the three pillars of excellent land development strategies.

Biodiversity

Protect, regenerate and promote biodiversity to ensure the critical natural systems needed for life on earth can flourish.

Resilience

Look to protect and mimic natural systems because they resist damage and recover quickly from climate hazards.

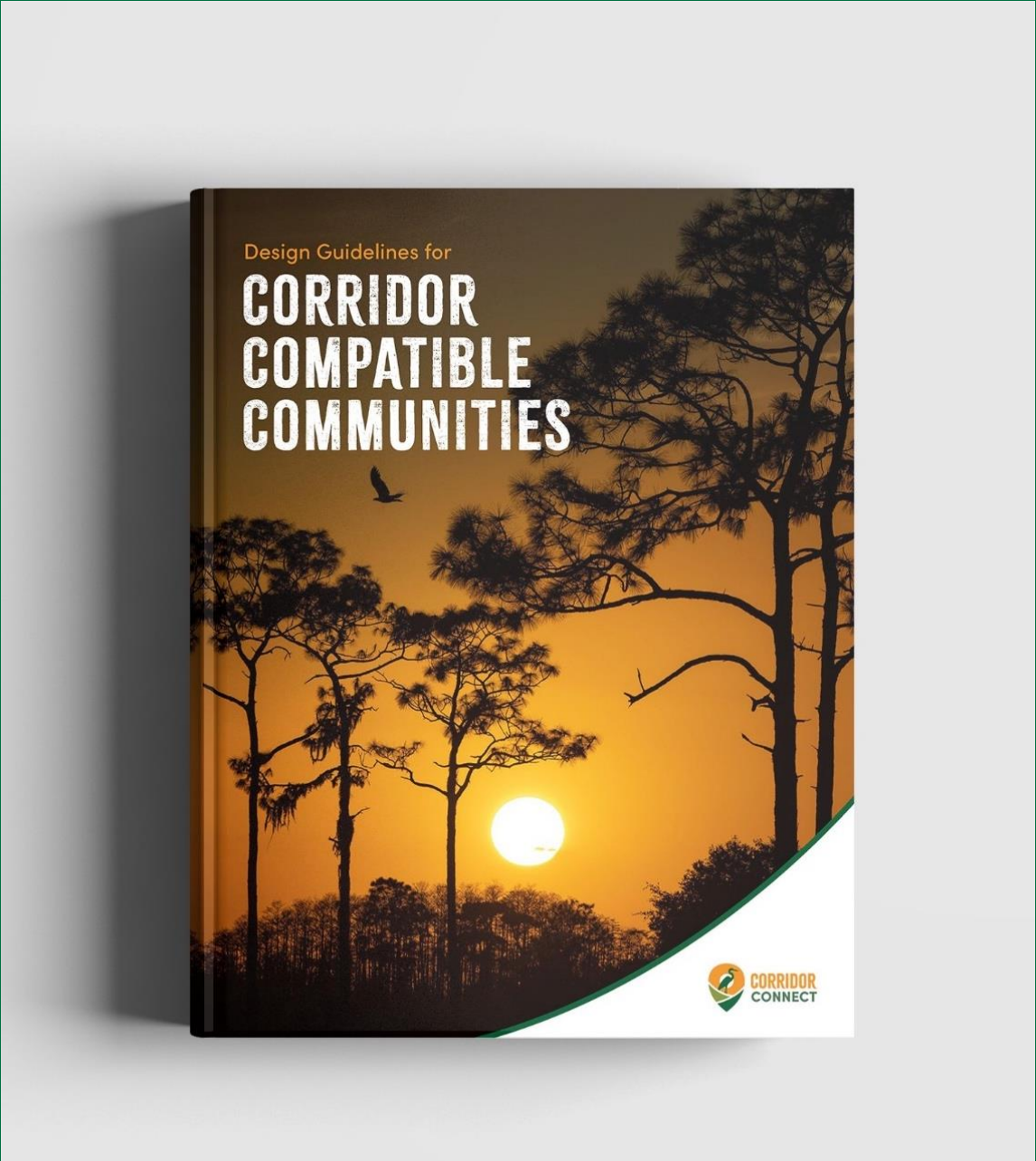
Connection

Place priority on the connectivity and system needs of wildlife and plant species so they may thrive.

Right Design & Right Location

“If we are to safeguard a functional statewide wildlife corridor, while accommodating population growth, planning must address both where it is appropriate to locate new communities within Florida, and how those communities are designed.”

Download the Guidelines!



**Closing Gaps &
Expanding Access
with Trail Partners**



TRAILS

DRAFT 2025 TOOLKIT



1. ECONOMIC

Any trail, long or short, is an economic asset to a community. Long-distance trails not only **attract nearby residents, but also visitors** from outside the community. Studies show that the longer a trail is, the farther people will travel to visit it, the longer they will stay, and the more money they will spend. A day-user will spend four times the amount of a local user, and an overnight visitor will spend twice the amount of a day-user. **In 2022, Florida trails generated \$52.3 billion in annual economic impact, creating 465,853 jobs and contributing \$26.4 billion in wages and salaries.**



2. HEALTH & WELLNESS

Walking in nature has been proven to benefit both mental and physical health. Studies show that **spending time in nature reduces stress, improves mood, and decreases symptoms of anxiety and depression.** Walking outside can help regulate circadian rhythms, boost vitamin D levels, lower blood pressure and heart rate, promote overall cardiovascular health, and enhance cognitive function and creativity. The practice of "forest bathing," popularized in Japan, has been shown to enhance the immune system. Nature walks also **promote physical activity, which aids in weight management and reduces the risk of chronic diseases.**



3. COMMUNITY VALUE

Studies have found that access to green space promotes community relationships, as reflected by **stronger social ties, reduced loneliness, place attachment, greater social cohesion, and improved rates of community trust** in local government. Access to trails **promotes community health** and reduces disparities in access to wellness resources by providing free recreational opportunities. Trails also **add value to homes** and are **one of the top community amenities** sought by home buyers.



4. ALTERNATIVE TRANSPORTATION & PLANNING

Recreational trail corridors provide **enjoyable and safe alternatives to cars.** Strategic trail network planning can help **reduce traffic congestion and improve traffic flow.** Using human-powered transportation instead of cars can also **reduce air pollution and carbon emissions.** Florida's Shared-Use Non-motorized (SUN) Trail Program, established in 2015, receives an annual allocation for the development of a **statewide multi-use trail system** that keeps bicyclists and pedestrians physically separated from vehicular traffic.



5. COMMUNITY & REGIONAL CONNECTIVITY

Regional trails are multi-use trails that connect communities, neighborhoods, parks, and natural areas. **Trail Towns and Gateway Communities play a crucial role in supporting and enhancing the value of these trails.** Local businesses commonly reap the economic impacts of regional trails, which people often travel to use.



6. CONSERVATION

Greenways and trails help protect critical functions performed by our natural environments. Their linear nature **provides corridors** for plants and wildlife to move, helping **increase genetic diversity and survival.** Greenways and trails can **improve water quality and flooding** by creating a natural buffer zone that protects streams, rivers and lakes, preventing soil erosion and filtering pollution. Greenways and trails also provide opportunities for **environmental education.**

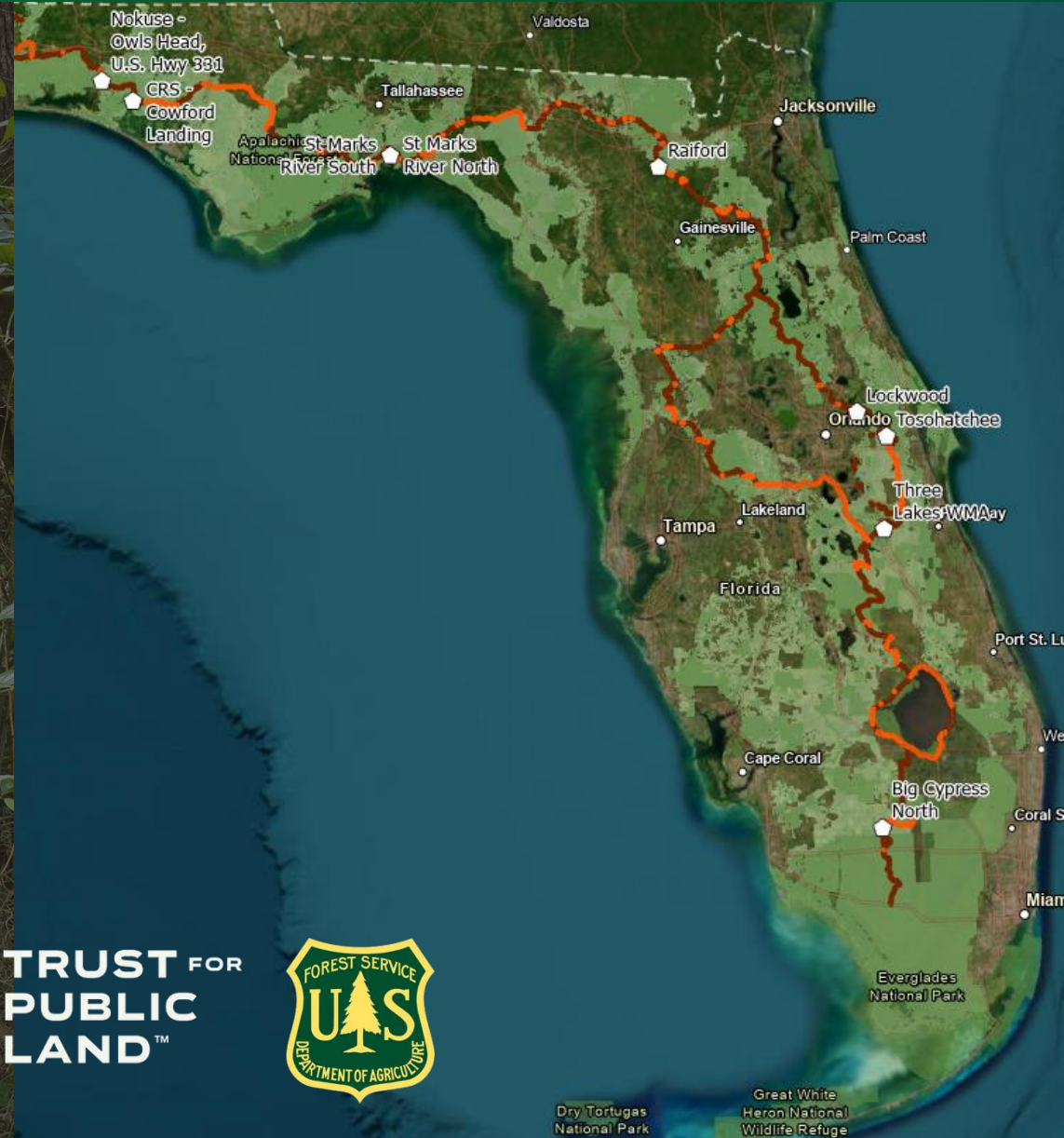


Follow this link
to view our full
TRAILS TOOLKIT!

DISNEY TRAILHEADS GRANT

Pursuing 6 New Trailhead Locations to expand access to Florida Trail

1. Nokuse
2. Cowford Landing
3. St. Marks River North
4. Raiford
5. Lockwood
6. Tosohatchee WMA



Connecting

Stay Connected via Corridor Connect!

COLLABORATE

- Corridor Collaboration Teams
- Mission-Aligned Partners
- Location-Specific

CONVENE

- Corridor Connect Summit
- Corridor Town Hall
- Mission-Aligned Events



COMMUNICATE

- Partner Updates on Platform
- Quarterly Newsletter
- Partner Sourced Resource Page

CHART

- Acres Conserved
- Theory of Change Metrics
- Summit Solutions Progress



FEELING INSPIRED?

CONNECT WITH US!

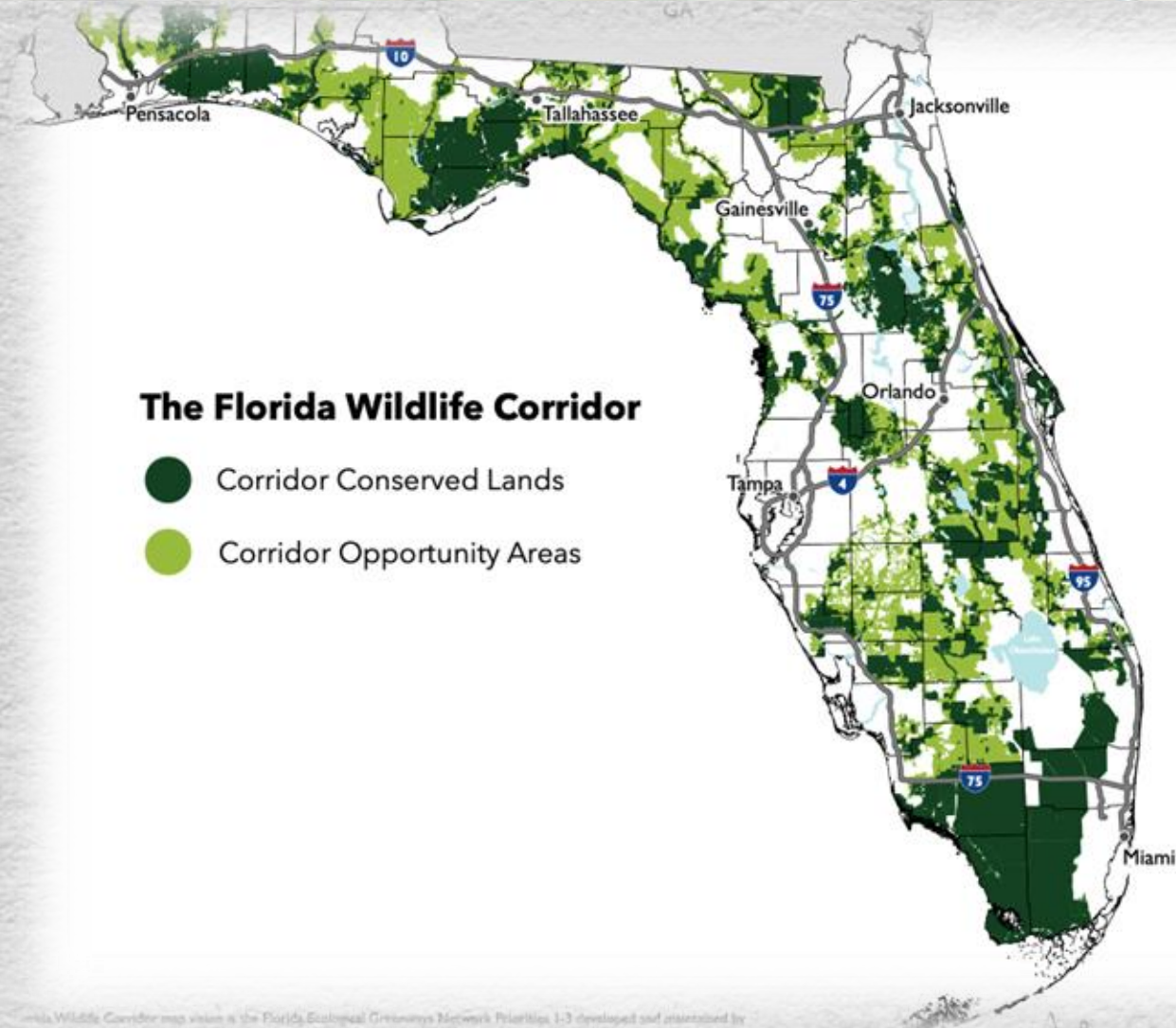
FOLLOW ALONG

-  **@FloridaWildlifeCorridor**
-  **@FloridaWildlifeCorridor**
-  **Florida Wildlife Corridor Foundation**
-  **@FloridaWildlifeCorridor**
-  **floridawildlifecorridor.org**

DONATE



MIND THE GAPS



MIND THE GAPS



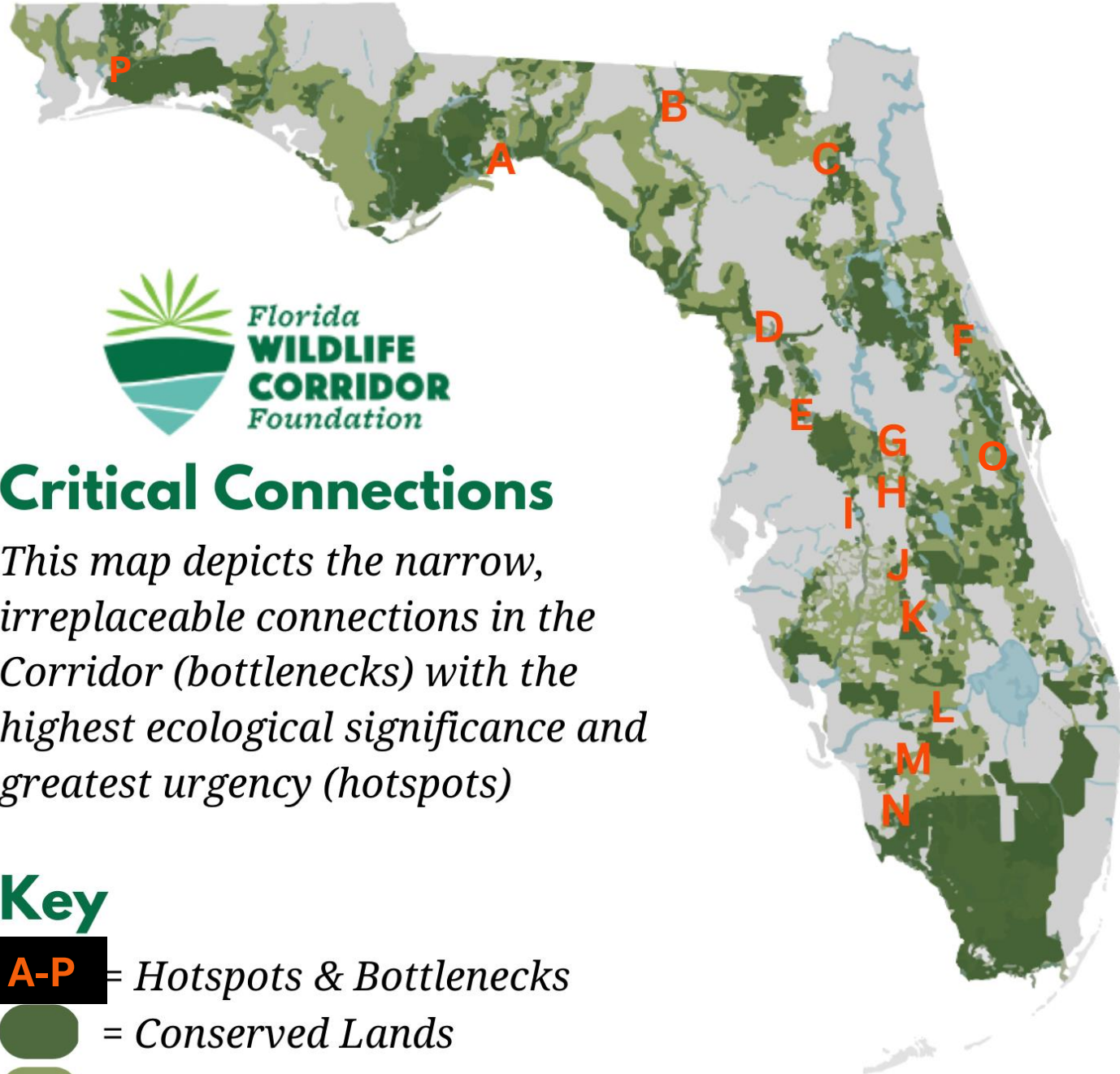
We can protect the Corridor through:

- *Informed Planning*
- *Community Engagement*
- *Growth Management*



Carlton Ward Jr/Wildpath

MIND THE GAPS



Critical Connections

This map depicts the narrow, irreplaceable connections in the Corridor (bottlenecks) with the highest ecological significance and greatest urgency (hotspots)

Key

A-P = Hotspots & Bottlenecks

 = Conserved Lands

 = Opportunity Areas

MIND THE GAPS



DONATE



2026 Legislative Session | Priorities | Toolkit | 2040/2070 Project | Webinars | About Us | 

implemented to guide development patterns that minimize impact to agricultural and natural areas.

Module 1

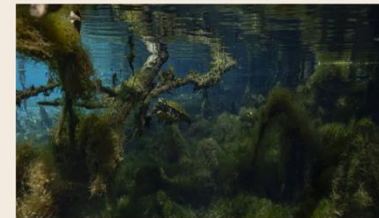
Geared toward elected officials and community stakeholders, this module provides an



overview of the Corridor, presentation about the economic benefits of smart growth as it relates to land conservation, and a panel discussion about the roles of local officials, regional planners and landowners working together toward a common goal.

Module 2

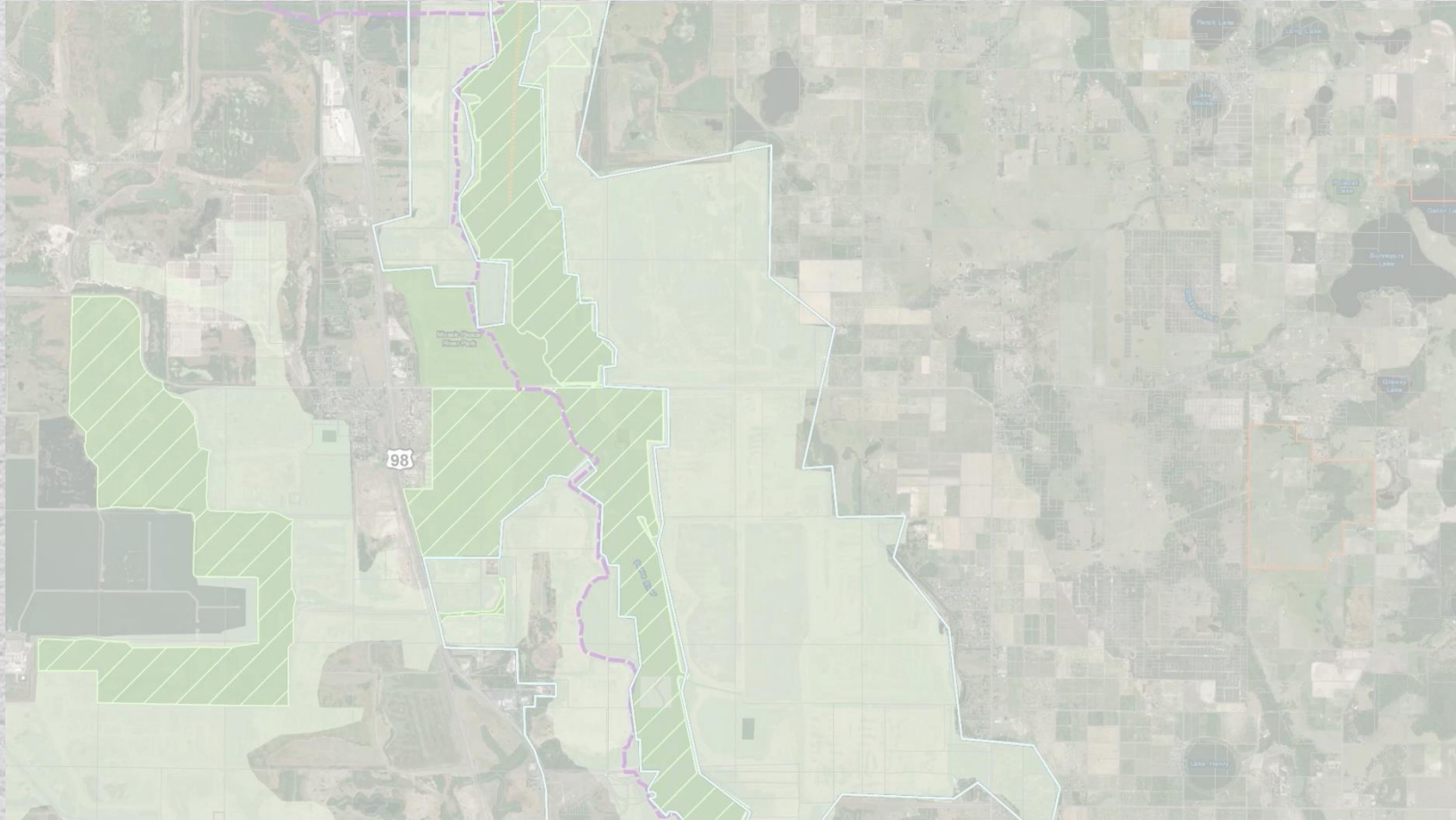
Created for planning practitioners, the module includes demonstration



s of powerful mapping resources, advice on community visioning, and practical policies that can be implemented to guide development patterns that minimize impact to agricultural and natural areas.

<https://1000fof.org/floridawildlifecorridor/>

MIND THE GAPS



<https://1000foc.org/floridawildlifecorridor/>

MIND THE GAPS



DONATE



2026 Legislative Session | Priorities v | Toolkit v | 2040/2070 Project v | Webinars v | About Us v | 

implemented to guide development patterns that minimize impact to agricultural and natural areas.

Module 1

Geared toward elected officials and community stakeholders, this module provides an



overview of the Corridor, presentation about the economic benefits of smart growth as it relates to land conservation, and a panel discussion about the roles of local officials, regional planners and landowners working together toward a common goal.

Created for planning practitioners, the module includes demonstration



s of powerful mapping resources, advice on community visioning, and practical policies that can be implemented to guide development patterns that minimize impact to agricultural and natural areas.

<https://1000fof.org/floridawildlifecorridor/>



LOCAL GOVERNMENTS ARE UNIQUELY QUALIFIED TO :

- UNDERSTAND DEVELOPMENT PATTERNS
- BUILD RELATIONSHIPS WITH LOCAL LANDOWNERS
- IMPLEMENT APPROPRIATE PLANNING TOOLS

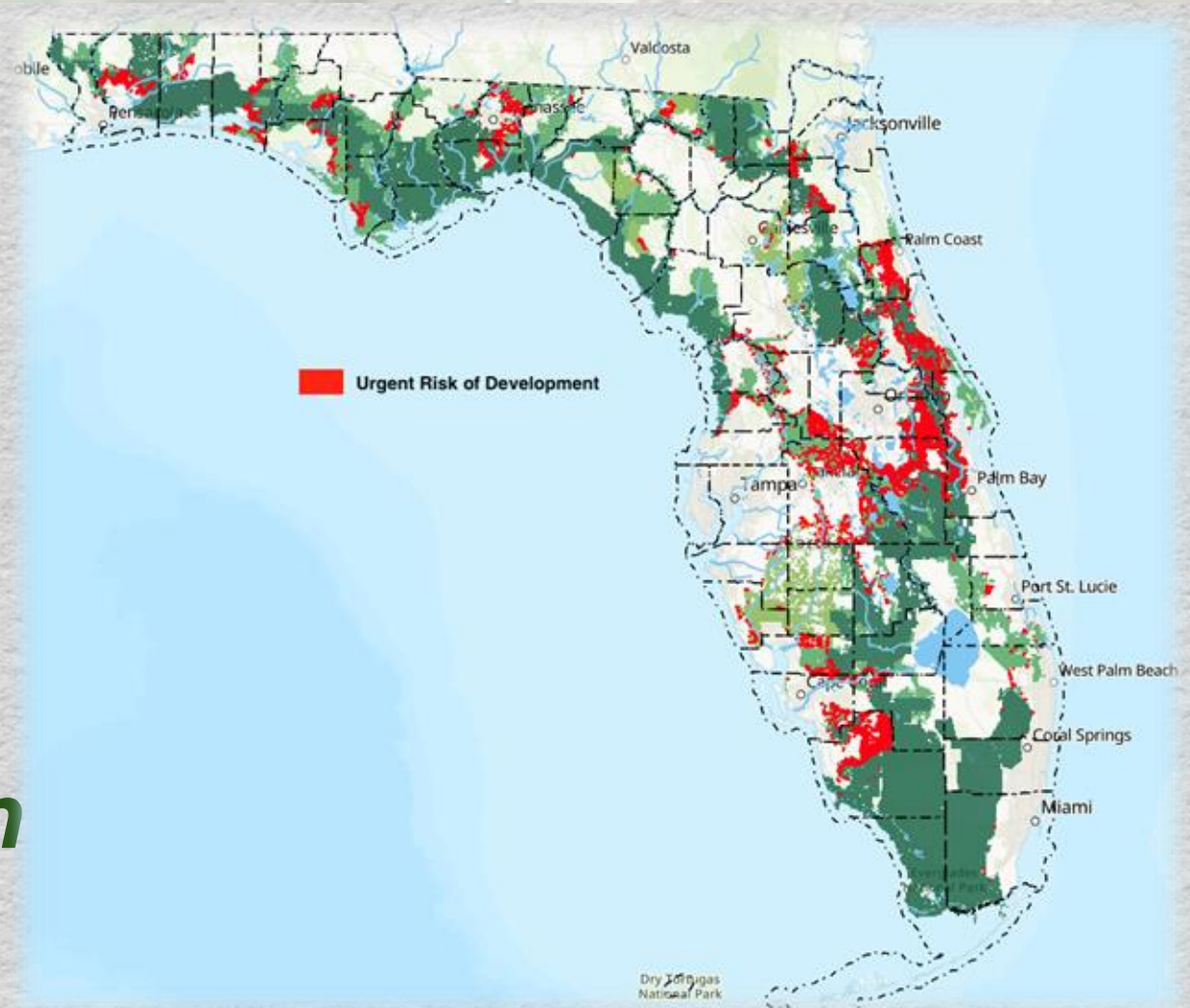
Carlton Ward Jr/Wildpath



MIND THE GAPS

Module 1 Overview:

- *Introduce the Corridor*
- *Economics of Sprawl*
- *Strategies for Local Governments*
- *Stakeholder Discussion*



Adam Carr

ECONOMIC AND COMMUNITY BENEFITS
OF CONSERVATION-ORIENTED PLANNING

URBAN3

Financially Sustainable Communities by Design





Neighborhood Comparison

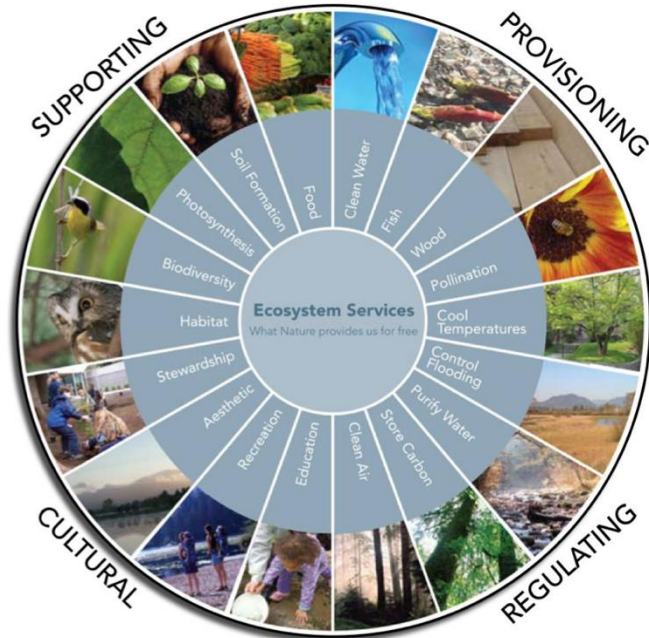
Anywhere, Florida

Adam Carr

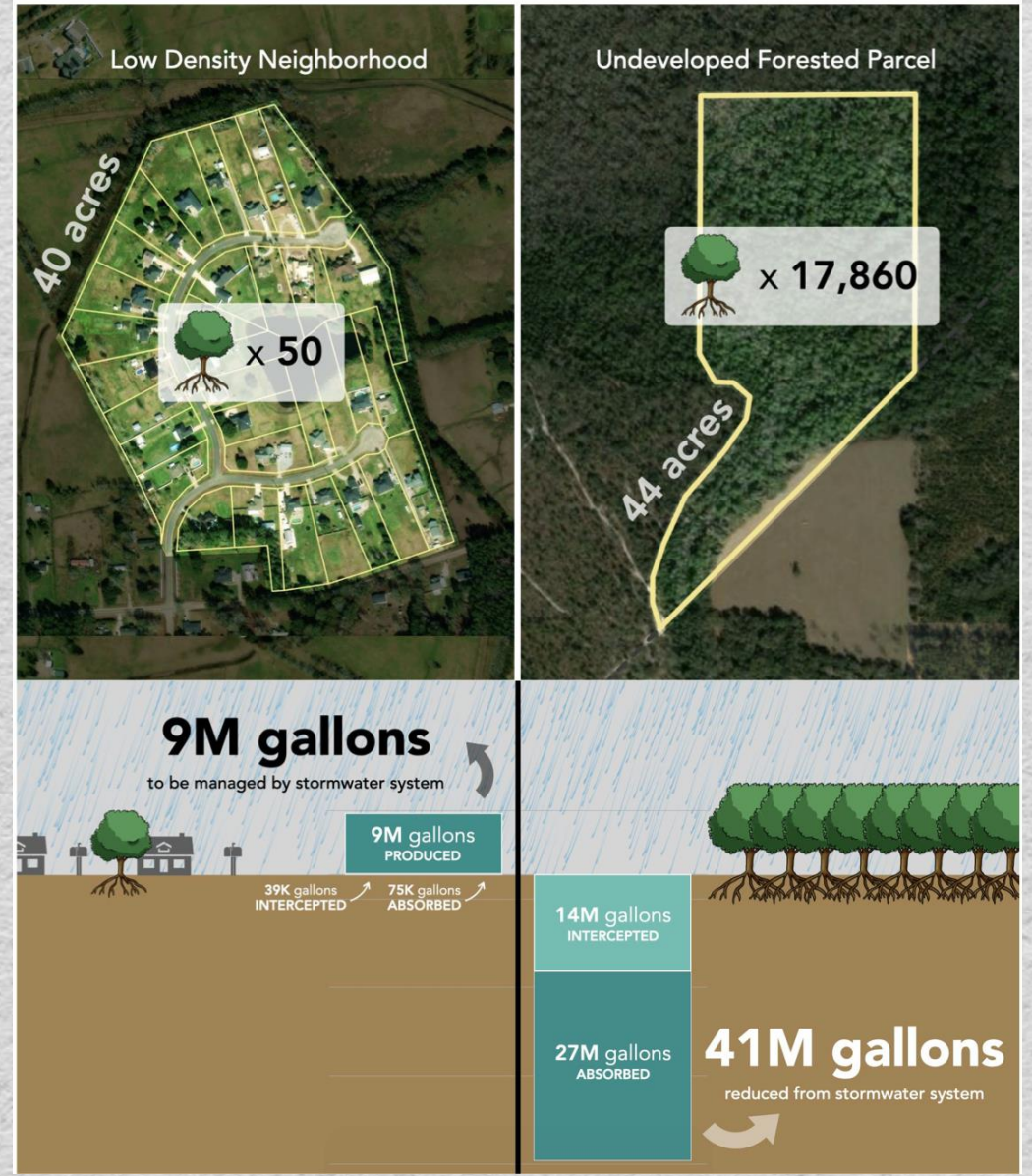


The Value of Ecosystem Services

Ecosystem Services:
“What Nature provides us for free”



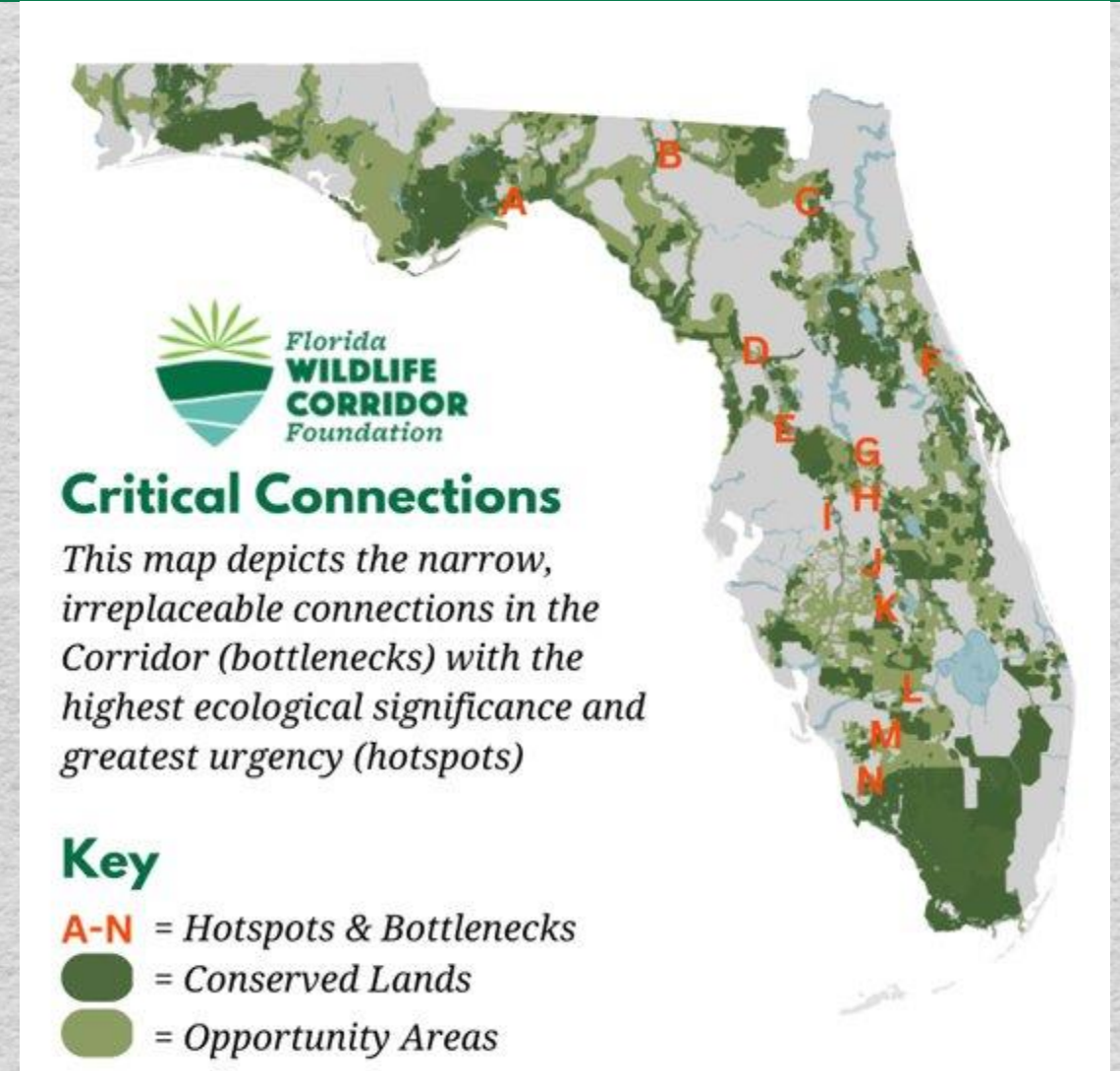
Comparison: Impact of Trees



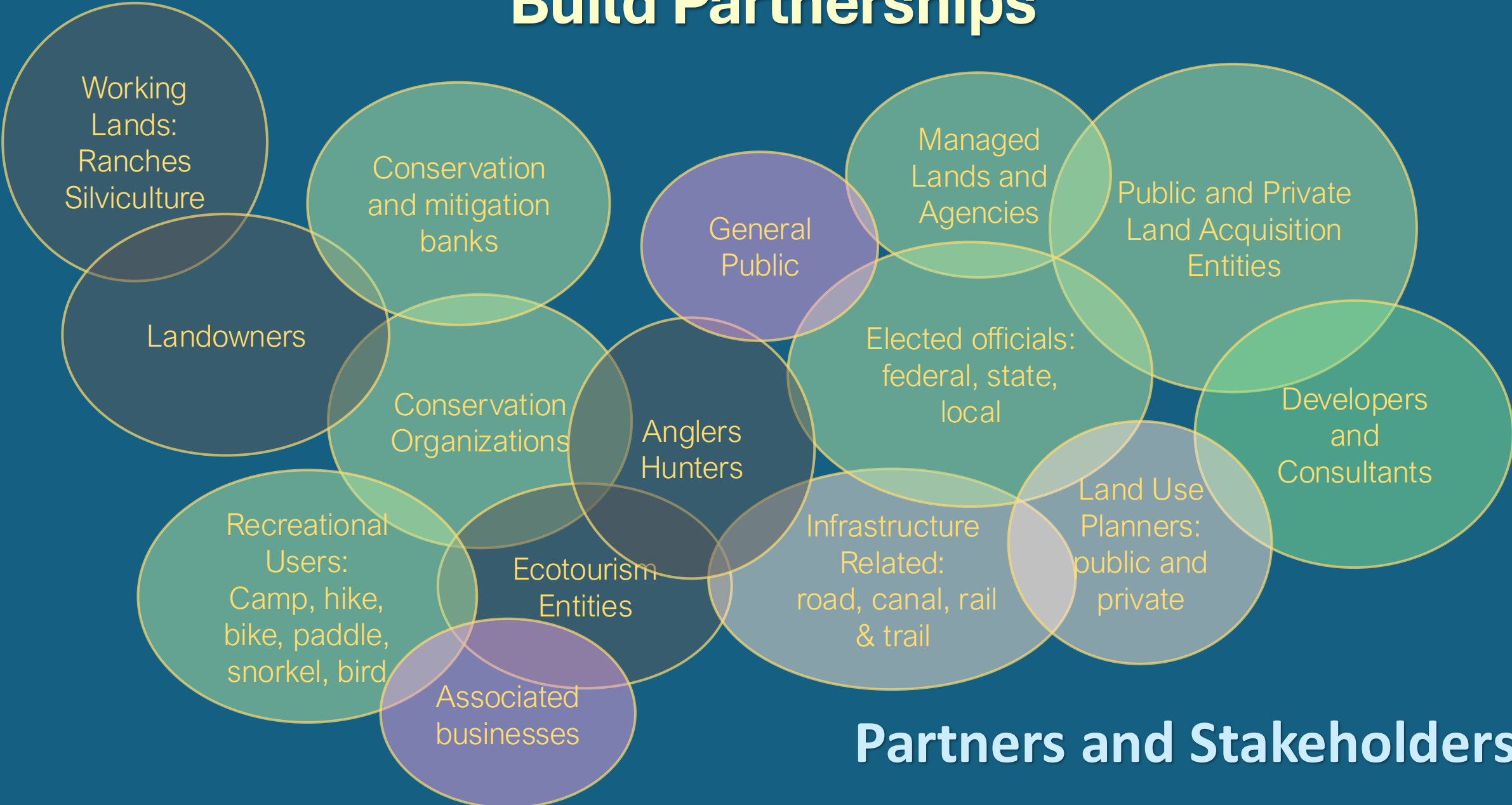
Local Strategies: What Can Local Governments Do?

Looking through the “*could do*” to find the “*will do*”!

- Identify Properties in Your Jurisdiction
- Leverage Existing Resources
- Conduct Outreach to Landowners
- Host Workshops
- Update Planning Documents
- Build Partnerships



Build Partnerships



Partners and Stakeholders

MIND THE GAPS



Tara McCue



Sean Parks



Ben (and Luanne) Williams

MIND THE GAPS

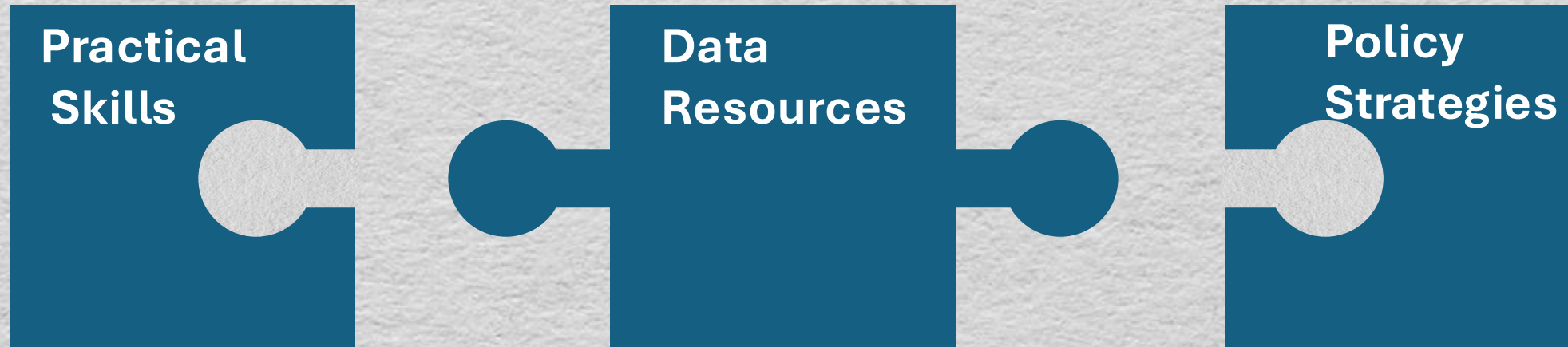
Module 2 Overview:

- *Mapping Tools*
- *Policy Tools*
 - *Comprehensive Plans*
 - *Land Development Regulations*
- *Community Visioning*



MIND THE GAPS

Module 2 Objectives:





MIND THE GAPS

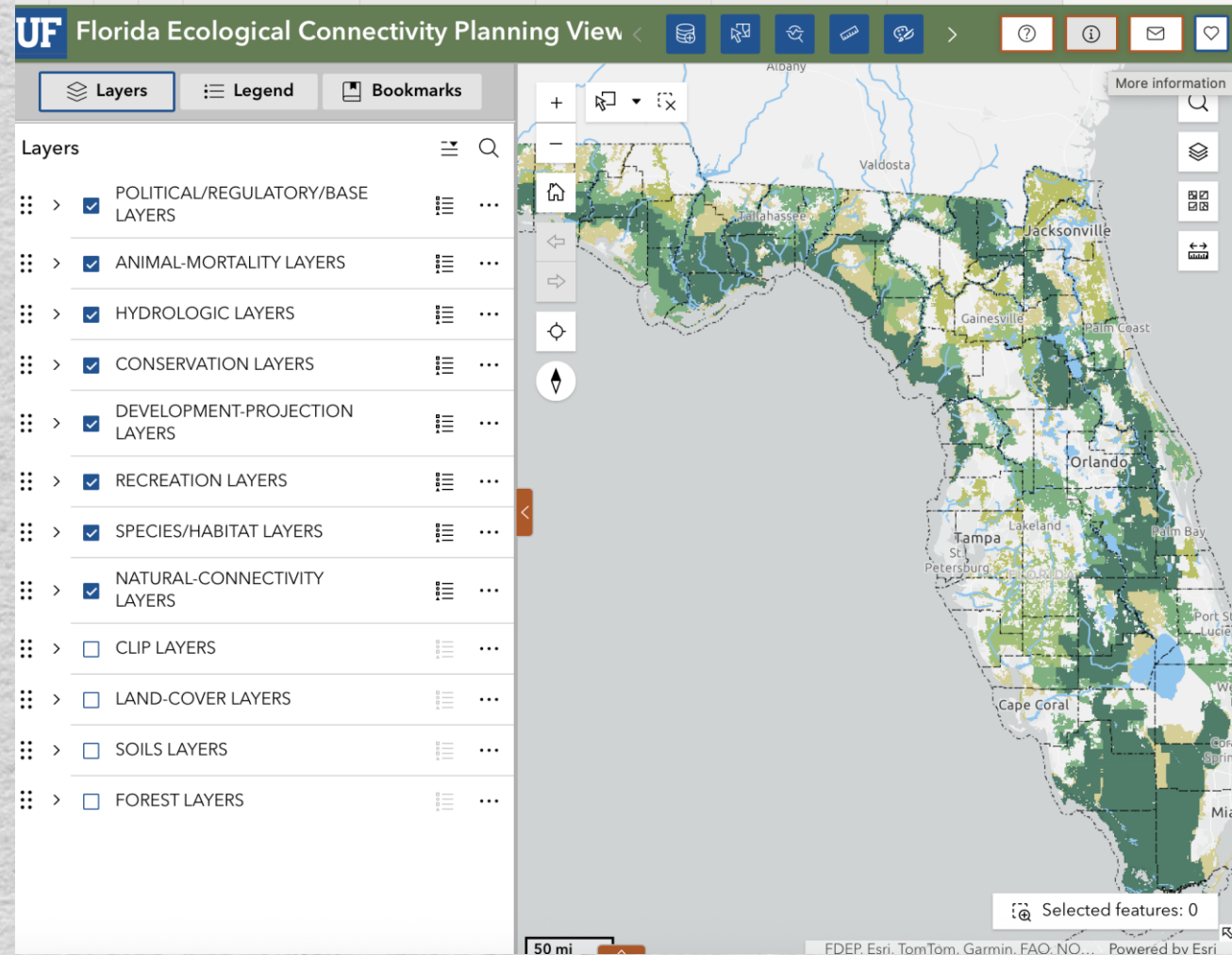
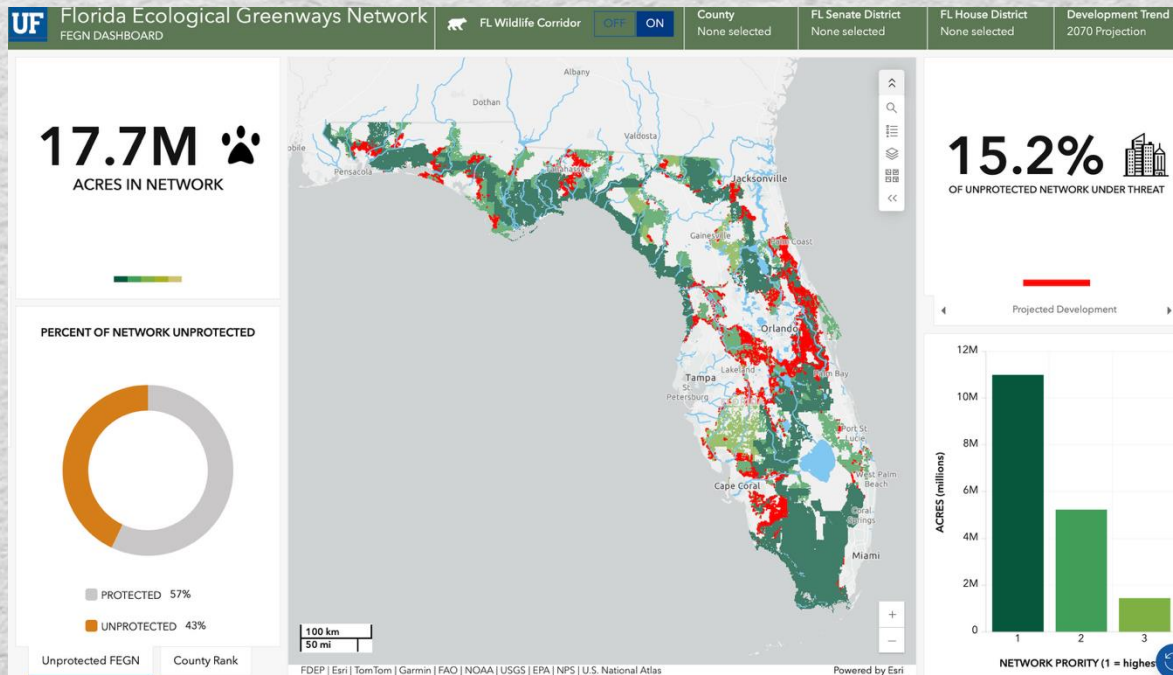
Strengthen Habitat
Connectivity



Protect
Biodiversity

✦ Enhance Community Resilience

UF Florida Ecological Greenways Network- ECO Hub



The HUB: a central place to learn about tools, data and other online resources

The UF Center for Landscape Conservation Hub is a central source for online tools, their tutorials and other data the center provides.

[Visit the HUB](#)

FDOT Efficient Transportation Decision-Making (ETDM) Environmental Screening Tool

ETDM EST Environmental Screening Tool
Map Viewer Help

Map Loader

Resource Data

Search Layers

ETDM Projects

Project ID

Enter a project number to view all analysis areas for that project. To view just a specific analysis area, enter as project-analysis area ID, e.g. "1234-1".

Layers

- Wildlife Crossing Consideration
 - FDOT Wildlife Crossings
 - EXISTING
 - UNDER CONSTRUCTION
 - PLANNED - FUNDED
 - FDOT Panther Crossing Sign Locations
 - FWC Bear Crossing Sign Locations
 - FWC Bear Fencing Opportunities
 - Crossing Opportunities at Large

Map interface showing Florida with various markers (green triangles for existing, orange triangles for under construction, blue triangles for planned) and road networks. Includes a search bar, zoom controls, and a scale bar (100km/60mi). Coordinates: 1-4 622 324 26°26'51 976" N 87°30'42 64" W. Powered by Esri, TomTom, FAO, NOAA, USGS.

The Florida Circuit Model

How to read the model



High flow potential

Low flow potential

Intact habitat



Diffuse



Potentially developed, degraded

Local corridors



Intensified



Remnant connectors



Channelized

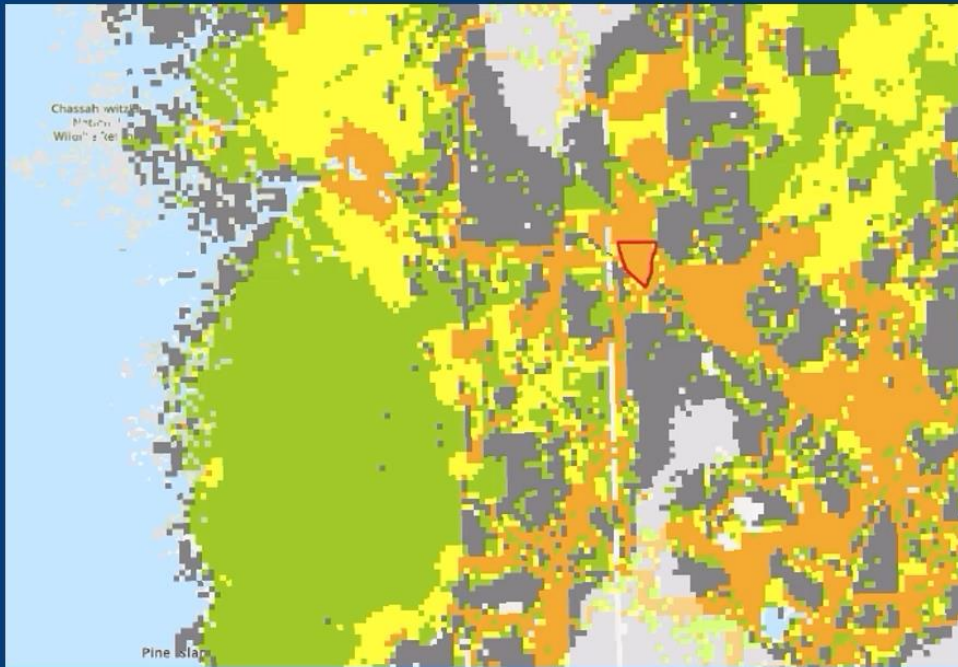


Impeded

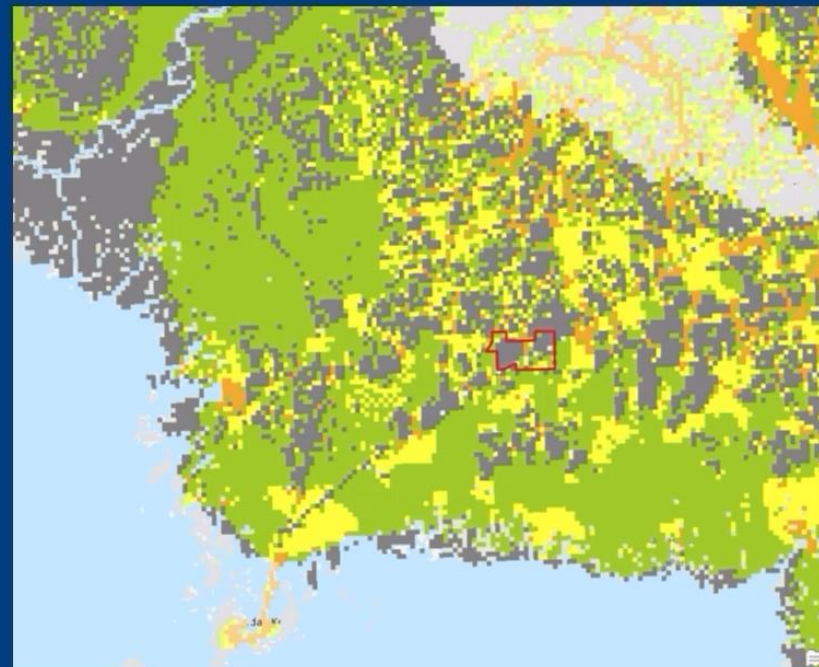


The Florida Circuit Model

How it's being used



**324 acres of
Withlacoochee SF**



**861 acres timber in
Levy County**

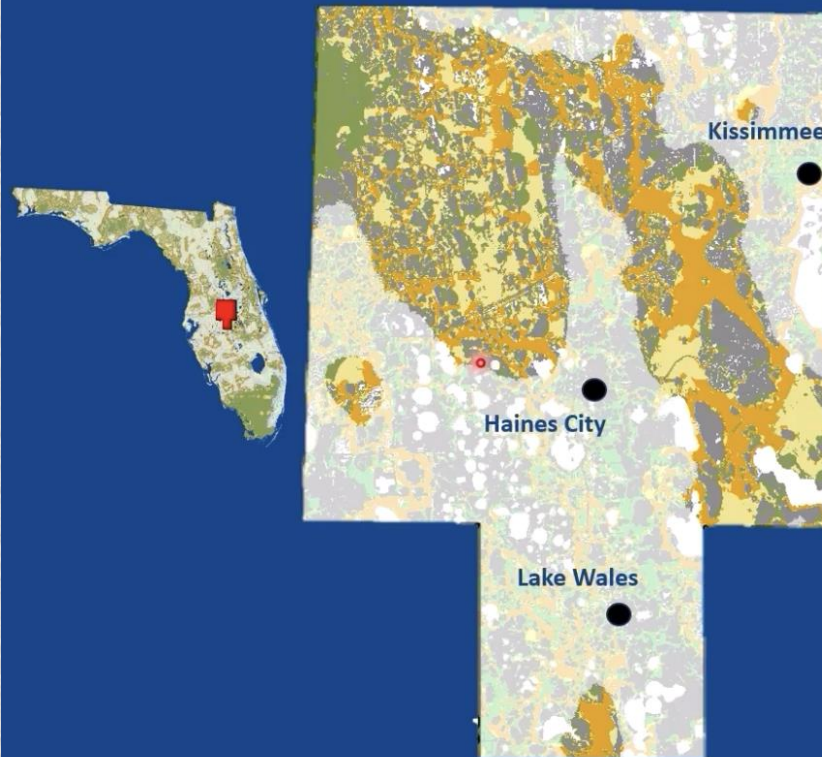










Archbold



The Florida Circuit Model

How to read the model (locally)



	High flow potential		Low flow potential	
Intact habitat		<i>Diffuse</i>		Potentially developed, degraded
Local corridors		<i>Intensified</i>		Remnant connectors
		<i>Channelized</i>		
		<i>Impeded</i>		



Planning Tools

Planning Tools to Protect the Florida Wildlife Corridor

Rural Boundaries/Agricultural Overlays

These zoning tools protect and promote farming activities within a designated area, often layered over existing zoning regulations. They establish additional standards or incentives that prioritize agricultural uses, such as limiting non-farm development, preserving prime farmland, or supporting agritourism and local food production. By guiding land use in favor of long-term agricultural viability, agricultural overlays help prevent urban sprawl, maintain rural character, and support local economies dependent on farming.

Rural Land Stewardship/Transferable Development Rights

Transferable Development Rights (TDR) programs allow property owners in designated "sending areas" (typically zones with environmental, historical, or agricultural value) to sell development rights to developers in "receiving areas" where higher-density development is encouraged. This market-based mechanism helps preserve open space, farmland, and other valued land uses by shifting development potential away from protected areas and toward urban or suburban zones better equipped for growth.

Land Acquisition Programs

Local land acquisition programs are initiatives to purchase land or development rights. They are typically funded through local bonds, sales taxes, grants, or dedicated revenue streams and aim to protect natural resources, prevent sprawl, and enhance community quality of life. By securing key parcels—such as wetlands, forests, riparian corridors, or farmland—local governments can ensure long-term ecological health, provide public access to green spaces, and support planning goals aligned with environmental stewardship.

Corridor Adjacent Buffer Requirements

Natural landscape buffers between developed areas and natural environments, reduce negative impacts from urbanization while enhancing the aesthetic and environmental value of both natural and built environments. They can play a critical role in filtering pollutants from stormwater runoff, reducing noise and light pollution, and providing habitat and travel corridors for wildlife. They also help stabilize soil, prevent erosion, and maintain the ecological integrity of adjacent parcels.

Conservation Subdivisions

Conservation subdivisions preserve natural areas by clustering development on a portion of the land, typically 50% or less, instead of spreading homes evenly across a site. The remaining area is permanently protected as open space, wildlife habitat, farmland, or recreational land. These developments are best suited along the "urban fringe." They minimize habitat fragmentation, reduce impervious surfaces, and maintain the rural character and ecological function of the landscape, often with the support of conservation easements or land trusts.

Wildlife Crossings and Underpasses

Wildlife underpasses are built beneath roads, highways, or railways to provide safe crossing routes for animals, reducing the risk of vehicle collisions and allowing for uninterrupted movement between habitats. When paired with fencing that guides animals toward the underpasses, they become effective tools for mitigating habitat fragmentation, promoting genetic diversity, and supporting overall ecosystem health. Though typically associated with state projects, opportunities exist for local roadways.

Parks and Trails Design Standards

When carefully planned with natural vegetation buffers, limited lighting, and minimal barriers, parks and trails can facilitate safe movement for animals between parks, forests, wetlands, and other natural areas. By avoiding high-traffic roads and incorporating wildlife-friendly features—such as underpasses, overpasses, or signage to limit human disturbance—trails can enhance landscape connectivity and reduce habitat fragmentation.

Low Impact Development

Low Impact Development (LID) aims to mimic natural hydrological processes to reduce environmental impacts of development. It emphasizes techniques such as native vegetation, permeable pavements, rain gardens, green roofs, and bioswales to manage runoff close to its source, promoting infiltration, evapotranspiration, and reuse of rainwater. LID helps protect water quality, reduce flooding, and maintain the ecological integrity of urban and suburban areas by integrating sustainable design into development projects.



Smart Growth



Vibrant Communities



Resilient Economy

Community Visioning



prepared by
DOVER, KOHL & PARTNERS
town planning

for
1000 FRIENDS of FLORIDA

with support from
UF CENTER FOR LANDSCAPE CONSERVATION PLANNING

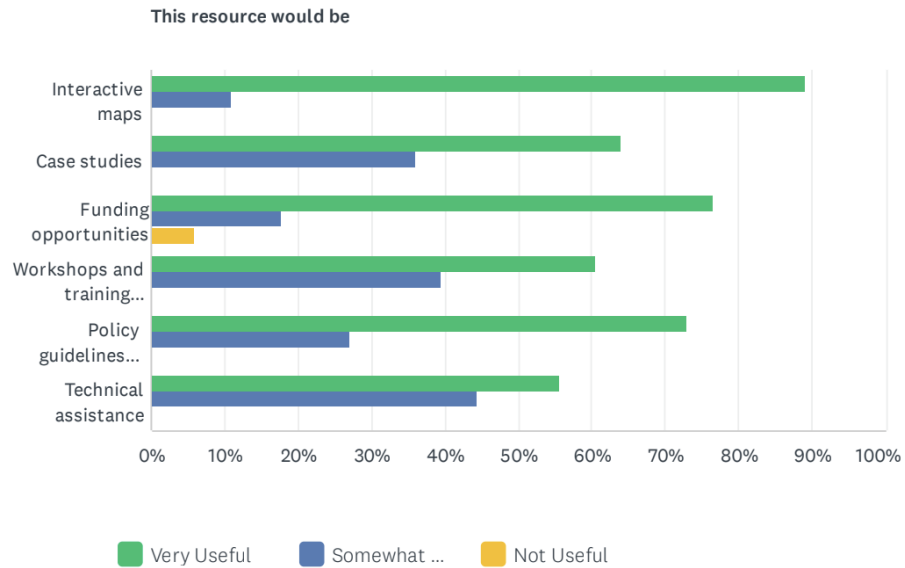
How visioning supports the Corridor

Challenge	Corridor Solution	Planning Strategy
Sprawl	Connected habitat	Conservation overlays
Conflicting interests	Community buy-in	Charrettes + public input
Loss of farmland	Growth boundaries	Rural zoning + incentives

USER SURVEY

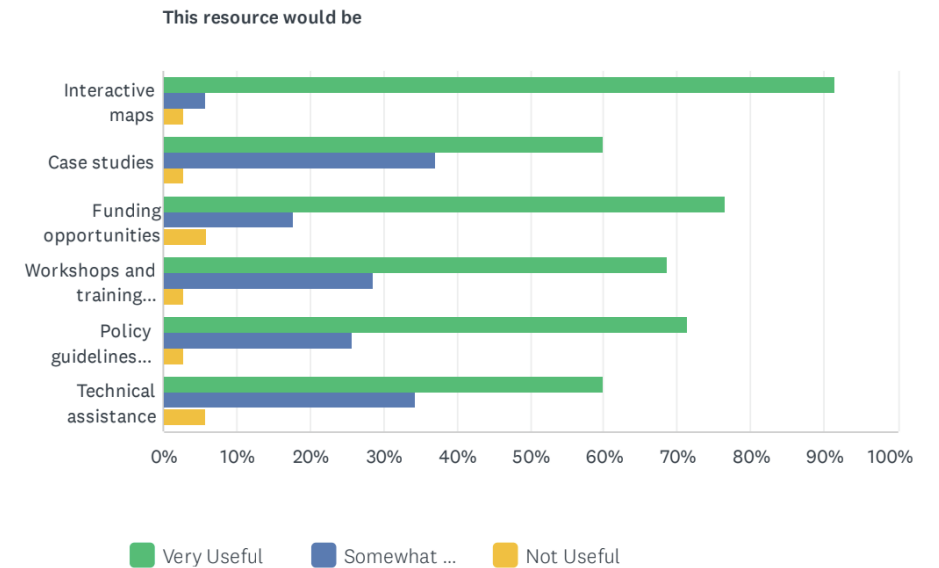
Q6 Please indicate how useful each of the resources below would be for promoting smart growth in your area.

Answered: 38 Skipped: 0



Q7 Please indicate how useful each of the resources below would be for promoting land conservation in your area?

Answered: 36 Skipped: 2



MIND THE GAPS



<https://1000fof.org/floridawildlifecorridor/onlinecurriculum/>
Kim Dinkins: kdinkins@1000fof.org

Tall Timbers Research Station and Land Conservancy

Research Station

Since 1958

Wildlife Research



Land Trust

Since 1991



Conservation easements on natural habitats and working forests



Working with Private landowners



TALL TIMBERS



Prescribed Fire Research



Protecting wetlands and water resources

BIG BEND CONSERVATION LANDS AND THE WILDLIFE CORRIDOR

TOTAL CONSERVATION:

- 1,453,886 acres
- 30% Conserved

Public Lands

- Federal: 659,930 acres
- State: 659,692 acres

Conservation Easements

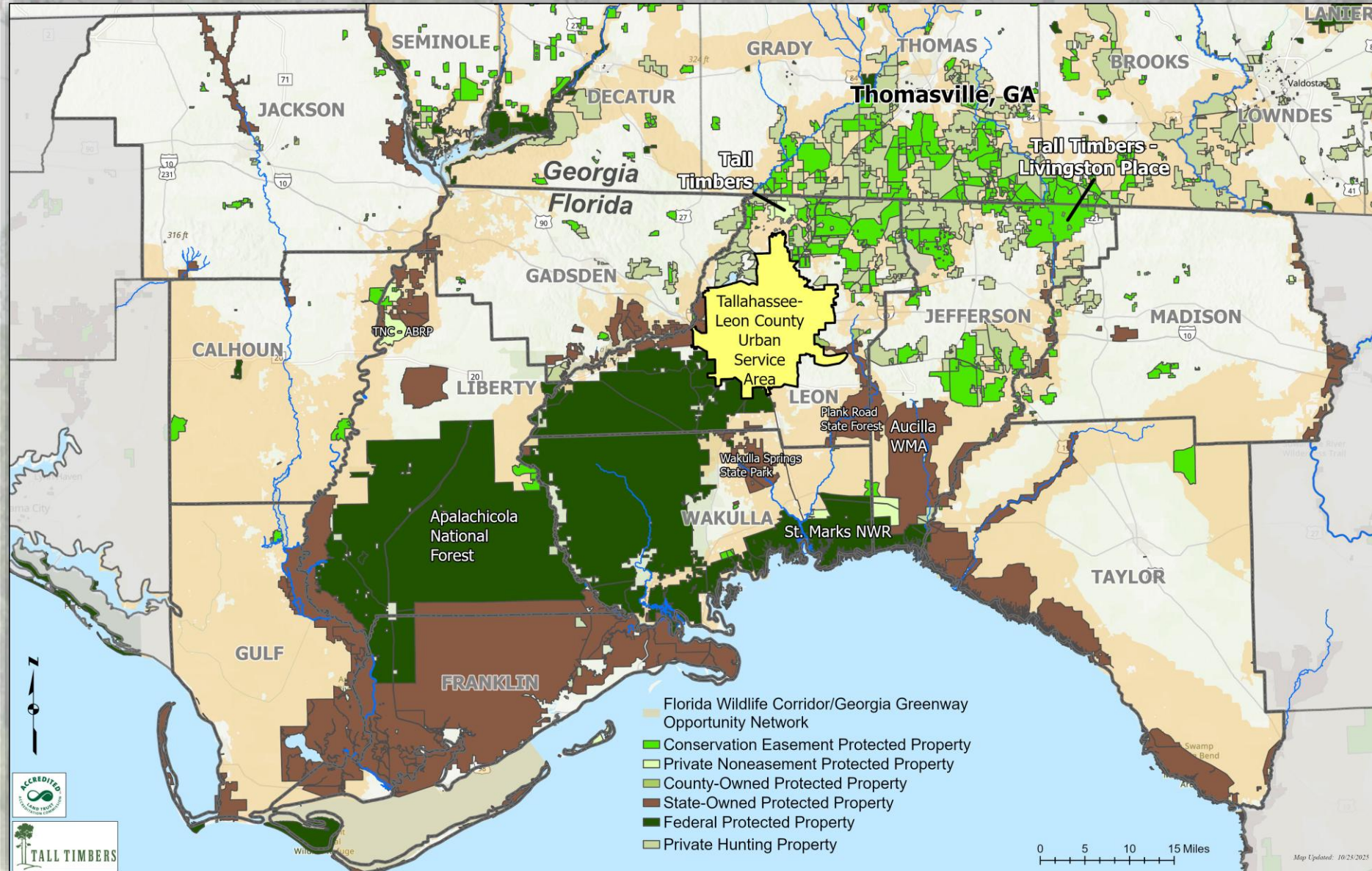
- 109,685 acres

Other Conservation lands

- 24,579 acres

Historic Red Hills Private Lands

- About 430,000 acres



Tall Timbers and the Florida Wildlife Corridor Foundation

Strategic Conservation Connections from the Big Bend to the Gulf

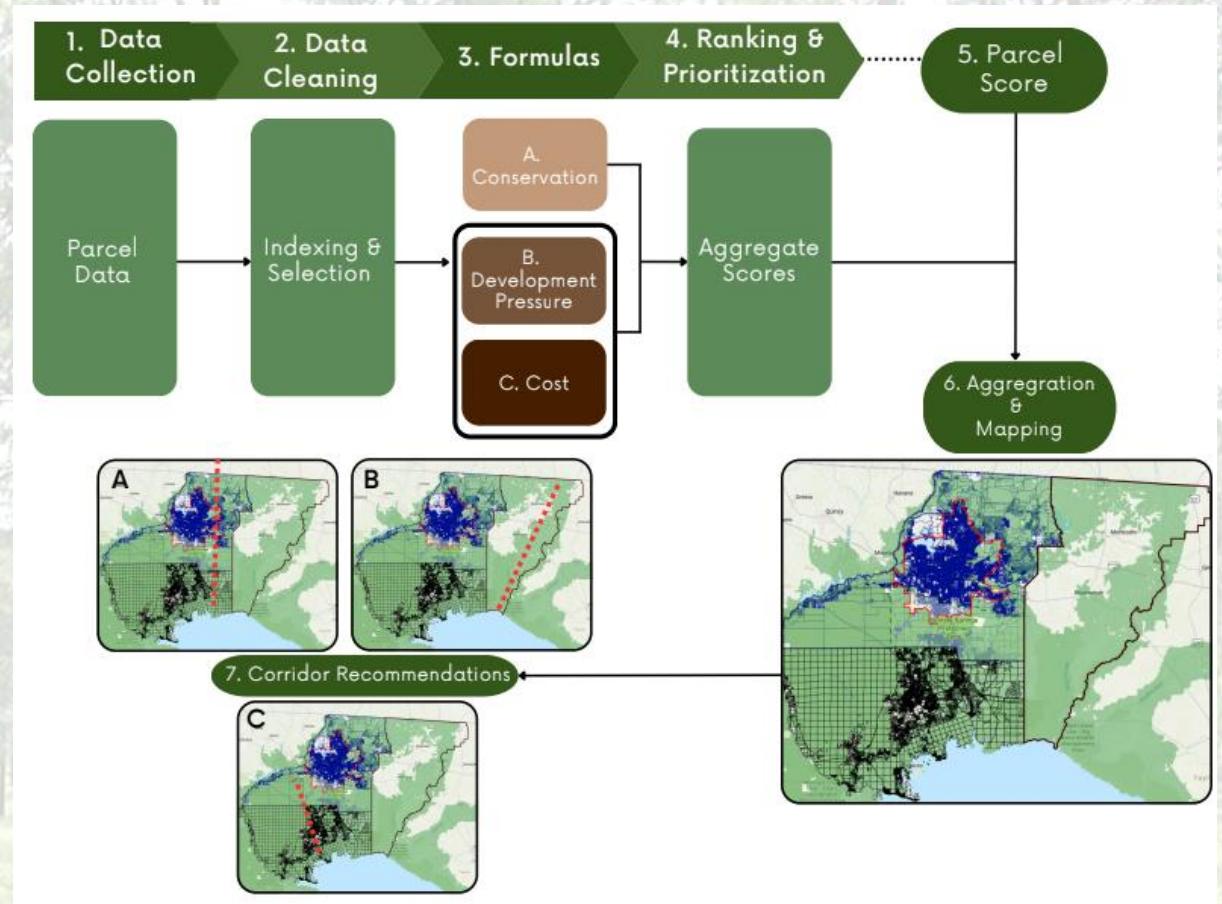
GOAL: develop novel development pressure model to pair with TT's existing Ecological Value model.

Identify critical Wildlife Corridor connections at the PARCEL level.

Work with FSU DURP to pilot methodology.

Create a comprehensive outreach and education campaign.

Make introductions, educate landowners about their role in the corridor, and connect them to resources.



Tall Timbers Conservation Prioritization Tool

Developed UPLAND and WETLAND models

- UPLAND – Focused on prescribed fire
- WETLAND – Focused on water resources and wetland specific species



Frequently burned upland pines,
an UPLAND priority



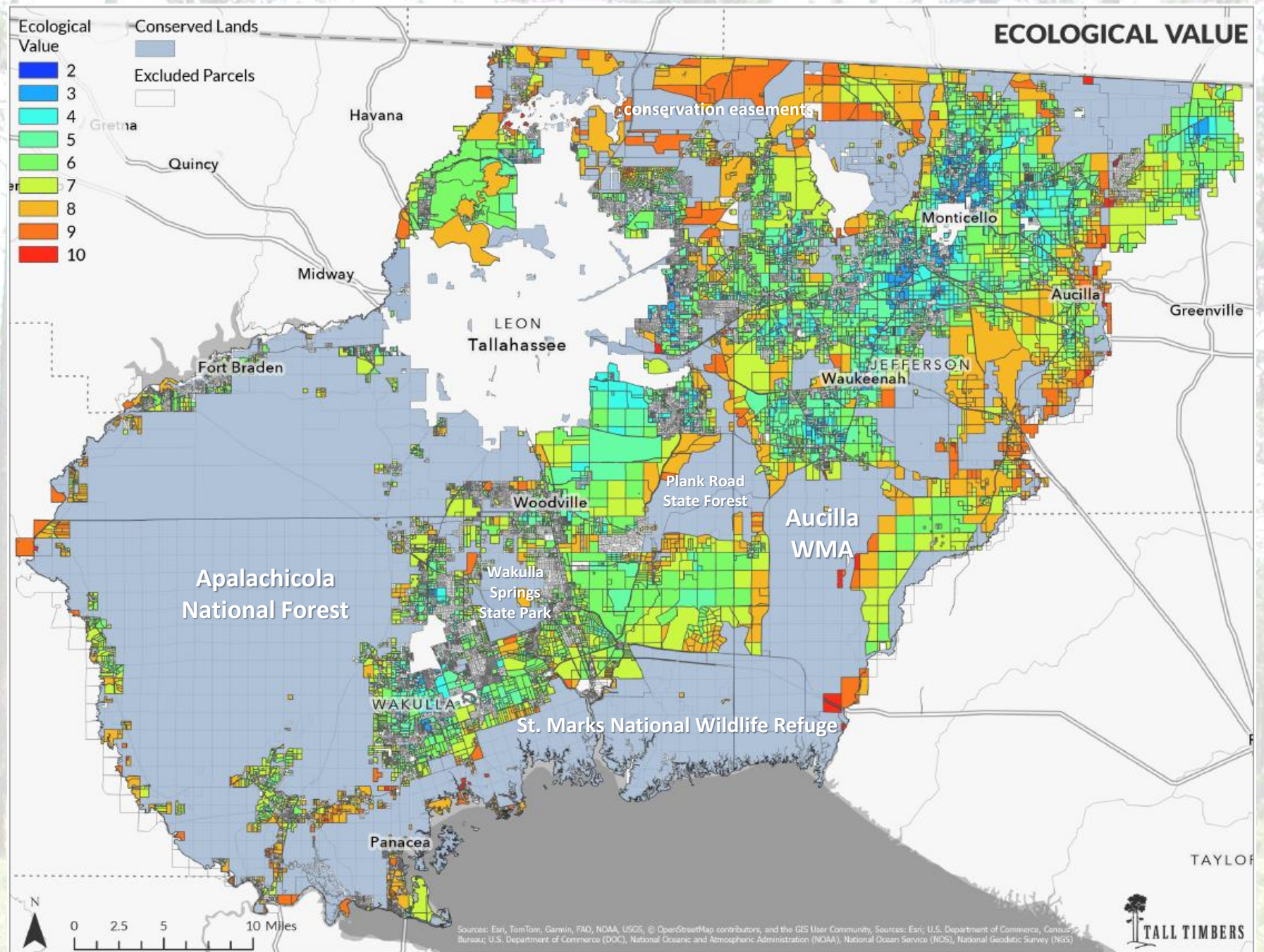
Intact habitats AND close proximity to
existing Conservation, a WETLAND priority

CONSERVATION- ECOLOGICAL VALUE

- 3 County Example - Leon, Jefferson, & Wakulla
- Conservation Priority score for each tax parcel

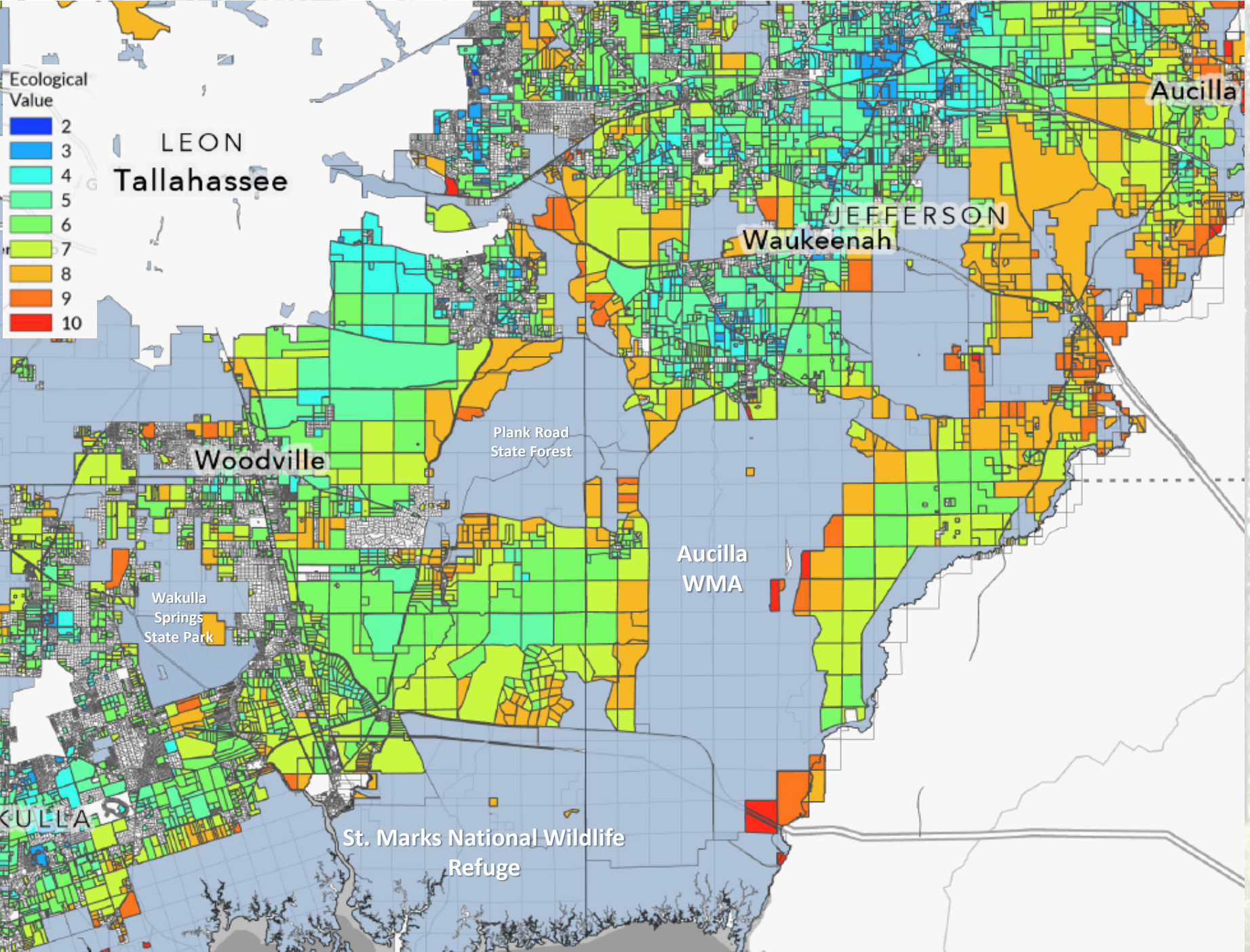
PURPLE/BLUE = LOW
Conservation value

RED/ORANGE = HIGH
Conservation value



CONSERVATION- ECOLOGICAL VALUE

- 3 County Example - Leon, Jefferson, & Wakulla
- Conservation Priority score for each tax parcel
- **PURPLE/BLUE = LOW** Conservation value
- **RED/ORANGE = HIGH** Conservation value



Tall Timbers' development pressure model

Development Pressure Index quantifies a parcel's vulnerability to development pressure

Variable	Variable Name	Variable Description	Source	Weight
DP	Development Pressure	A score depicting the likelihood of development in and around the selected parcel	n/a	n/a
LDI _a	Land Development Intensity- adjacent adverage	A score depicting the existing level of human disturbance for the surrounding area of a given parcel	original layer housed by FDEP	15%
FLU	Future Land Use	A descripton of the Future Land Use of a parcel and an associated numerical score	FL Geographic Data Library (UF Geoplan)	30%
SP	2040/2070 Sprawl Projection	A measure tracking density, population change rates, and patterns of development from 2010 on to provide projections of future sprawl.	UF Center for Landscape and Conservation Planning, 1000 Friends of Florida	30%
PD	Parcel Density	A measure of the density of parcels withing a 0.5 mile buffer around a parcel.	Tall Timbers	25%
BP**	Building Permits	A number depicting active building permits, residential only.	County building departments	n/a

DEVELOPMENT PRESSURE

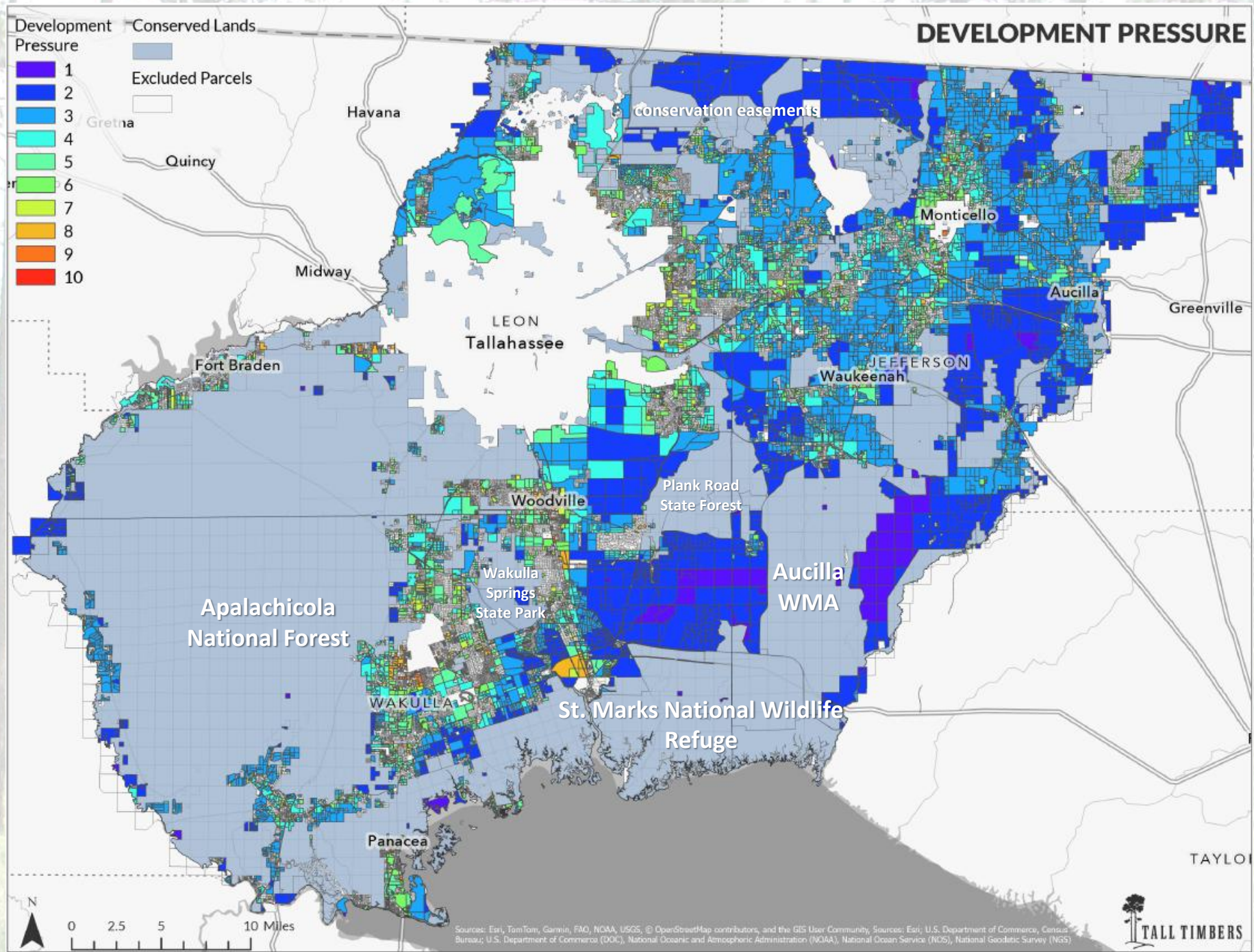
- Development Pressure Index (DPI) score for each tax parcel

PURPLE/BLUE = LOW

Development pressure

RED/ORANGE = HIGH

Development pressure



DEVELOPMENT PRESSURE

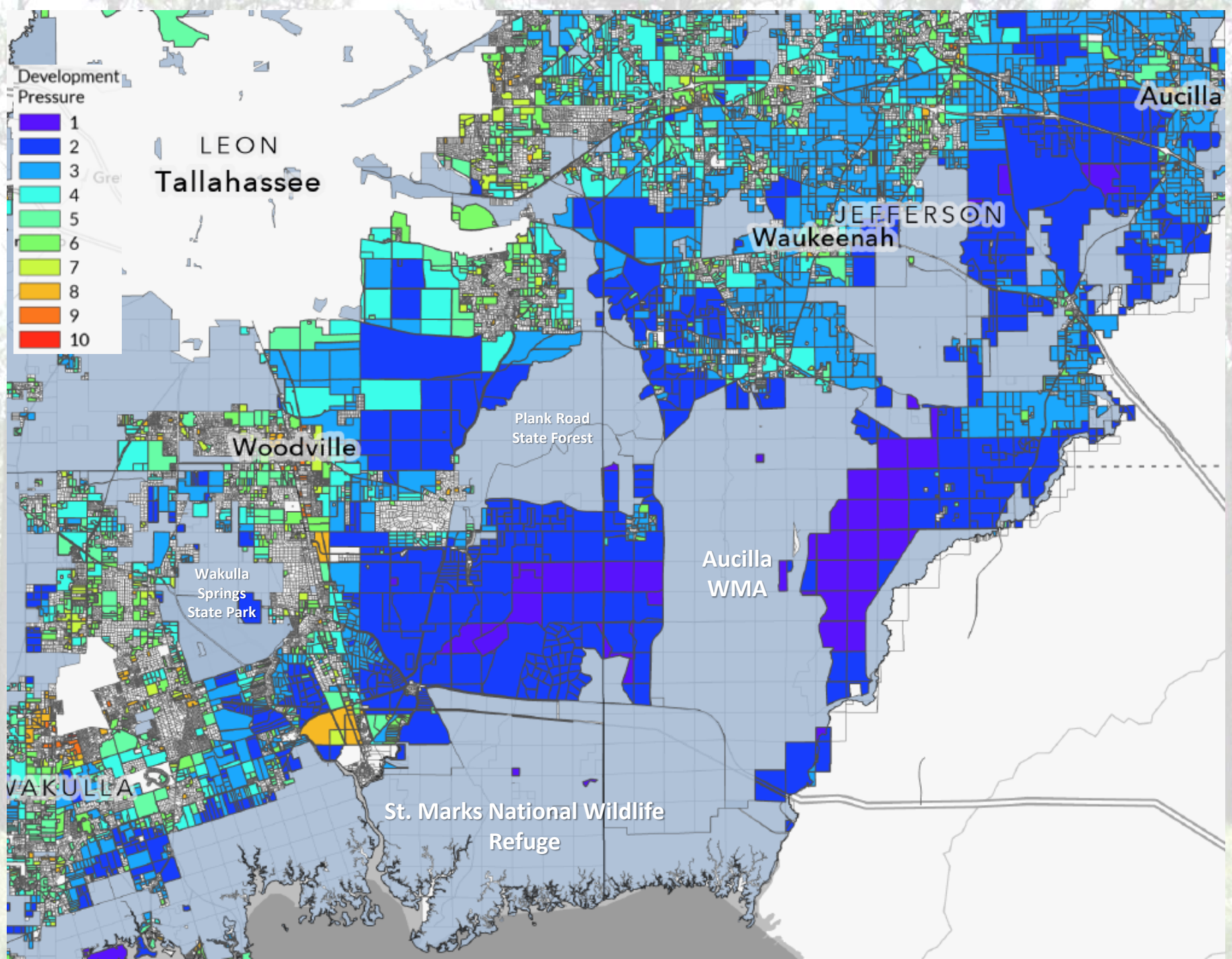
- Development Pressure Index (DPI) score for each tax parcel

PURPLE/BLUE = LOW

Development pressure

RED/ORANGE = HIGH

Development pressure

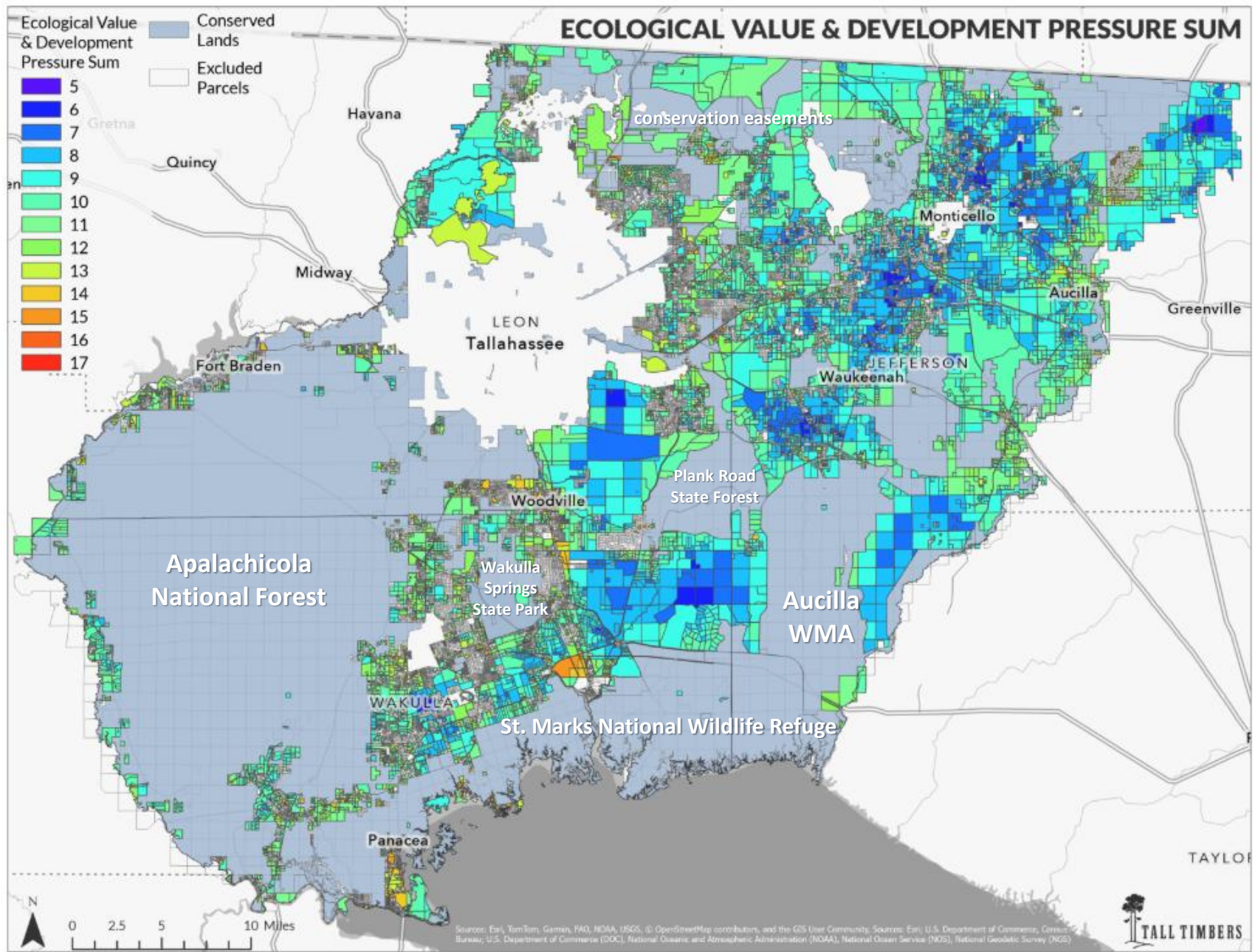


COMBINATION:

Maximum values for Ecological and Development Pressure

- PURPLE/BLUE = LOW Priority**

- RED/ORANGE = HIGH Priority**

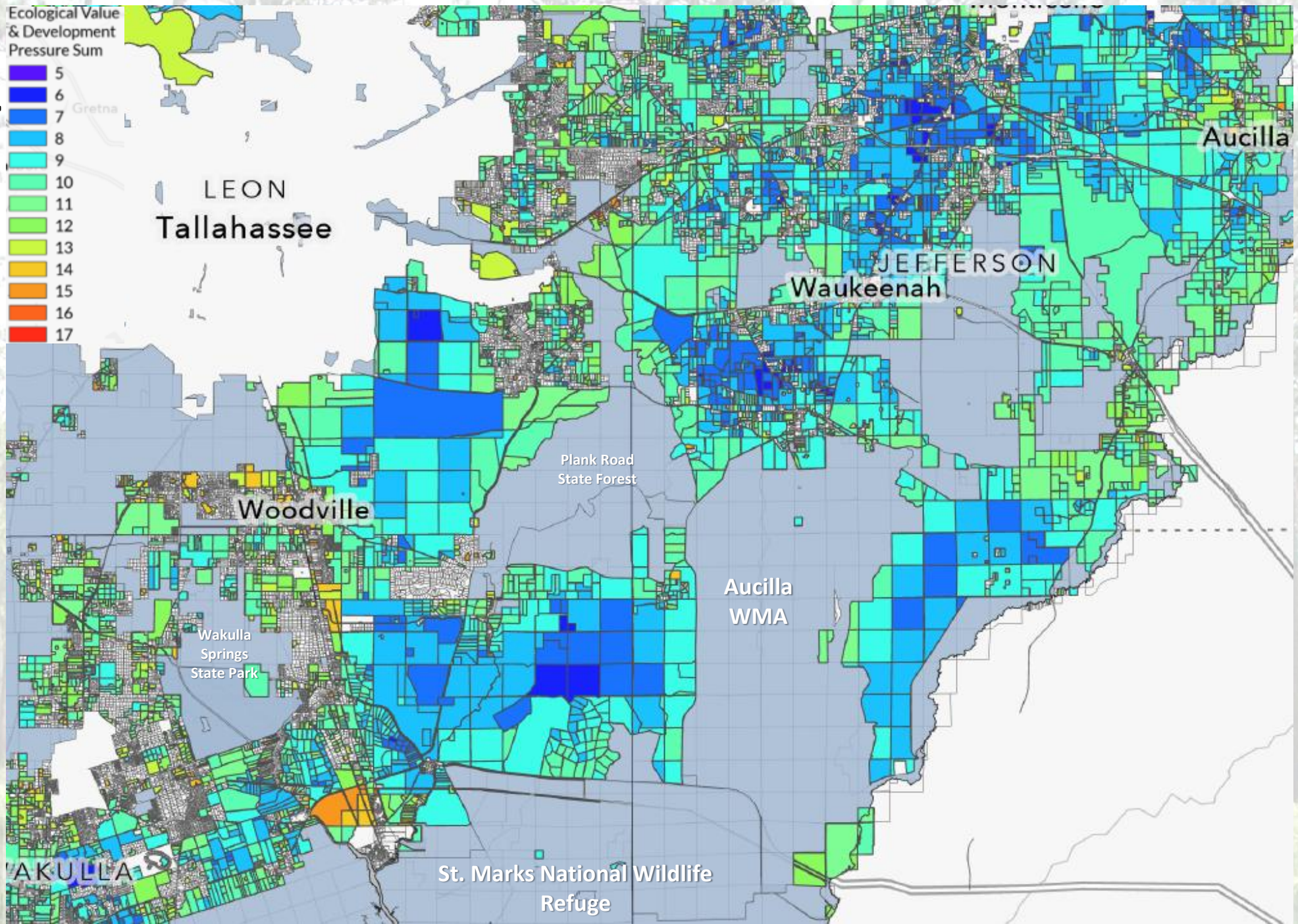


COMBINATION:

Maximum values for Ecological and Development Pressure

PURPLE/BLUE = LOW Priority

RED/ORANGE = HIGH Priority



CONNECTING WITH LANDOWNERS

Supporting a landowner with groundcover restoration efforts



Providing extension services for hurricane clean-up



Helping a landowner with funding to plant longleaf pine



Providing wildlife extension services and population restoration



Assisting new landowners with their first prescribed burn

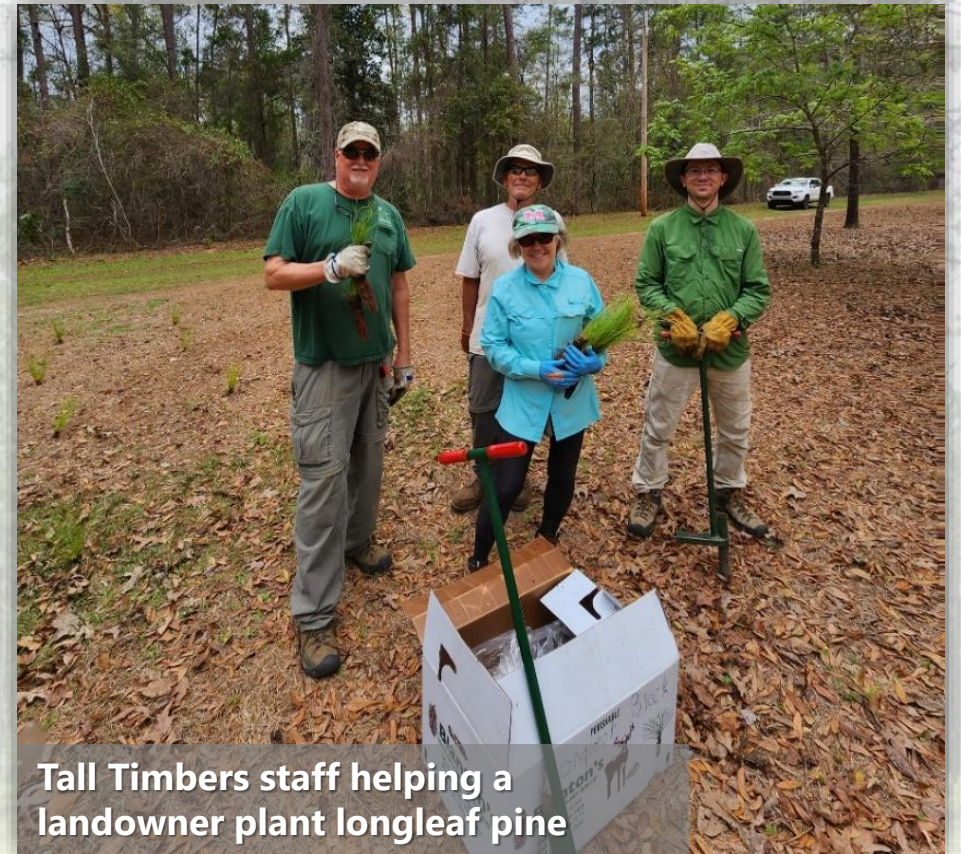


Meeting with a prospective conservation easement landowner



Tall Timbers RCPP- extension services new and old

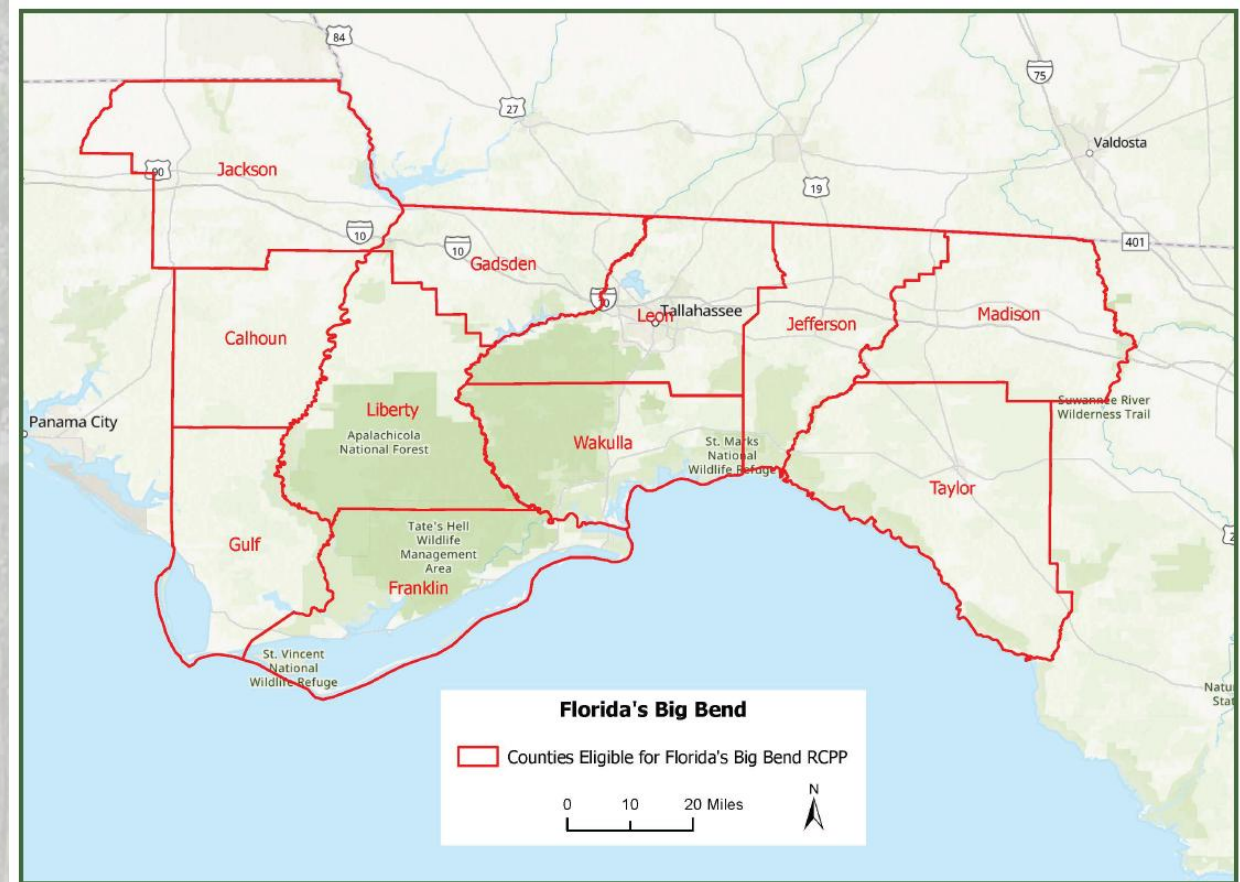
- Strategic Planning goal: expand extension work
 - Applied for “Red Hills to the Coast” RCPP in **2019**
 - Started land management & easements in **2021**
- **114 contracts**
 - 36% Historically Underserved
 - 13,000 acres of RX fire
 - Over 500,000 trees planted
 - 2,000+ acres of forest stand improvement
 - 900 acres of invasive exotic, non-native plants
 - Closed 3 Entity-held-easements in **2024- 686 acres**
 - Closed 2 RFL/ RCPP easements in **2026- 1,050 acres**
 - 3 in the works



Tall Timbers staff helping a landowner plant longleaf pine

Big Bend RCPP award

- Tall Timbers awarded **\$25 Million** from NRCS to continue our landowner assistance program
 - **11 county** region in the Big Bend
 - 2025 – 2029
- Financial assistance:
 - Cost share for eligible activities
- Management assistance:
 - TT technical assistance for implementing practices as needed
 - RX fire
 - Invasive control
 - Forest stand improvement
 - Tree planting



Making Connections in the Big Bend

- **GOAL:** Engage private landowners and public about Tall Timbers, the FL Wildlife Corridor, land conservation, and natural resource management opportunities
- Create Outreach/marketing materials
- Utilize 1) social media, 2) newspaper and magazine, 3) direct mailers
- Grow community and regional interest
- Broad-spectrum and targeted approach
- For strategic landowners, 3-5 touchpoints

Example advertisements for marketing campaign



SOCIAL MEDIA CAMPAIGN

Setup:

- 11 Big Bend Counties
- COST: \$240
- Reach: 40,000 viewers
- Direct connections: 863 clicks

Takeaways:

- Great return on investment (ROI)
- Anecdotally - generated positive interest
- Engaged a very broad audience



Example advertisement seen on Facebook

Front Porch Magazine is free throughout Jefferson Co.

The Front Porch
Where The Tea Is Sweet and the Talks Are Long Sept/Oct 2025

IRONWOOD HOMES OF PERRY

FAMILY BRINGING FAMILY HOME
PAGE 12

Madison County Training School
A Legacy for Learning
Page 46

WeatherSTEM
Keeping Eyes on the Skies
Page 38

Florida Wildlife Corridor Foundation
Murals with a Message
Page 18

Carmen Cummings Martin
Grateful for Her Country Roots
Page 26

GREENE PUBLISHING, INC.

TALLAHASSEE DEMOCRAT



CREATING CONSERVATION CORRIDORS

The Big Bend's working and wild lands are key to the Florida Wildlife Corridor



Technical and financial assistance is available to landowners in 11 Big Bend counties and Tall Timbers is here to help.

Consult with one of our dedicated biologists and, with your help, we can conserve this unique region and keep North Florida looking like North Florida.

**TO STAY IN THE KNOW OR SIGN UP,
SCAN THE QR CODE OR VISIT:
TALLTIMBERS.ORG/WILDLIFE-CORRIDOR**



PRINT MEDIA

Setup:

- Print and digital ads
- COST: \$5,475
- Reach: ~20,000 viewers

Takeaways:

- Narrower readership
- Potential to engage public not on social media
- Relatively expensive and hard to track return

POSTCARD MAILERS



Takeaways:

- Generated good public interest
- Strategic audience in FL Wildlife Corridor
- Better return on investment

Setup:

- COST: \$2,292
- 9,992 individual parcels
- Reach: 5,440 unique addresses (200 returned)

CREATING CONSERVATION AND WORKING LAND CORRIDORS

By connecting with Tall Timbers, we can help you find opportunities to enhance your stewardship practices and with your help, we can conserve this unique region.

TALL TIMBERS
13093 Henry Beadel Drive
Tallahassee, Florida 32312
850/893-4153 Phone
850/893-6470 Fax
talltimbers.org

Non-profit Org.
U.S. POSTAGE
PAID
Permit No. 329
Tallahassee, FL

Address service requested

*****AUTO**ALL FOR AADC 323 T10 P1 39 3037

TO STAY IN THE KNOW OR SIGN UP, SCAN THE QR CODE OR VISIT:
TALLTIMBERS.ORG/
WILDLIFE-CORRIDOR

CONNECTING WITH LANDOWNERS



talltimbers.org/wildlife-corridor

- Website landing page
- Sign up for newsletters
- Map of the Corridor and address lookup
- Ability to request a call from TT
- Builds landowner database



TALL TIMBERS

[About Us](#) [Articles](#) [Resources](#) [Subscribe](#) [Donate](#) [Contact Us](#) 1

Landowners are leading conservation and stewardship of Florida's working lands and wild spaces

[Tap into resources](#)

[Tell me more](#)

Why is the Big Bend Wildlife Corridor important?

Connection of public and private conserved lands and properties implementing conservation stewardship practices within 11 counties in the Big Bend will ensure a swath of natural and working lands are retained across the state. The care you and your neighbors take in managing your land all builds to a conservation corridor that's happening statewide.

[See if you're in the corridor](#)

Respecting private land ownership

Private landowners are crucial to the health of the ecosystem in the Big Bend. We respect private land ownership. By voluntarily connecting with us, you're helping bring more land stewardship resources to the region and preserve land for the benefit of people and wildlife.

[Sign up and stay in the know](#)



COMMUNITY SYNERGY AROUND THE FLORIDA WILDLIFE CORRIDOR AND LAND CONSERVATION

Florida Wildlife Corridor Mural in downtown Monticello, FL



Tallahassee-St. Marks Historic Railroad State Trail



New sign identifying the FL Wildlife Corridor

Questions?

Ben Naselius
Red Hills Planner
Tall Timbers

Bnaselius@talltimbers.org

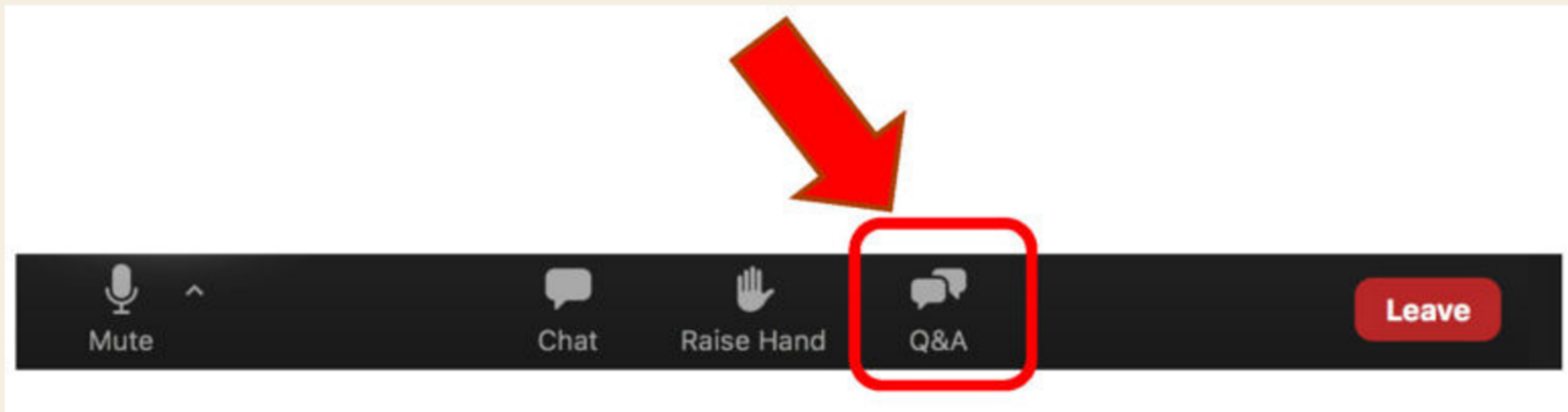
750-868-1929



Questions & Answers

Please submit questions for speakers using the Q&A button on your Zoom control panel.

Keep questions succinct and, if possible, indicate who your question should be directed to.



Professional Certification Credits

For those that attend the **live** event, this webinar has been approved for credits for:

- American Institute of Certified Planners (1.5 AICP CM #9325853)
- Florida Bar Attorneys (2.0 General CLEs, 2603997N)
- Florida Environmental Health Professionals (1.5 Contact Hours or 0.15 CEUs)
- Certified Floodplain Managers (1 CEC)
- Florida Landscape Architects (1.5 DBPR Credits #0015762)

1000 Friends has not applied for credits for those who view this broadcast at a later time.

Find credits for past webinars at 1000fof.org/upcoming-webinars/credits



Follow-up Survey, Certificate of Attendance

In the follow up email for the **LIVE WEBINAR** you will receive:

- A link to a **brief survey** to help us improve future webinars

You will also receive a **certificate of attendance** for this webinar, emailed to you within a couple of days post-webinar. Please email **friends@1000fof.org** if you do not receive a certificate within a week.

Information on professional certification credits for past webinars are available at ***1000fof.org/upcoming-webinars/credits***

Email **friends@1000fof.org** with any questions about credits or your certificate.



Upcoming Webinar



***From Swamp to Suburb: The True Cost of
Wetland Loss in Florida***
12 PM - 1:30 PM (ET)

REGISTER NOW



<https://1000fof.org/upcoming-webinars/>

Support 1000 Friends



Platinum
Transparency
2026

Candid.

DONATE

at www.1000fof.org/donate

(you may designate it for the DeGrove Webinar Fund)

SPONSOR

\$250 to become a Webinar Sponsor

Please email friends@1000fof.org to learn more



1000FOF.ORG



Scan to donate