



Dr. John M. DeGrove Webinar Series

Promoting Transportation Equity in Florida



IMPORTANT!



We only offer professional certification credits
for participants who attend the live webinar!

1000 Friends of Florida

Building Better Communities & Saving Special Places



Florida's leading nonprofit advocate for sustainable communities

Work with citizens, community and state leaders, conservation and business groups

Educate, advocate and negotiate to protect Florida's high quality of life





Dr. John M. DeGrove

May 4, 1924 – April 13, 2012

Icon of comprehensive planning
both in Florida and across the nation

Co-founder of 1000 Friends of
Florida

To find out more, please visit:
1000friendsofflorida.org/dr-degrove



Dr. John M. DeGrove Webinar Sponsors

FRIEND

Mr. Ronald L. Book, PA

Mr. Andy DeGrove

Ms. Kimberly A. DeGrove & Dr. Clyde Partin

Dickman Law Firm

Florida Power & Light Company

William Howard Flowers, Jr. Foundation

Kitson & Partners/Babcock Ranch

Dr. Jim Nicholas

Robert Parks, P.L.

The Perkins Charitable Foundation

Mr. Robert M. Rhodes



Dr. John M. DeGrove Webinar Sponsors

SPONSOR

Mr. Thomas J. Baird
Mr. William M. DeGrove
DPZ CoDesign, LLC
Ms. Susan Trevarthen

ANNIVERSARY CLUB

Mr. David M. Orshefsky

SUPPORTER

Mr. Lester Abberger
American Planning Association,
Florida Chapter
Debra & Robert Bergstrom
Mr. David Flinchum ASLA, AICP
Ms. Sara M. Fotopulos
Ms. Melissa Norman
Ms. Nancy Stroud
Treasure Coast RPC



This webinar has been approved for credits for:

- *1.5 AICP CM including 1 SOCIAL EQUITY CREDIT (#9230774) for planners*
- *2 CLE including 2 BIAS ELIMINATION CREDITS (2201860N) for Florida attorneys*
- *1 CEC for Certified Floodplain Managers*
- *1 contact hour for Florida Environmental Health Professionals*
- *1.5 hours for Florida Landscape Architects (DBPR course # 0012852).*

*Find credits for past webinars at
1000fof.org/upcoming-webinars/credits*



Follow up survey, certificate and credits:

In the follow up email for the LIVE WEBINAR you will receive:

- A link to a **brief survey** to help us improve future webinars
- A **certificate of attendance** (use Google Chrome to download)

*Information on credits for past webinars are available at
1000fof.org/upcoming-webinars/credits*



For DBPR Landscape Architects



1000 Friends is only approved for credits through the **Florida Department of Business and Professional Regulation**

Only those who attend the **live webinar** are eligible for DBPR credits

Due to changes in State of Florida reporting requirements, 1000 Friends will submit your credits on your behalf



Upcoming Webinars

Lessons from the Ocklawaha

Tuesday, May 17, 2022, Noon to 1:30 p.m. Eastern

Find out more and register at
1000fof.org/upcoming-webinars



Support 1000 Friends!

DONATE

at www.1000fof.org/donate

(you may designate it for DeGrove Education Fund if you wish)

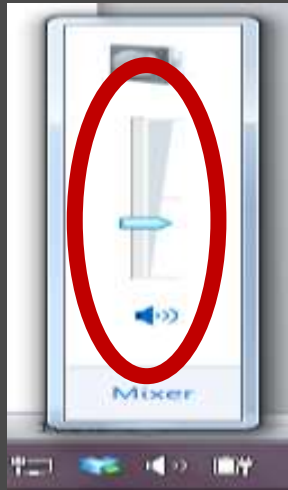
SPONSOR

the DeGrove webinars by emailing
vyoung@1000fof.org to find out more

AMAZON SMILE

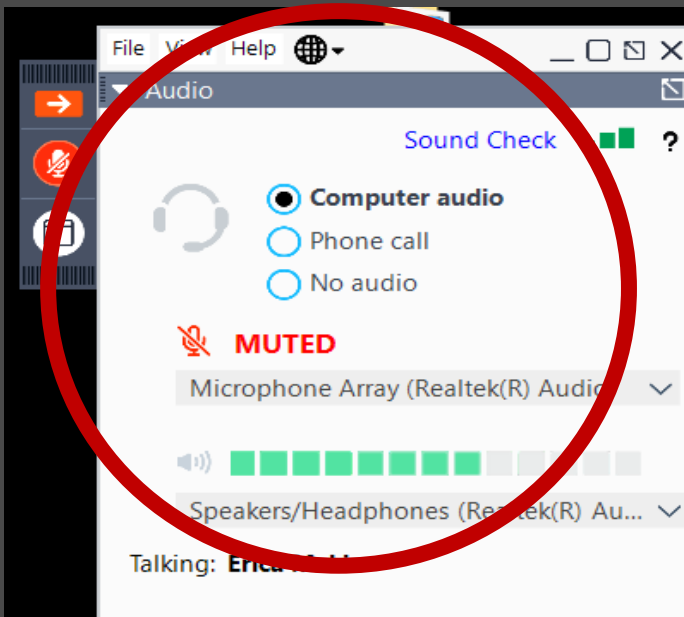
will make a donation to 1000 Friends
every time you purchase through
smile.amazon.com/ch/59-2761163





If you have sound issues:

1. Make sure the speaker on your computer is turned on
 - a. Adjust the volume on your computer
2. On Go-to-Webinar control panel click arrow to maximize control box
 - a. Click on arrow by Audio box to maximize it
 - b. Do Sound Check OR
 - c. Switch to Phone call and it will provide you with a number and pin



The PowerPoint is posted under “What’s New” at 1000fof.org

1000 FRIENDS of FLORIDA

2022 Session | Priorities | Toolkit | Webinars | M-CORES | 2070 Project | Outreach | About Us | DONATE

Saving Special Places • Building Better Communities

Search

Find Out More . . .

What's New?

2022 Florida Legislative Update

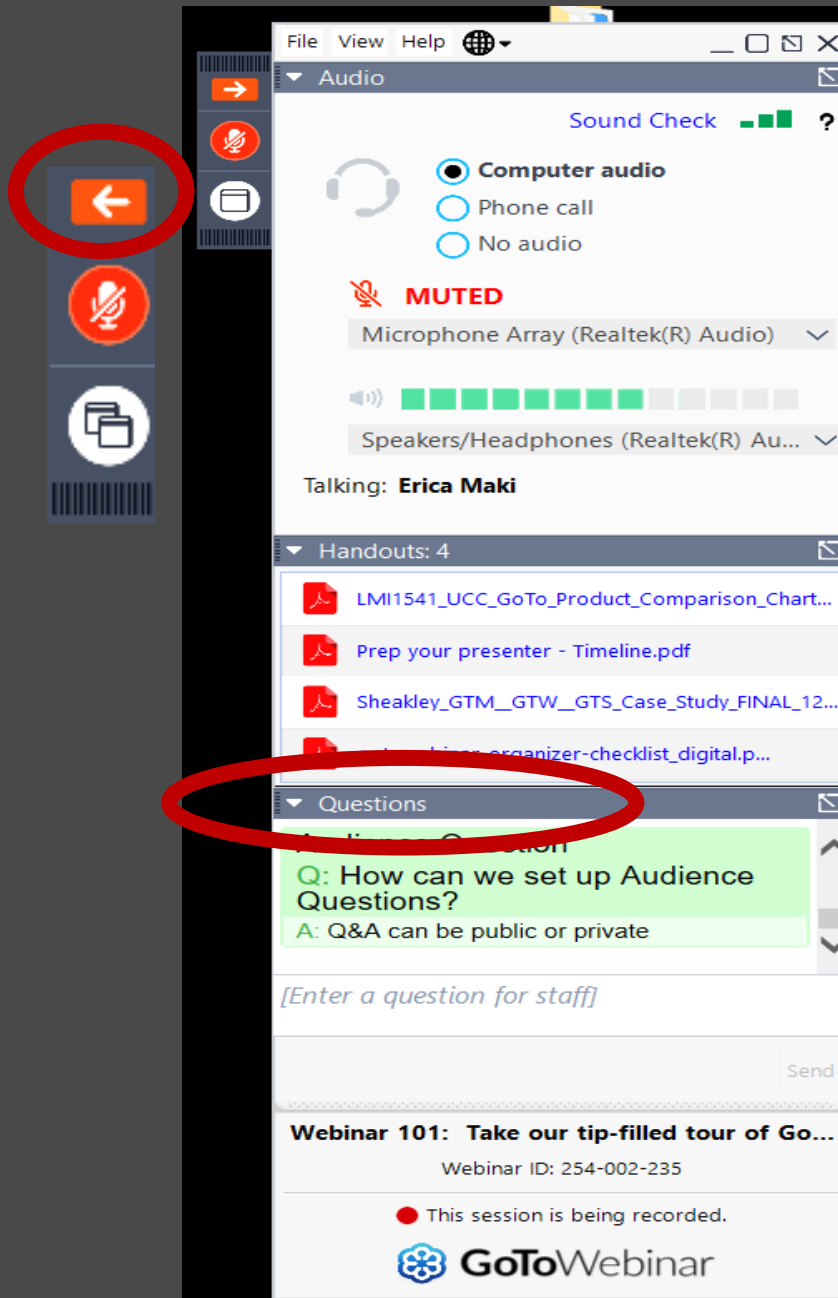
Find out what legislation is being considered this session and how you can make a difference.

Find out more

Get Ready for the 2022 Florida Legislative Session!

NEW: Transportation Planning in Florida Paper

NEW: Community Planning in Florida Paper



Please ask questions!

- Click on arrow at top right of your screen to maximize control panel
- Click arrow next to “Questions” to maximize the questions box
- Please type any questions in this box
- Please refer to the slide number and/or speaker when you post your question
- Please keep your questions succinct!
- Staff will ask the presenters questions, as time permits

Presenters



Bob Cambric
1000 Friends of Florida
Board Member



Jennifer Marshall, PE, Director
Fl. Department of Transportation
Office of Environmental Mgmt.



Commissioner Reggie Bellamy
Manatee County Board of
County Commissioners



Vivian Young, AICP
1000 Friends of Florida
Communications Director



Serves on the Board of Directors of 1000 Friends of Florida

An urban planner specializing in public policy, growth management, community redevelopment, economic development, and consensus-building

Master of Science in Planning and a Bachelor of Arts in International Affairs from The Florida State University, with over 30-years of urban planning and implementation experience

An inaugural member of the Florida Chapter of the American Planning Association's Equity, Diversity, and Inclusion Committee

Assists citizens and organizations to identify and reach consensus on a range of diverse issues including neighborhood redevelopment, water quality protection, coastal development and emergency preparedness, economic development, public school facilities planning, and small business lending

Former Director of Policy and Planning for the South Florida Regional Planning Council, Intergovernmental Resources Coordinator for the Florida Department of Community Affairs, Assistant Director of the Apalachee Regional Planning Council, and Interim Executive Director of the Hannibal Square Community Land Trust in Winter Park, Florida, and a private sector consultant

On the Board of Directors of SELF, a Florida-based non-profit that assists underserved communities by providing homeowners access to affordable and innovative financing for sustainable property improvements



Bob Cambric



Director of the Florida Department of Transportation Office of Environmental Management

More than 20 years of experience in the transportation industry including planning, NEPA and project development, roadway design, construction and maintenance

Extensive experience working in both the private and public sectors

A native of Bartow, FL, she was the first African American valedictorian of her high school

Attended an honors engineering program at The Ohio State University and later transferred to the University of Central Florida, where she graduated with a Bachelor's of Science in Civil Engineering

Also, a theatre professional and performer and has owned her own theatre company for the past 6 years

Resides in Tallahassee with her husband and three-year-old son

Jennifer Marshall, PE

Born and raised in Manatee County, and has over 20 years of experience in community development and youth impact in the County

As a Manatee County Commissioner, works with law enforcement to keep his community safe and support efforts to diversify the economy and create new jobs by working with schools and investing in workforce development

Is also the Executive Director of the Palmetto Youth Center, has a Florida Teacher Certification in Business Education, and a Bachelor's degree in Business Administration from Bethune Cookman University

Served in the United State Military from 1989 to 1993 receiving an honorable discharge as a Corporal

Community involvement includes Chairman of the Seaport of Manatee Authority Board and the Public Safety Council, and serves on the boards of Take Stock Children, Tampa Bay Area Regional Transient Authority (TBARTA), and the Florida Council of Social Status of Black Men and Black Boys

Was selected as the Citizen of the of year in 2021 by the Kappa Alpha Psi Fraternity, 2021 Best Manatee County Elected Official for April by SRQ Magazine

Very proud father of his one 21-year-old son



Commissioner
Reggie Bellamy



Vivian Young, AICP

Communications Director for 1000 Friends of Florida since 1996, managing website, alerts, legislative grassroots endeavors, newsletters, special reports, media outreach and other communications efforts

Coordinates special planning projects, including the M-CORES campaign, *Florida 2070/Water 2070*, and *Trouble in Paradise*

Launched and coordinates the monthly *Dr. John M. DeGrove Webinar Series* which has attracted more than 30,000 attendees since 2011

Served as 1000 Friends' Interim President in both 2014 and 2018

Previously Planner for the Historic Tallahassee Preservation Board and Architectural Review Board, and earlier Florida's first State Main Street Coordinator, receiving an individual achievement award from the Florida Heritage Foundation for preservation work

Master of Urban Planning degree with honors from the University of Illinois at Urbana-Champaign and Bachelor of Arts from Washington College in Chestertown, Maryland

A member of the American Institute of Certified Planners



Bob Cambric



What is Social Equity?

“The fair, just and equitable management of all institutions serving the public directly or by contract; and the fair and equitable distribution of public services, and implementation of public policy; and the commitment to promote fairness, justice and equity in the formation of public policy.”

Source: National Academy of Public Administration



History of Social Equity Planning

“We believe that social equality, by a reasonable interpretation of the words, mean moral, mental and physical fitness to associate with one’s fellowmen. In this sense THE CRISIS believes absolutely in the Social Equality of the Black and White and Yellow races and it believes too that any attempt to deny this equality by law or custom is a blow at Humanity, Religion and Democracy.”

Source: W.E.B. Du Bois, “The Social Equality of Whites and Blacks,” The Crisis, XXI (November, 1920), p. 16.

-



W.E.B. DuBois

A sociologist, historian, civil rights activist, and founder of the NAACP, DuBois was the first Black American to earn a doctorate (from Harvard, in sociology). His work as an activist is well-known, but he rose to prominence in 1899 with the publication of *[The Philadelphia Negro](#)*. The study, which helped to cement the field of sociology as an academic discipline, examines the form and function of Philadelphia's Black community, which was poorly understood due to segregation — it largely operated out of the context of other urban communities. This study was among the first to openly conclude that discrimination was at the heart of the problems plaguing isolated Black urban communities.

Source: <https://www.planning.org/planning/2021/winter/11-black-urbanists-every-planner-should-know/>

History of Social Equity Planning

“Equity requires that government institutions give priority attention to the goal of promoting a wider range of choices for those Cleveland residents who have few, if any, choices.”

Source: “The Cleveland Policy Plan Report,” Norman Krumholz, Janice Cogger, John Linner, in Journal of the American Institute of Planners, September, 1975.

-





Norm Krumholz


- As Planning Director in Cleveland between 1969 and 1979 under Carl Stokes, the first African American mayor of a major US city, Norm Krumholz commissioned a path-breaking Policy Planning Report that advanced proposals to promote greater equity within the city and the region.
- Equity planning was a brilliant expression of the importance for urban social movements of having allies inside government, or what is commonly called an “inside-outside strategy.” It challenged the powerful influence on planners of elitism, bureaucratic stagnation, narrow professionalism and racism.

Source: <https://www.progressivecity.net/single-post/2020/01/02/norman-krumholz-1927-1919-working-for-equity-inside-government>

A large orange circle on the left side of the page, partially cut off by the edge.

American Planning Association Equity, Diversity, and Inclusion Vision Statement

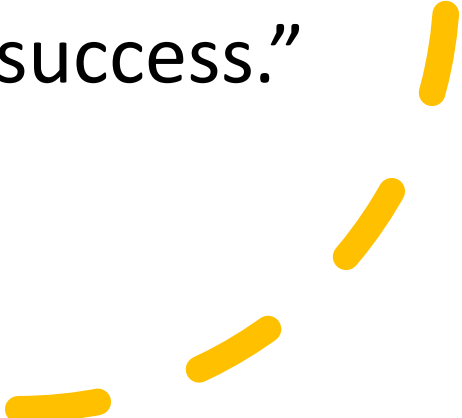
“**Diversity** is an inclusive concept that encompasses, but not is not limited to, race, ethnicity, class, gender, age, sexuality, ability, educational attainment, spiritual beliefs, creed, culture, tribal affiliation, nationality, immigration status, political beliefs, and veteran status. With greater diversity, we can be more creative, effective, and just, and bring more varied perspectives, experiences, backgrounds, talents, and interests to the practice of planning and to the communities we serve.”

Four yellow curved lines of varying lengths and orientations, arranged in a loose arc in the bottom right corner.

A large orange circle is positioned on the left side of the slide, partially cut off by the edge. It contains the title text in white.

American Planning Association Equity, Diversity, and Inclusion Vision Statement


Inclusion “demonstrates an environment in which all individuals are treated fairly and respectfully; are valued for their distinctive skills, experiences, and perspectives; have equal access to resources and opportunities; and can contribute fully to the organization’s success.”

A series of four yellow dashed line segments are arranged in a curved, upward-pointing arc in the bottom right corner of the slide.

A large orange circle on the left side of the slide, partially cut off by the edge.

American Planning Association Equity, Diversity, and Inclusion Vision Statement

Equity is “just and fair inclusion into a society in which all can participate, prosper, and reach their full potential. Unlocking the promise of the nation by unleashing the promise in us all.” The inclusive, holistic nature of this definition provides the foundation for considering and applying an equity process in all facets of planning, all levels of planning, all means of planning, and in all planning policies, working to eliminate socioeconomic disparities.

A series of yellow dashed lines in the bottom right corner, forming a curved shape.

American Institute of Certified Planners (AICP) Code of Ethics

- We shall always be conscious of the rights of others.
- We shall provide timely, adequate, clear, and accurate information on planning issues to **ALL** affected persons and to governmental decision makers.
- We shall seek social justice by working to expand choice and opportunity for all persons, recognizing a special responsibility to plan for the needs of the disadvantaged and to promote racial and economic integration.

Why Social Equity Planning Matters

- From 2010 to 2018, Florida showed steady economic improvements according to traditional measures. Unemployment in the state and across the U.S. fell to historic lows, GDP grew, and wages rose slightly.
- In 2018, 13% of households in Florida were living below the Federal Poverty Level (FPL), another 33%— more than twice as many — were ALICE households: Asset Limited, Income Constrained, Employed.

Why Social Equity Planning Matters

- ALICE households earn too much to qualify as “poor” but are still unable to make ends meet. They often work as cashiers, nursing assistants, office clerks, servers, laborers, and security guards. These types of jobs are vital to keeping Florida’s economy running smoothly, but they do not provide adequate wages to cover the basics of housing, childcare, food, transportation, health care, and technology for these ALICE workers and their families.

Why Social Equity Planning Matters

- Generally, the most important predictor of who participates is socioeconomic status, which depends on education level and income

Source: Pauline Mogilevsky. "Public Meetings: Barriers and Solutions"
https://cedar.wvu.edu/cgi/viewcontent.cgi?article=1136&context=www_honors

- "Historically, people of color and indigenous communities (POCI), renters, and people from low-income backgrounds have been underrepresented in civic processes."

Source: Minnesota 2040 (Public Engagement Plan)



Equality



The assumption is that everyone benefits from the same supports. This is equal treatment.

Equity



Everyone gets the supports they need (this is the concept of "affirmative action"), thus producing equity.

Justice



All 3 can see the game without supports or accommodations because **the cause(s) of the inequity was addressed.** The systemic barrier has been removed.



I am an invisible man. I am a man of substance, of flesh and bone, fiber and liquids - and I might even be said to possess a mind. I am invisible, understand, simply because people refuse to see me.

— Ralph Ellison —

AZ QUOTES



Jennifer Marshall

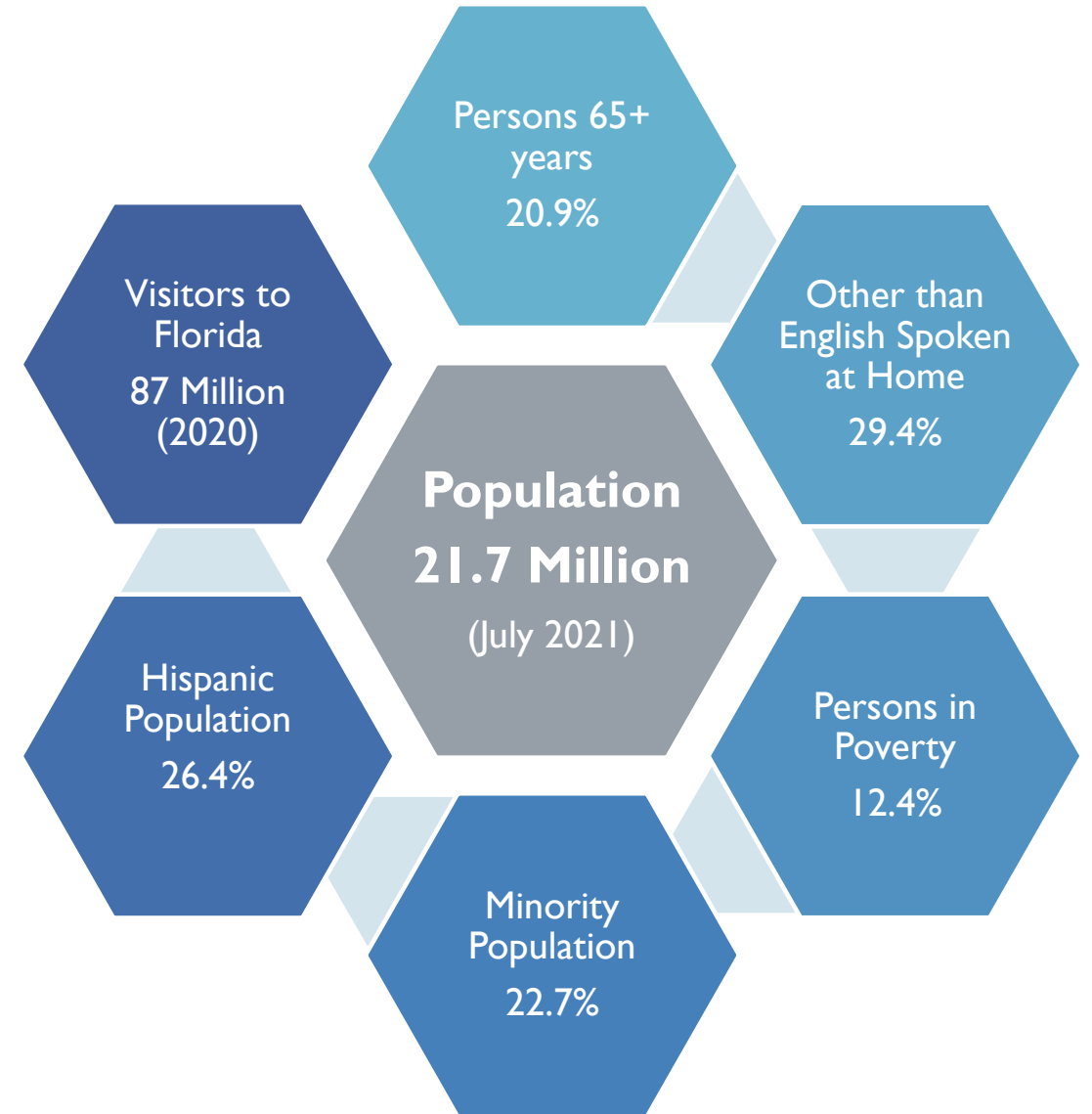
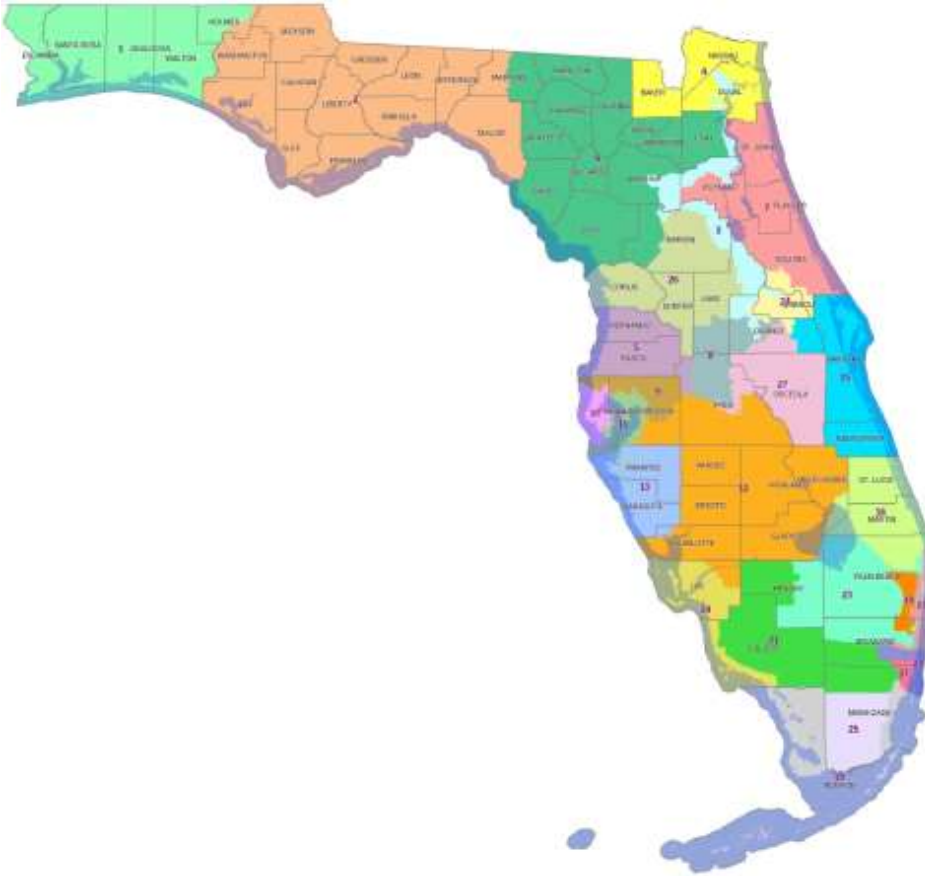


Project Development: **A Journey in Shared Values**

Jennifer Marshall, PE
Director, Office of Environmental Management

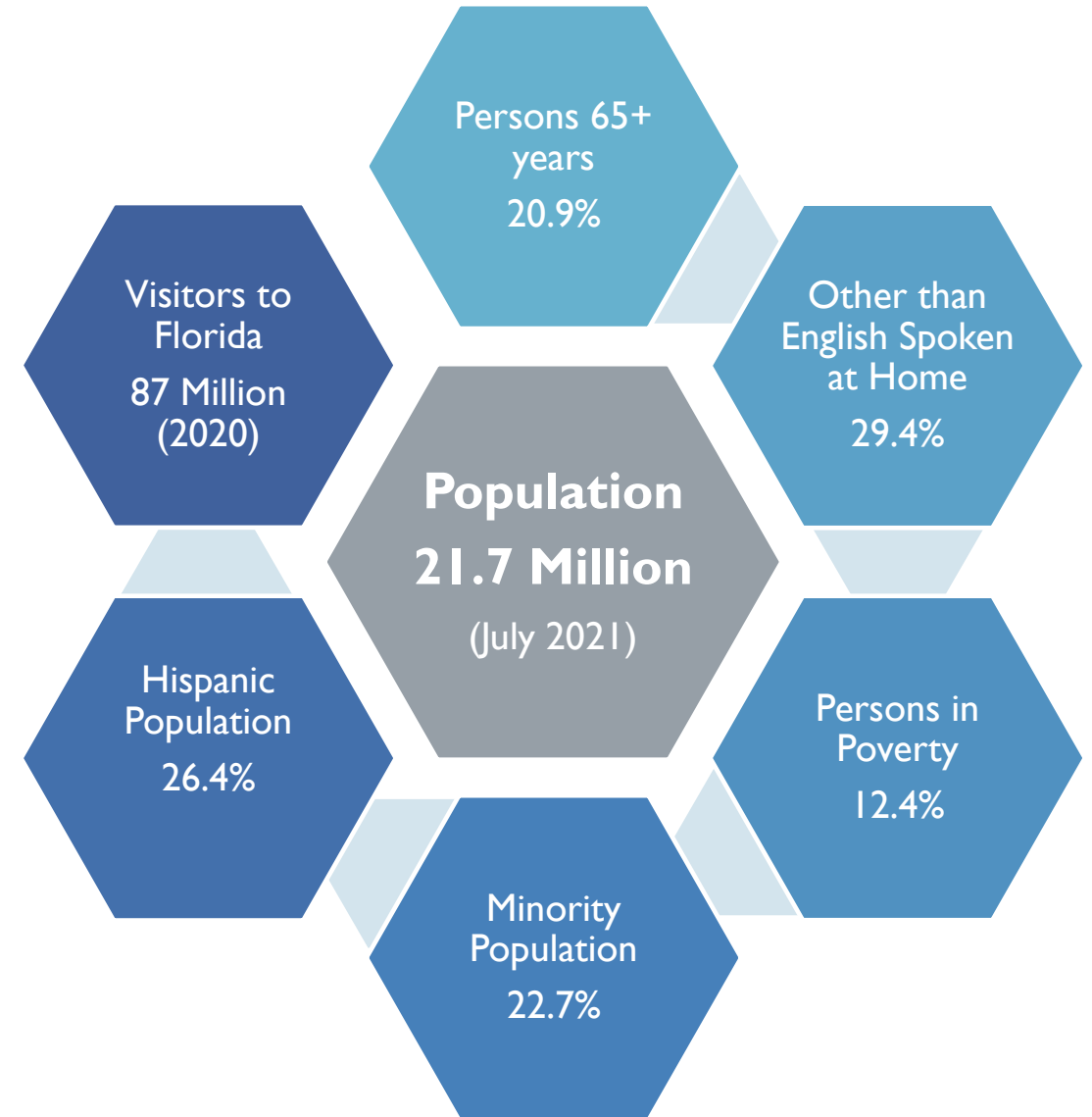
What matters to you?

Florida – Dynamically Diverse



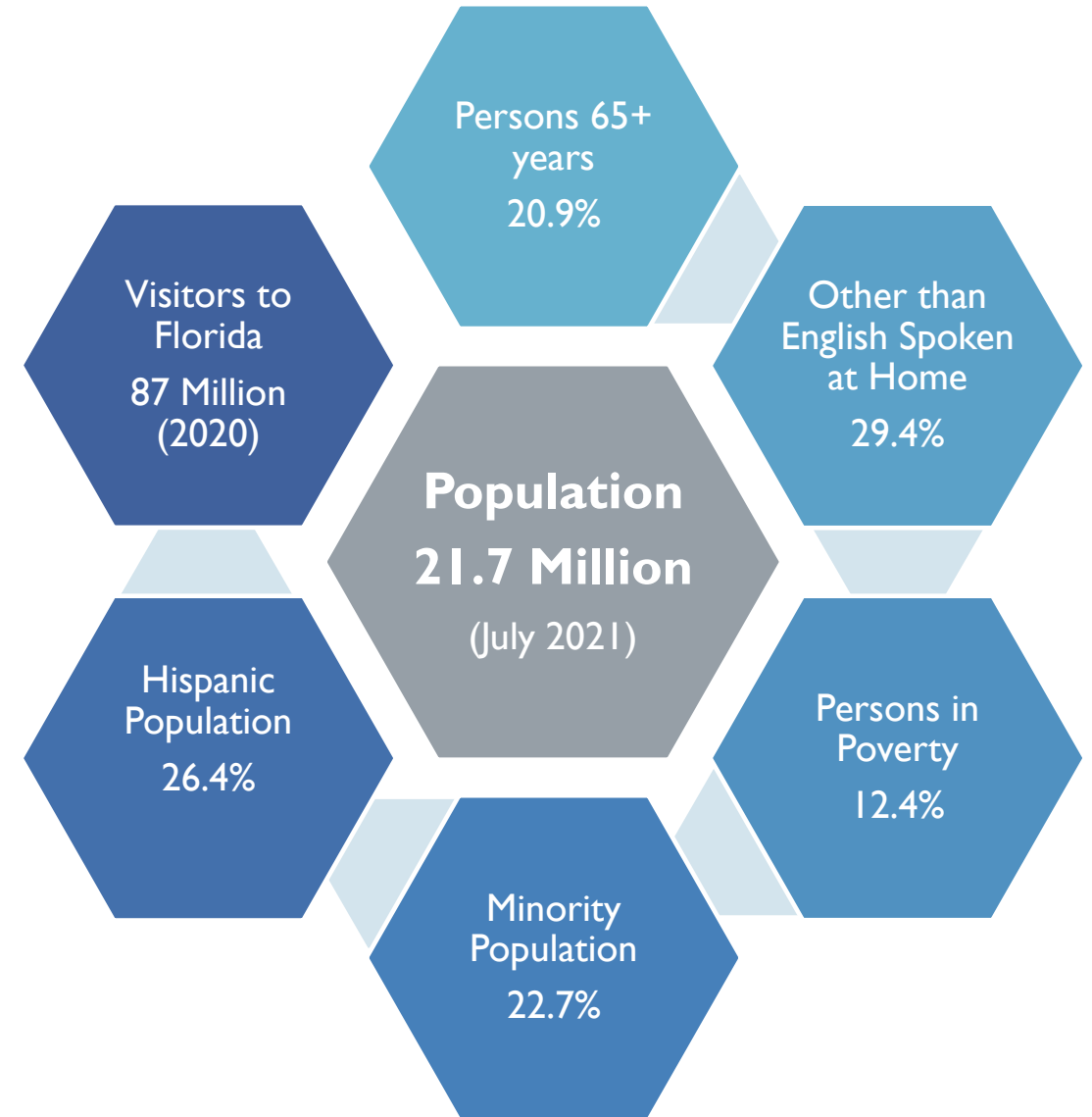
Florida – Dynamically Diverse

- High School Degree or Higher – 88.5%
- Bachelor's Degree or Higher – 30.5%
- Households with computer – 93.1%
- Households with broadband internet subscription – 85.4%



Florida – Dynamically Diverse

- 7,399 Miles of Bicycle Facilities
- 3,567 Miles of Pedestrian Facilities
- 218 Million Annual Transit Passenger Trips
 - 58% live within ½ mile of fixed transit route
- 2,746 Miles of Rail



FDOT Mission:

Provide safe
transportation system

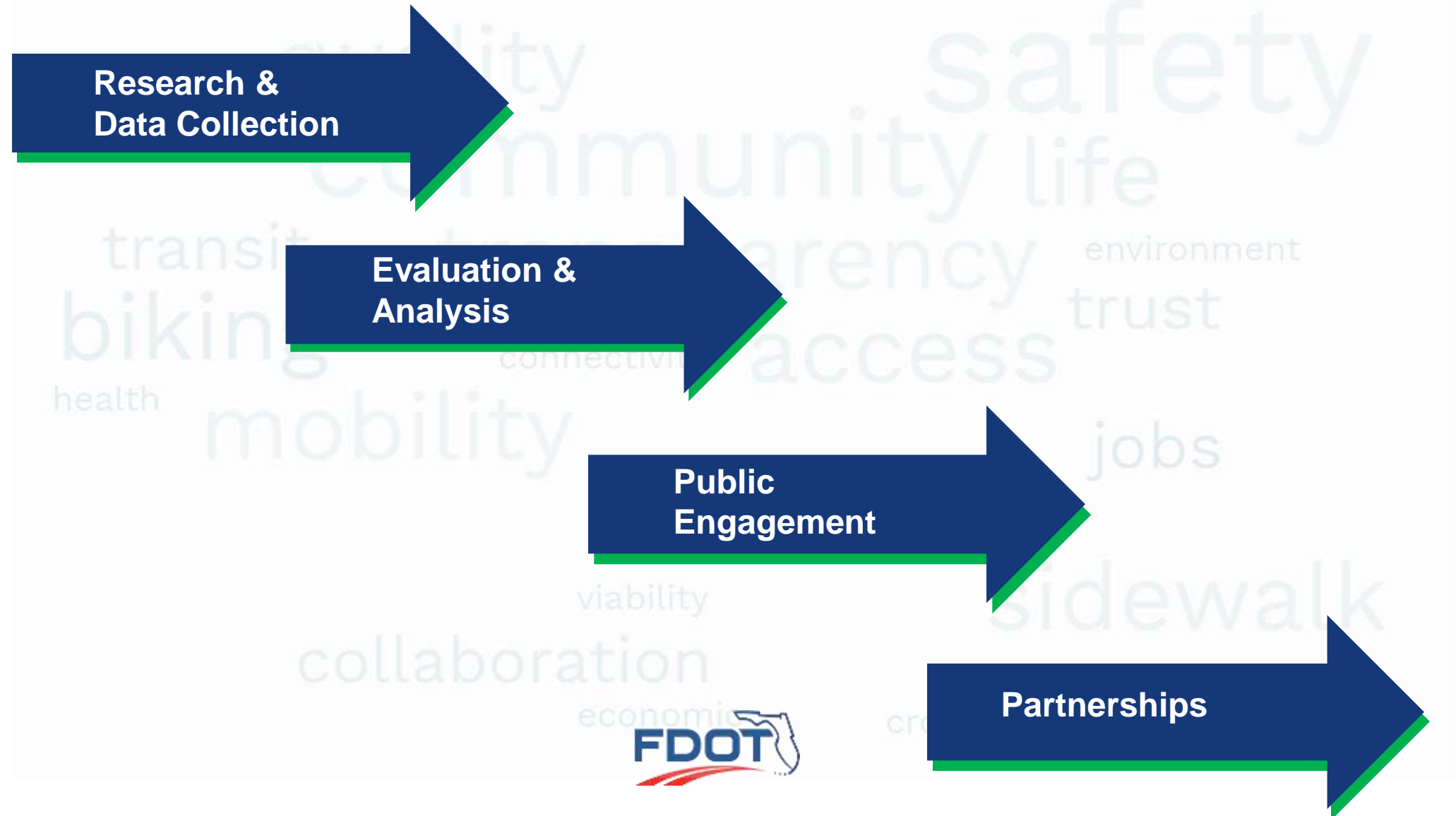
Ensure mobility of
people and goods

Enhance economic
prosperity

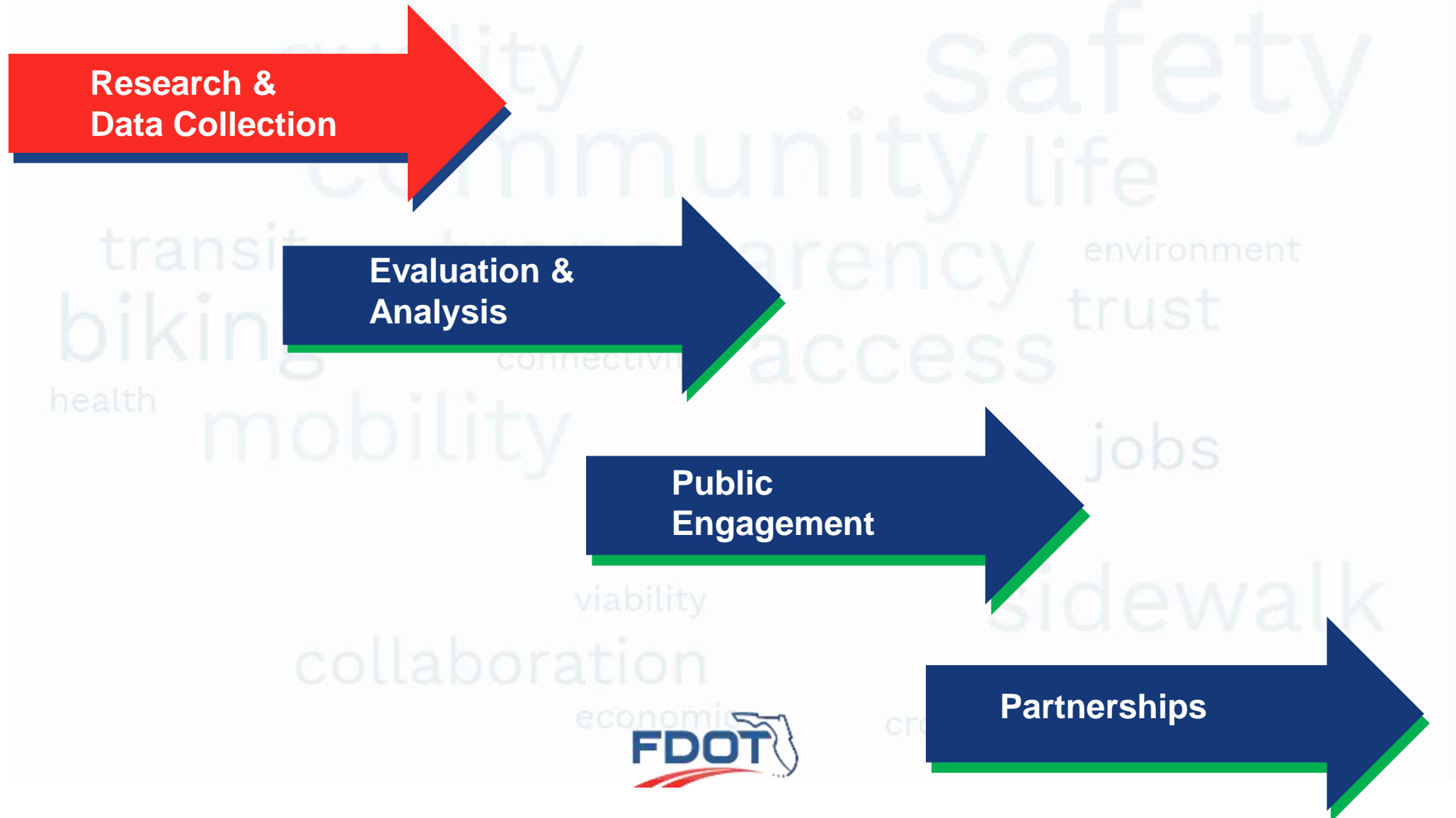
Preserve quality of
environment and community



Our Journey ...



Our Journey ...



Efficient Transportation Decision Making (ETDM)

<https://etdmpub.flh-estat.org/est/>

FDOT Florida Department of **TRANSPORTATION**

Search FDOT... E-Updates | FL511 | Mobile | Site Map

Home About FDOT Contact Us Offices Maps & Data Performance Projects

Environmental Screening Tool

etdm
Efficient Transportation Decision Making

Search ETDM Public Site for... **Site Search**

Welcome ETDM Program Information Project Information ETDM Contacts [View Interactive Map](#)

Project Search new search

Select a search option:
[Project Number](#)
[Project Name](#)
[Planning Organization](#)
[County](#)
[District](#)
[Degree of Effect](#)
[Project Phase](#)

First Time Users

ETDM Program Information
 Overview
 Agency Review Responsibilities
 Document Library
 Guidance
 Manuals
 Acronyms
 Glossary
 Agency Agreements
 Annual Reports

Welcome
 First Time Users
 Contacts
 FAQs
 What's New
 Subscribe/Unsubscribe
 Site Map
 Home

↑ **Help**

First Time Users

This site provides public access to information about proposed transportation projects, agency comments on a variety of environmental and sociocultural issues associated with those projects, and various documents describing the ETDM Process.

Learn more about the ETDM Process by reading the Overview paper found under the "ETDM Program Information" pull-down. Then explore more detailed information about the ETDM Process using other options under this menu (for example, a glossary of ETDM terms and the Document Library).

To find a proposed transportation project in the ETDM Process, use the "Project Search" feature on this page. If you know the ETDM number assigned to the project, select the "Project Number" search option, then enter the project number and press "go." Projects can also be found by typing in the Project Name, Planning Organization, the County or FDOT District where the project is located. Select one of these options from the "Project Search" menu, type in the pertinent information, and then press "go."

After selecting a project of interest, use the "View Interactive Map" option or the "Project Information" pull-down menu to view specific information about the project. The "Project Information" menu includes printable standard maps created for the selected project in PDF format. It also provides access to an interactive map viewer, which allows you to query the data on the map and change which features are shown on the map. In addition, the menu also includes various reports that describe the selected project and its alternative corridors, comments received from the Environmental Technical Advisory Team (ETAT), and data queries identifies natural resources.

Project Search new search

Select a search option:
 ■ [Project Number](#)
 ■ [Project Name](#)
 ■ [Planning Organization](#)

Efficient Transportation Decision Making (ETDM)

Environmental Screening Tool

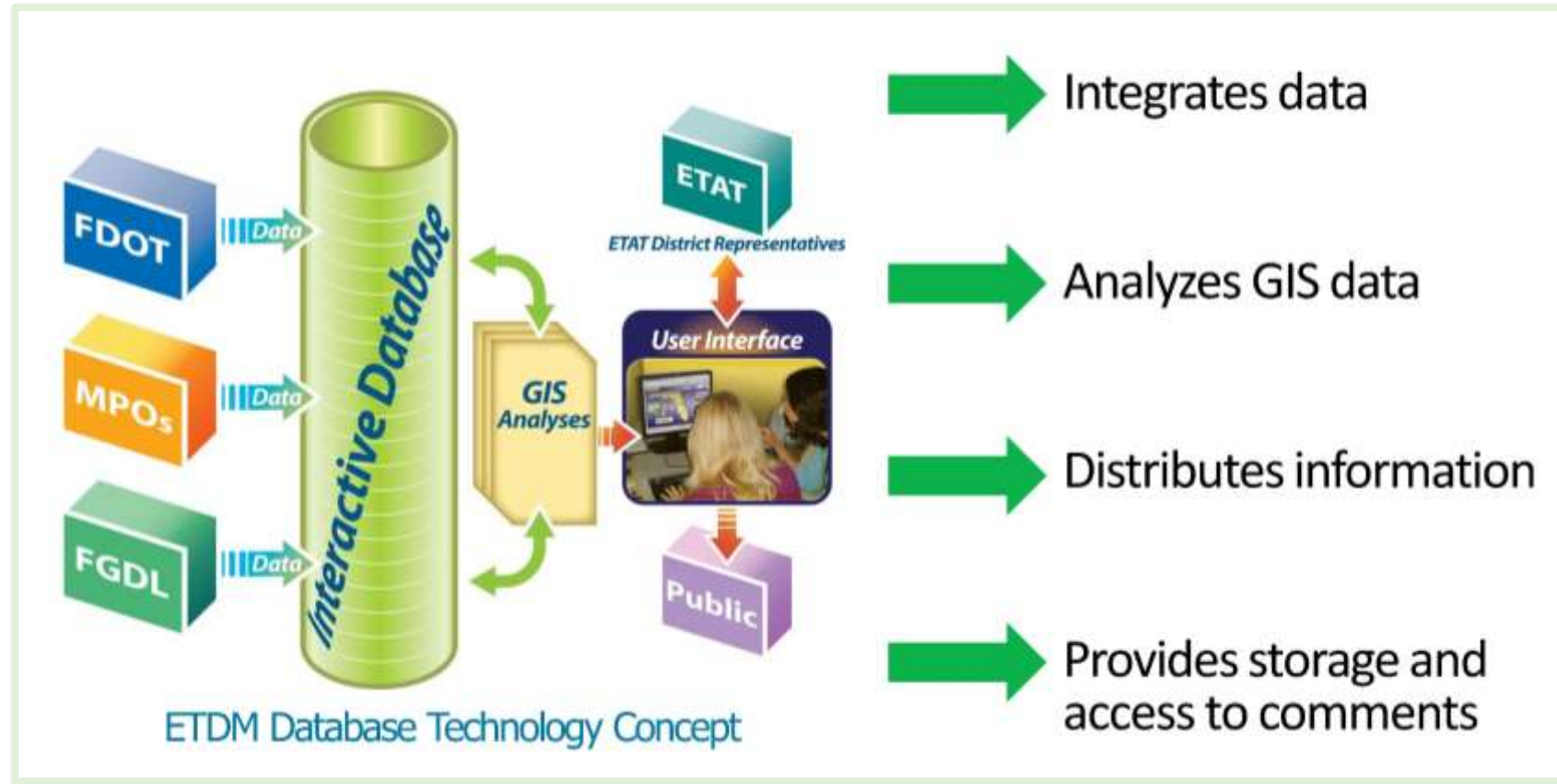
- Web-based user interface
- Partner with Florida Geographic Data Library (FDGL)
- Brings information from multiple sources into one consistent format

Environmental Technical Advisory Team (ETAT)

- Interagency team from 23 local, state, and federal agencies
- Specify fatal flaws and potential controversies
- Identify potential avoidance, minimization and mitigation opportunities
- Assist with development and refinement of reasonable alternatives



Efficient Transportation Decision Making (ETDM)



Sociocultural Data Report - Demographics

Sociocultural Data Report (Clipping)

ETDM #14486 - US 301

Milestone: 03/22/2022 - Programming Screen ETAT Review Started

Area: 1.952 square miles

Jurisdiction-Cities: NA

Jurisdiction-Counties: Hillsborough, Manatee

General Population Trends

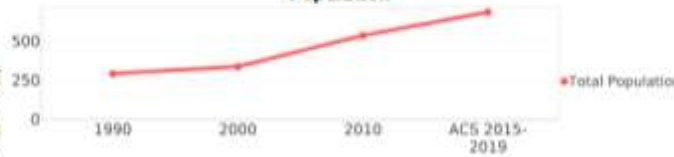
Description	1990	2000	2010	ACS 2015-2019
Total Population	293	338	537	686
Total Households	151	134	225	280
Average Persons per Acre	0.37	0.55	0.76	1.01
Average Persons per Household	2.69	2.77	2.75	2.68
Average Persons per Family	2.83	3.12	2.86	2.99
Males	131	165	264	349
Females	161	172	272	337

Race and Ethnicity Trends

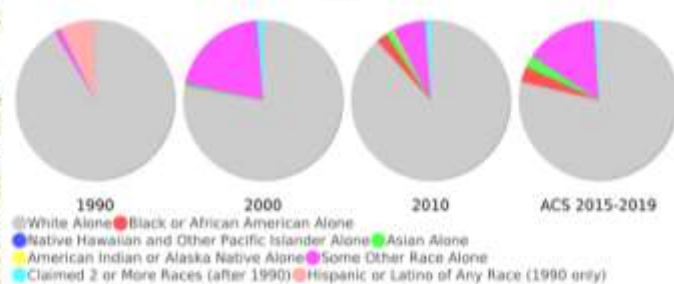
Description	1990	2000	2010	ACS 2015-2019
White Alone	287 (97.95%)	260 (76.92%)	471 (87.71%)	538 (78.43%)
Black or African American Alone	0 (0.00%)	0 (0.00%)	12 (2.23%)	22 (3.21%)
Native Hawaiian and Other Pacific Islander Alone	0 (0.00%)	0 (0.00%)	0 (0.00%)	0 (0.00%)
Asian Alone	0 (0.00%)	2 (0.59%)	7 (1.30%)	17 (2.48%)
American Indian or Alaska Native Alone	0 (0.00%)	0 (0.00%)	2 (0.37%)	0 (0.00%)
Some Other Race Alone	4 (1.37%)	69 (20.41%)	36 (6.70%)	101 (14.72%)
Claimed 2 or More Races	NA (NA)	4 (1.18%)	6 (1.12%)	6 (0.87%)
Hispanic or Latino of Any Race	23 (7.85%)	119 (35.21%)	157 (29.24%)	181 (26.38%)
Not Hispanic or Latino	270 (92.15%)	219 (64.79%)	380 (70.76%)	505 (73.62%)
Minority	23 (7.85%)	124 (36.69%)	162 (33.89%)	223 (32.51%)



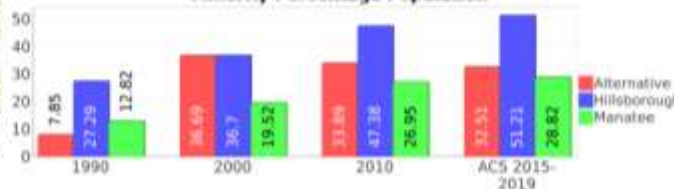
Population



Race



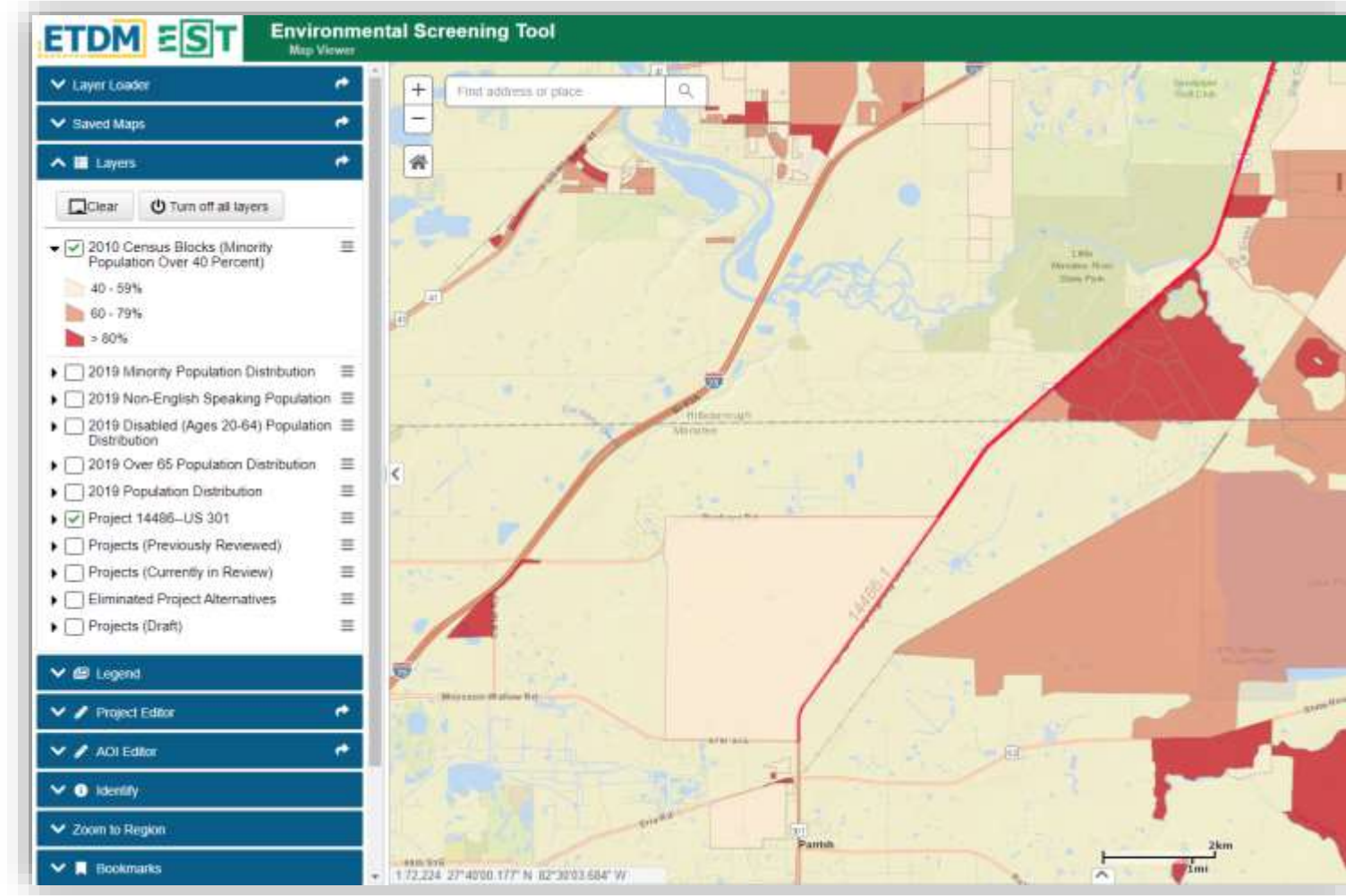
Minority Percentage Population



- General Population Trends
- Race and Ethnicity Trends
- Age Trends
- Income Trends
- Disability Trends
- Educational Attachment Trends
- Geographic Mobility
- Computers and Internet
- Household Languages
- Housing Trends
- Community Facilities

Sociocultural Data Report – GIS Maps

- Non-English-Speaking Population
- 65+ Years Population
- Minority Population Distribution
- Community Facilities
- Land Use



Environmental Technical Environmental Team (ETAT)



Preliminary Environmental Discussion Report

Analysis Areas for this report: Project Level, US 301

Social and Economic

Social

Analysis Area

Areas: US 301

Degree of Effect: **Moderate**

The Environmental Screening Tool (EST) Sociocultural Data Report (SDR) was used for demographic data (the SDR can be found within the Community Coordination of the EST). The SDR uses the Census 2015 - 2019 American Community Survey (ACS) data and reflects the approximation of the population based on the area of the 500-foot project buffer area intersecting the Census block groups along the project corridor. Using the 500-foot project buffer area, the SDR identified the following demographics:

Population and Income

The SDR identified 280 households with a population of 686 people. The median household income in the project area is \$74,286 compared to the median household income in Manatee County of \$59,009 and Hillsborough County of \$58,884. Approximately 10% of households are below poverty level. A further review of the US Environmental Protection Agency (USEPA) EJSCREEN Mapping Tool identified low income percentage areas along the project. The households below poverty level throughout the project ranges from 8% to 62%, most of which are along the eastern portion of the project from the Manatee/Hillsborough County Line to SR 674.

Race and Ethnicity

The minority population makes up 32.51% of the total population of 686 people, within the project area, comprising of "Some Other Race Alone" with 101 people (14.72%), "Black or African American Alone" with a population of 22 people (3.21%), "Asian Alone" with 17 people (2.48%), and "Claimed 2 or More Races" with 6 people (0.87%) within the 500-foot project buffer area. There are 181 people (26.38%) that have a "Hispanic or Latino of Any Race" ethnicity.

To conduct a detailed analysis of minority totals within the Census block groups the 2010 US Census block data was utilized since it provides more information than the SDR. This data gives totals for the entire Census block group which may extend outside of the project area and does not reflect the approximation of the population based on area of the 500-foot project buffer area intersecting the Census block groups. This data identified 11 Census blocks with a total population of 1,246 people that have a minority population greater than 40% within the project area. Most of which are located between the Manatee / Hillsborough County Line and Ruth Morris Road along the east side of the corridor.

A further review of the USEPA EJSCREEN Mapping Tool confirms minority populations are throughout the project area. The highest minority population percentage (72-82%) lies on the east side of the project between the Manatee / Hillsborough County Line and SR 674 while the minority population percentage throughout the rest of the corridor is between 40-60%.

During the Project Development and Environment (PD&E) study, the FDOT will evaluate potential adverse effects to any distinct minority populations in the project area.



- Social
- Economic
- Land Use Changes
- Mobility
- Aesthetic Effects
- Relocation Potential
- Farmlands

Upcoming Process Enhancement



Climate and Economic Justice
Screening Tool

BETA

Climate change

Reduction & remediation of legacy pollution

Clean energy & energy efficiencies

Critical clean water & waste infrastructure

Clean Transit

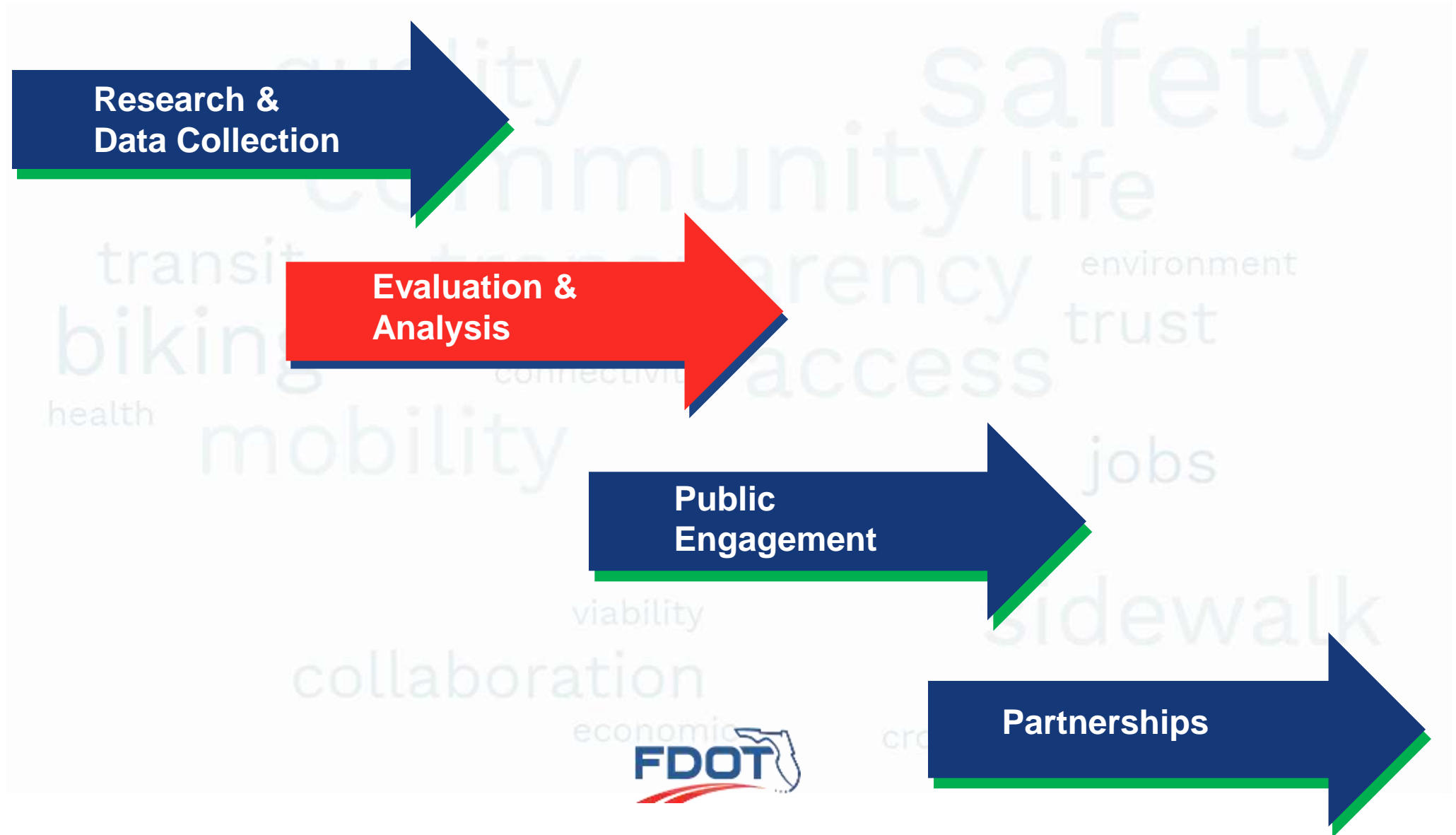
Health Burdens

Affordable & sustainable housing

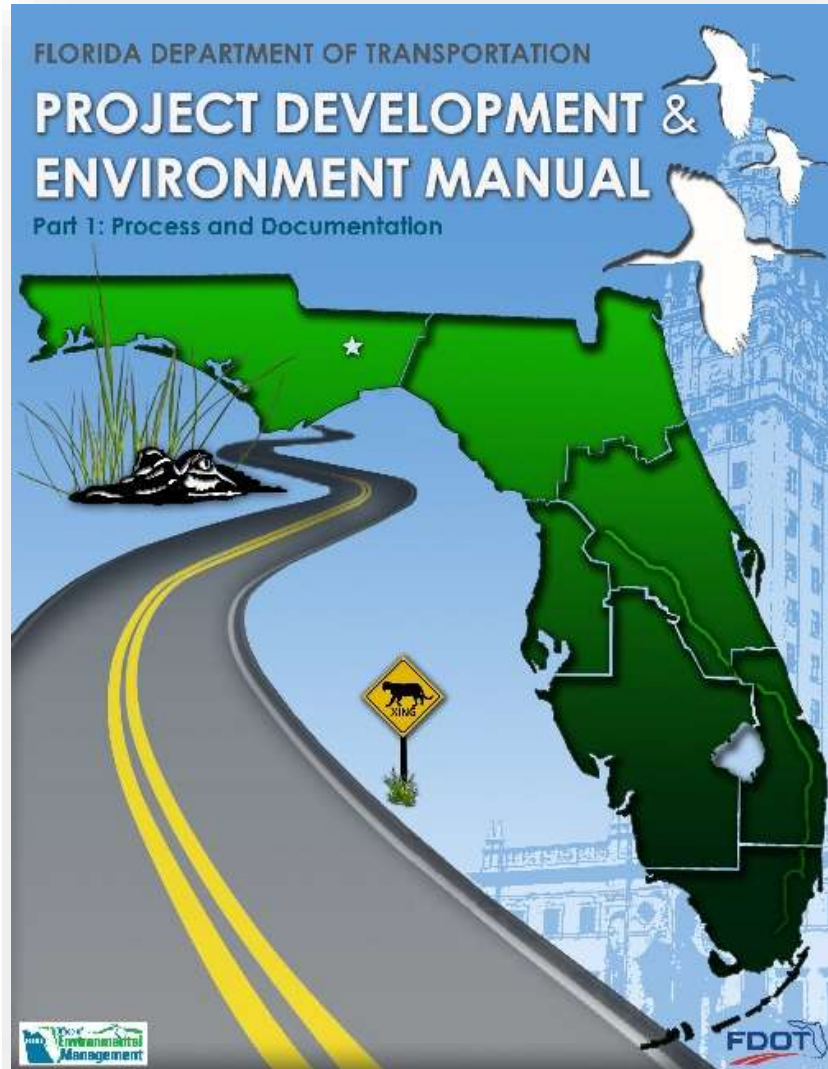
Training & Workforce Development



Our Journey ...



Project Development & Environment Manual



FDOT procedure for conducting and documenting project development and environment (PD&E) studies to comply with environmental laws and regulations.

- Part 1 – Process and Documentation
- Part 2 – Analysis and Documentation

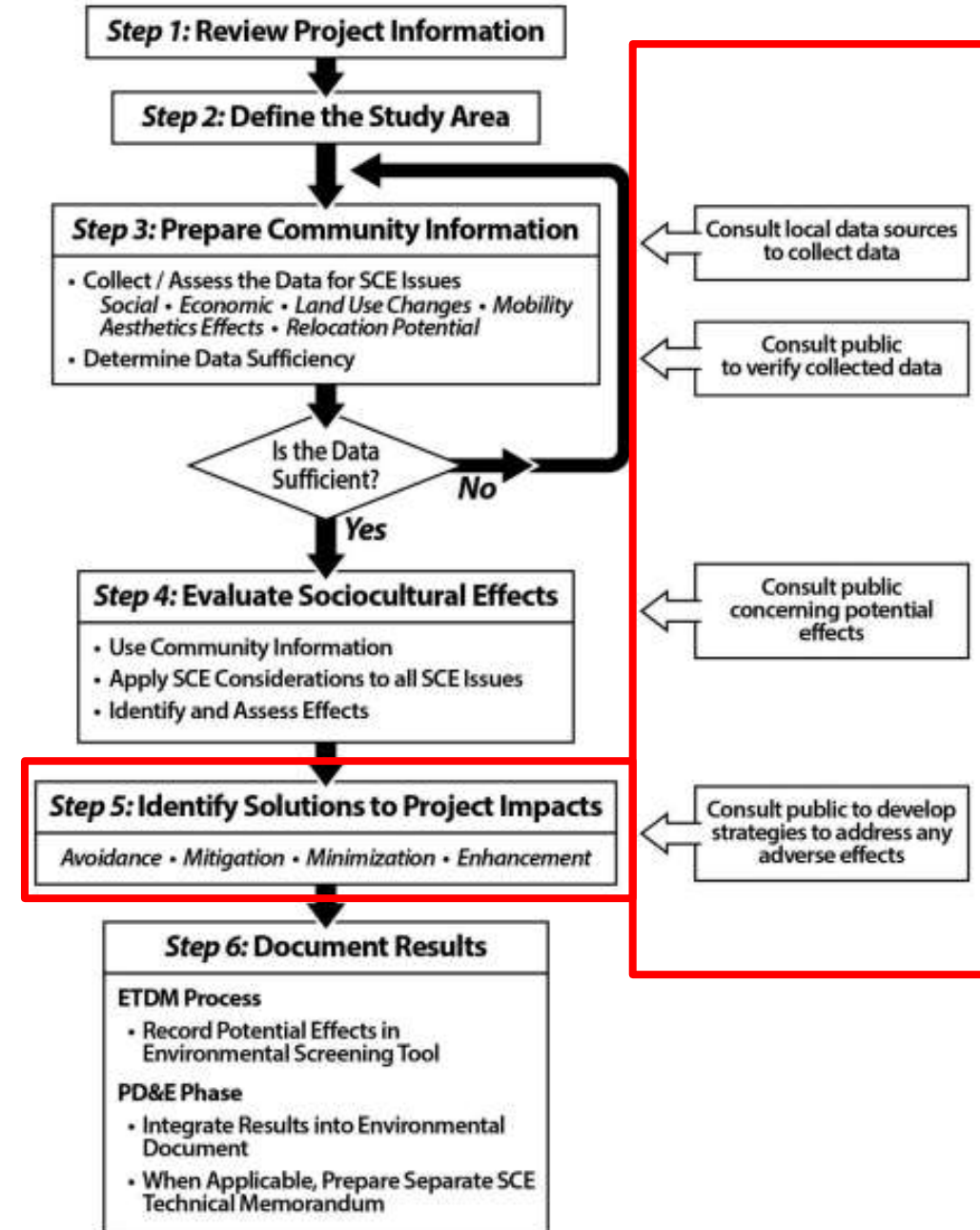
<https://www.fdot.gov/environment/pubs/pdeman/pdeman-current>

Sociocultural Effects Evaluation

- PD&E Manual - Part 2, Chapter 4
- Evaluate potential for project effects on potentially underrepresented population groups protected under:
 - Title VI of the Civil Rights Act of 1964
 - Executive Order 12898 (Environmental Justice)
 - Related nondiscrimination statutes and regulations
- Process is consistent with Environmental Justice Strategy (USDOT, 2016)
 - Avoid, minimize, mitigate disproportionately high and adverse environmental effects on minority and low-income populations
 - Ensure full and fair participation by all potentially affected communities in transportation decision making process
 - Prevent denial of, reduction in, or significant delay in receipt of benefits by minority and low-income populations



Sociocultural Effects Evaluation



StateWide Environmental Project Tracker

Home

StateWide Environmental Project Tracker

Search

OEM Office of Environmental Management
SWEPT StateWide Environmental Project Tracker

My Alerts
My Inbox
Project Input / Setup
Project Documents
Projects Needing Approval
Quality & Performance Management
Team Management
Project Dashboards
Reports
Environmental Permits
Help

Project Dashboards
Project Input / Setup
Project Documents
Quality & Performance Management
Team Management
Environmental Permits

Alerts
You have no alerts at this time.
[See what else is going on in your area](#)

Quick Links
[Project Documents](#)
[Administrative Record](#)

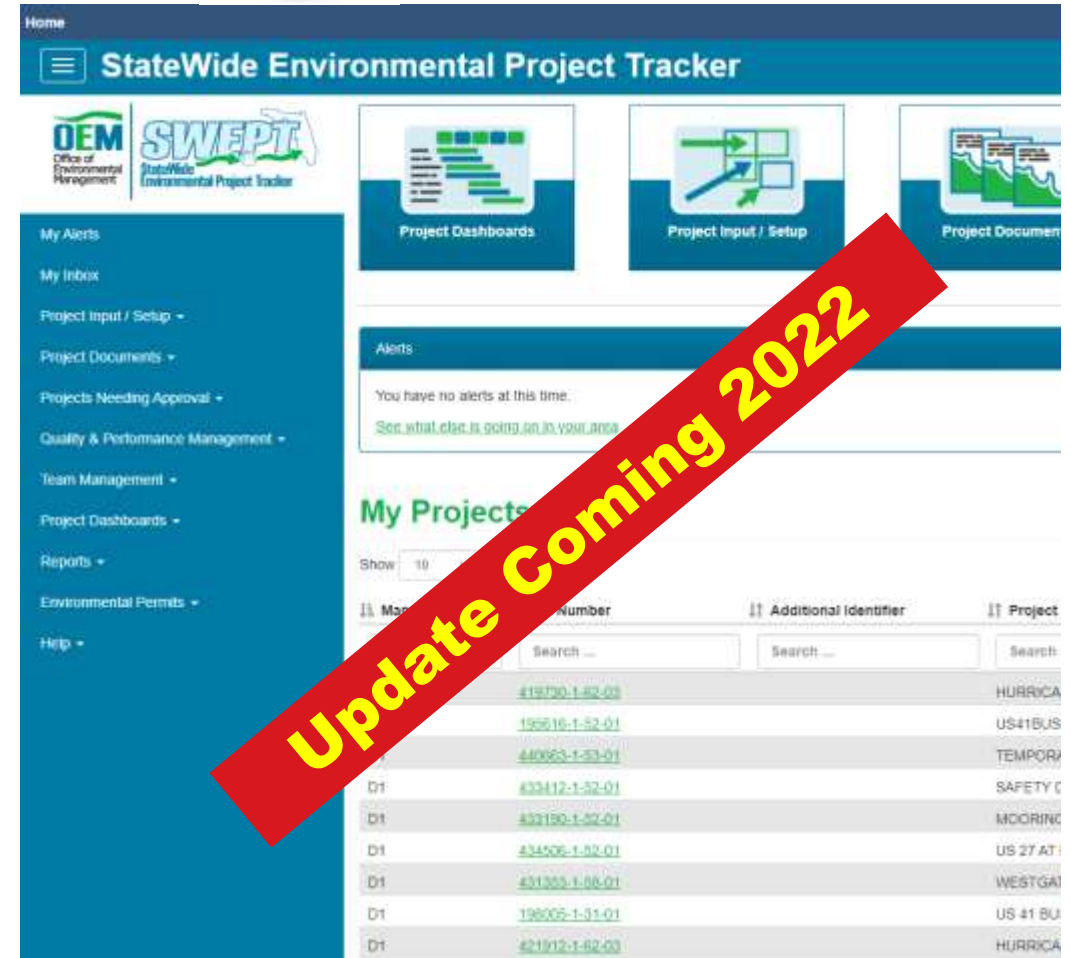
My Projects

Show 10 entries

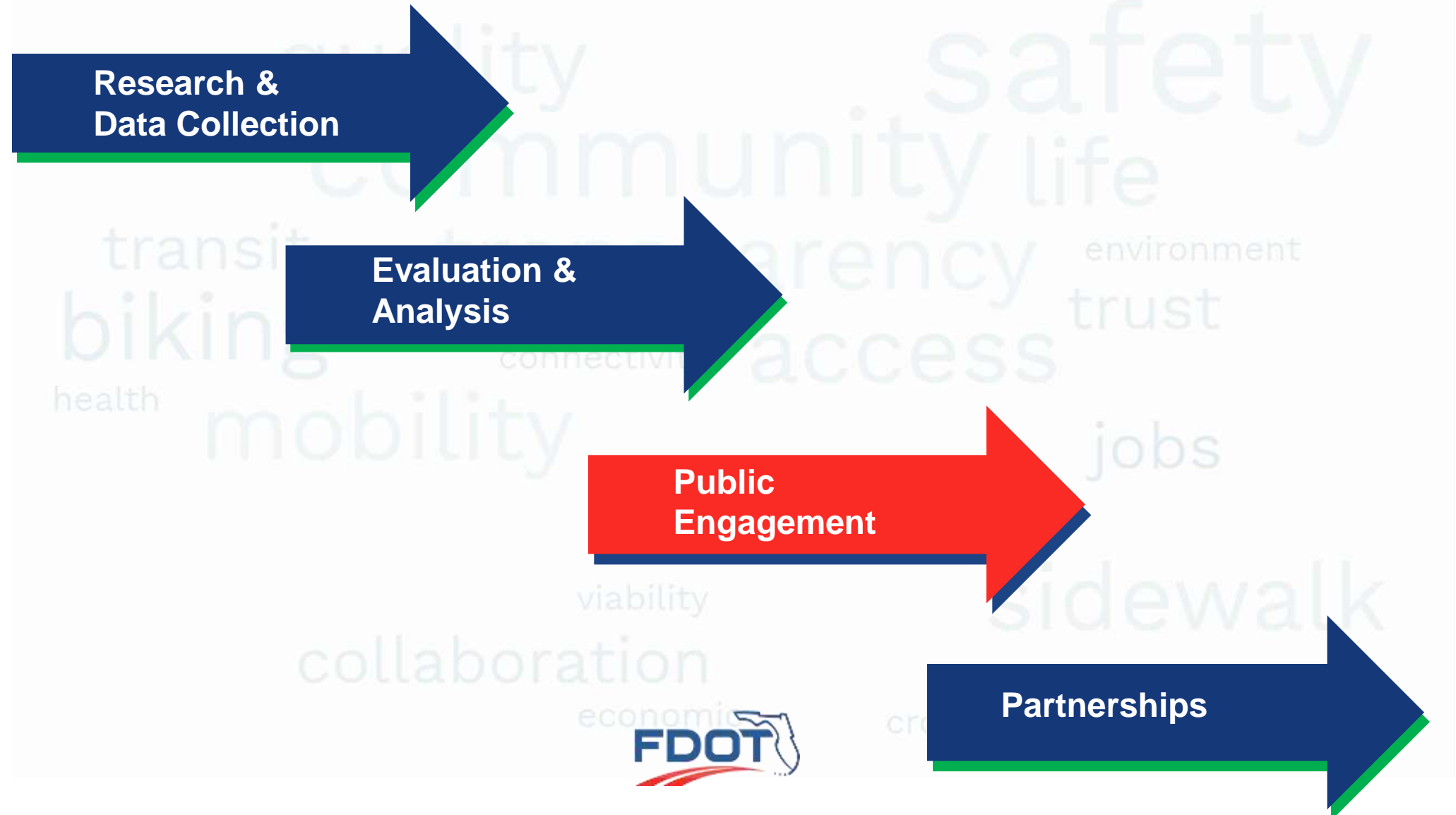
Managing District	FM Number	Additional Identifier	Project Name	COA	County
All	Search ...	Search ...	Search ...	Search ...	Search ...
D1	418730-1-52-03		HURRICANE MATTHEW COUNTYWIDE (09) DISASTER RECOVERY	Type 1 CE	Highlands County
D1	195516-1-52-01		US41BUS(SR 739) S OF NORTH SHORE AVE N OF BECKER DRIVE	Type 1 CE	Lee County
D1	440663-1-53-01		TEMPORARY CURBING DISTRICT WIDE	Type 1 CE	
D1	433412-1-52-01		SAFETY DESIGN BUILD PUSH BUTTON CONTRACT DISTRICT WIDE	Type 1 CE	
D1	433130-1-54-01		MOORING LINE DR FROM BRIDGE #030125 TO US 41	Type 1 CE	Collier County
D1	434506-1-52-01		US 27 AT MAIN ST/CRUMP RD	Type 1 CE	Polk County
D1	401303-1-56-01		WESTGATE-CENTRAL TRAIL FROM ARIANA ST TO CAKHILL STREET	Type 1 CE	Polk County
D1	188005-1-51-01		US 41 BUS FROM PALERMO PLACE TO US 41 BUS (BYPASS N)	Type 1 CE	Sarasota County
D1	421912-1-62-03		HURRICANE MATTHEW COUNTY WIDE (03) DISASTER RECOVERY	Type 1 CE	Collier County

Copy

Upcoming Process Enhancements



Our Journey ...



FDOT Public Involvement Policy



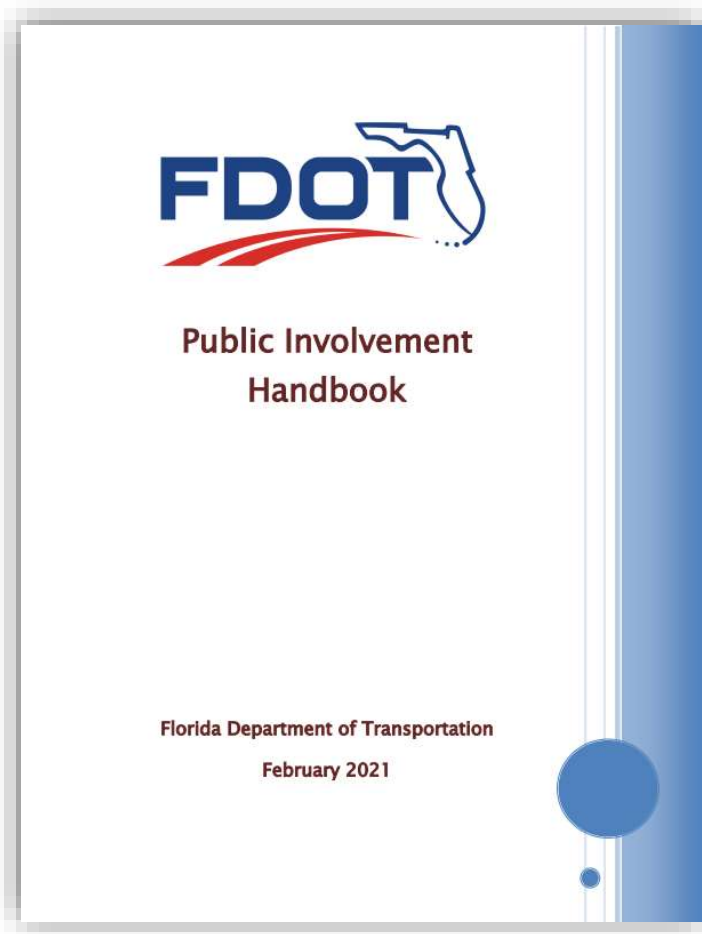
Early and continuous opportunities for public input

Consideration of public needs and preferences

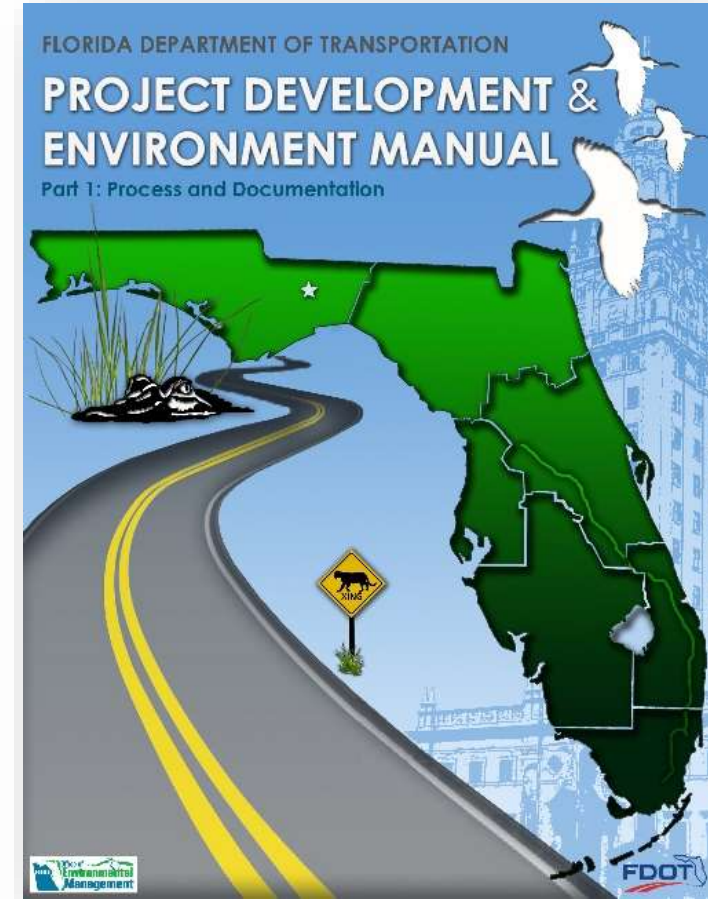
Informed decisions through collaborative efforts

Mutual understanding and trust between the Department and its partners

Public Engagement Resources



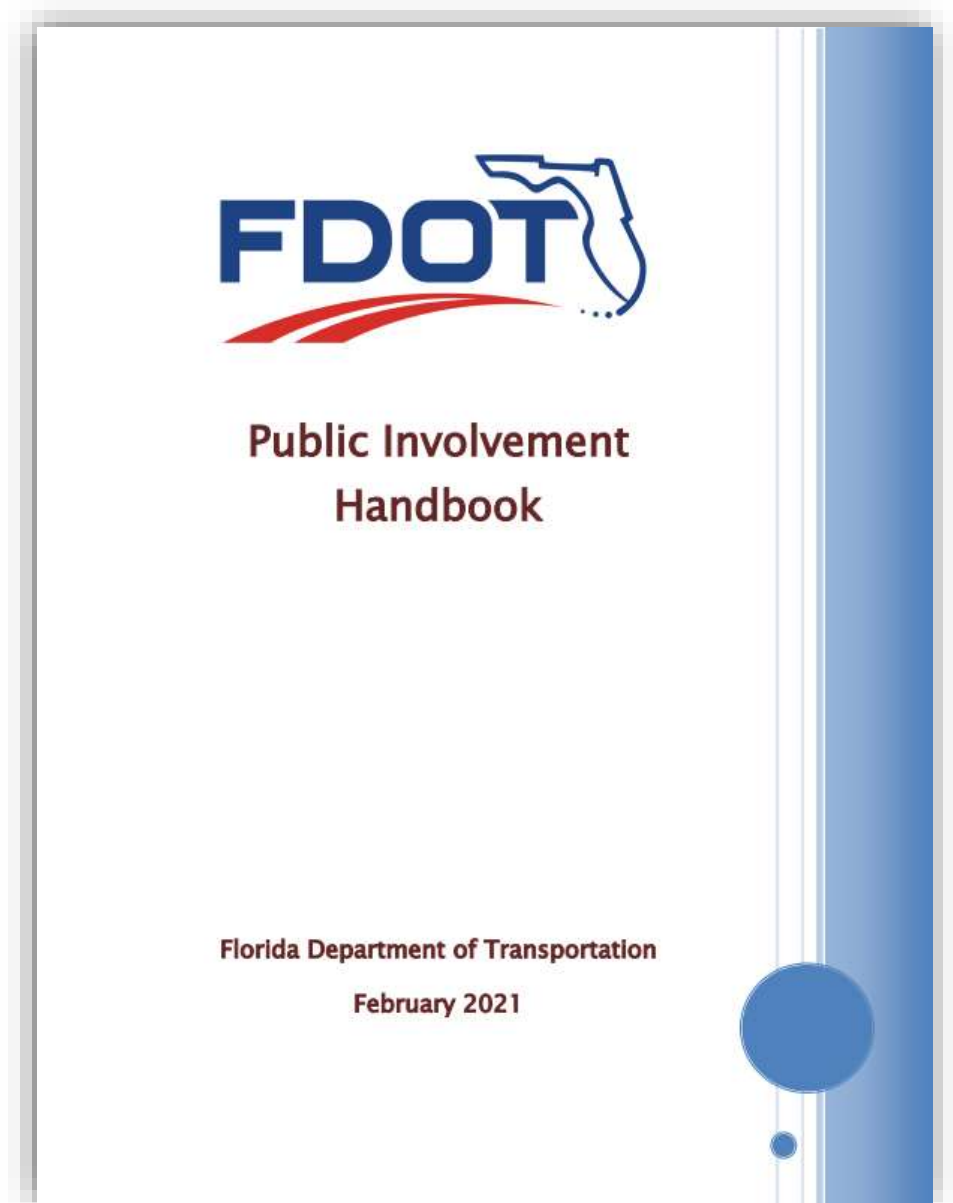
Public Involvement Handbook



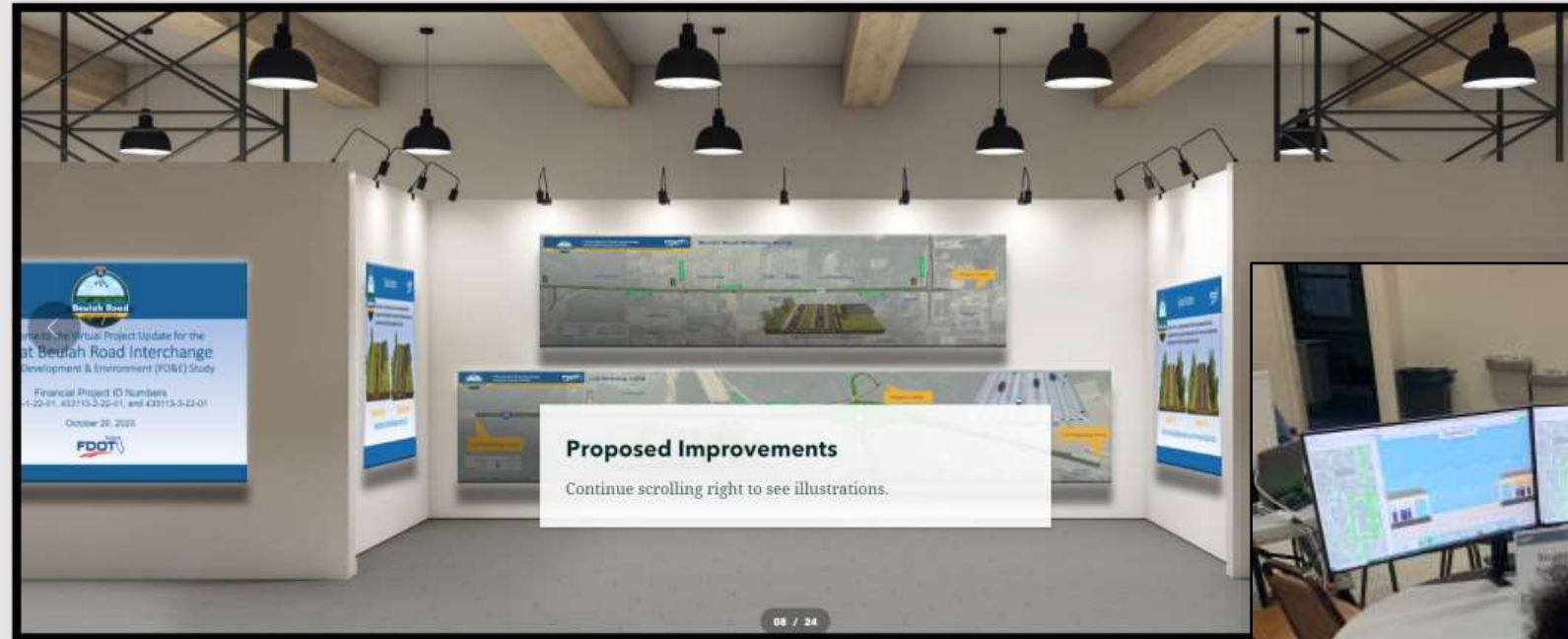
PD&E Manual, Part I, Chapter 11

Public Involvement Handbook

- Federal & State Requirements
- Engaging the public through different project phases
- Tools and Techniques
- Public Meetings/Hearings
- Evaluating effectiveness of engagement
- Maximizing Equity in Transportation



Engaging Through Technology



The Department's Public Involvement Guidance (November 2021) requires all public meetings, hearings, and workshops to be hybrid, using both face-to-face and interactive/virtual components.



Keys to Equitable Outcomes

- Identify affected populations
- Inform affected populations
- Provide opportunity for feedback

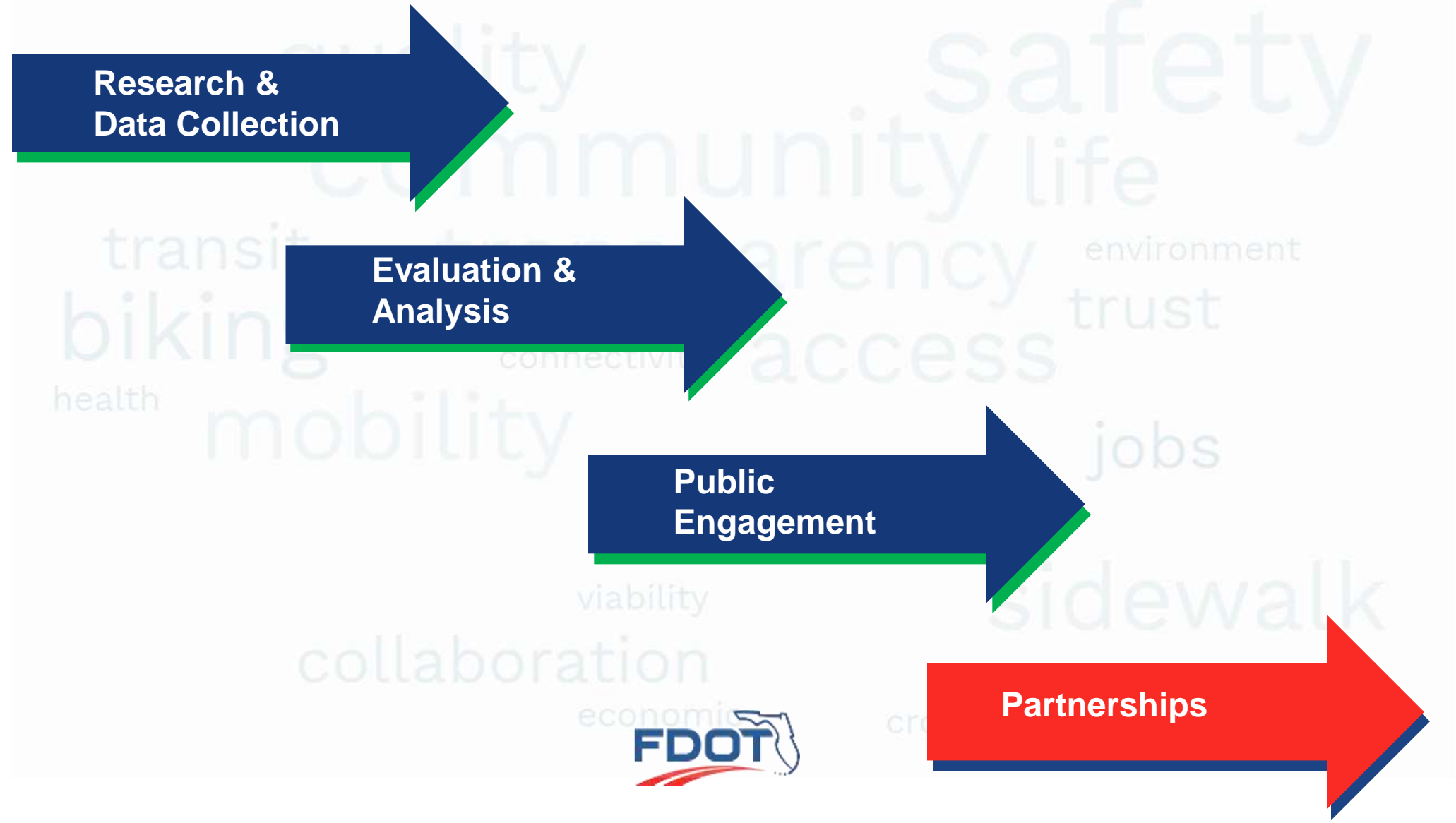


- Was anybody missed?
- Keep the public informed as project progresses
- Plan/Document

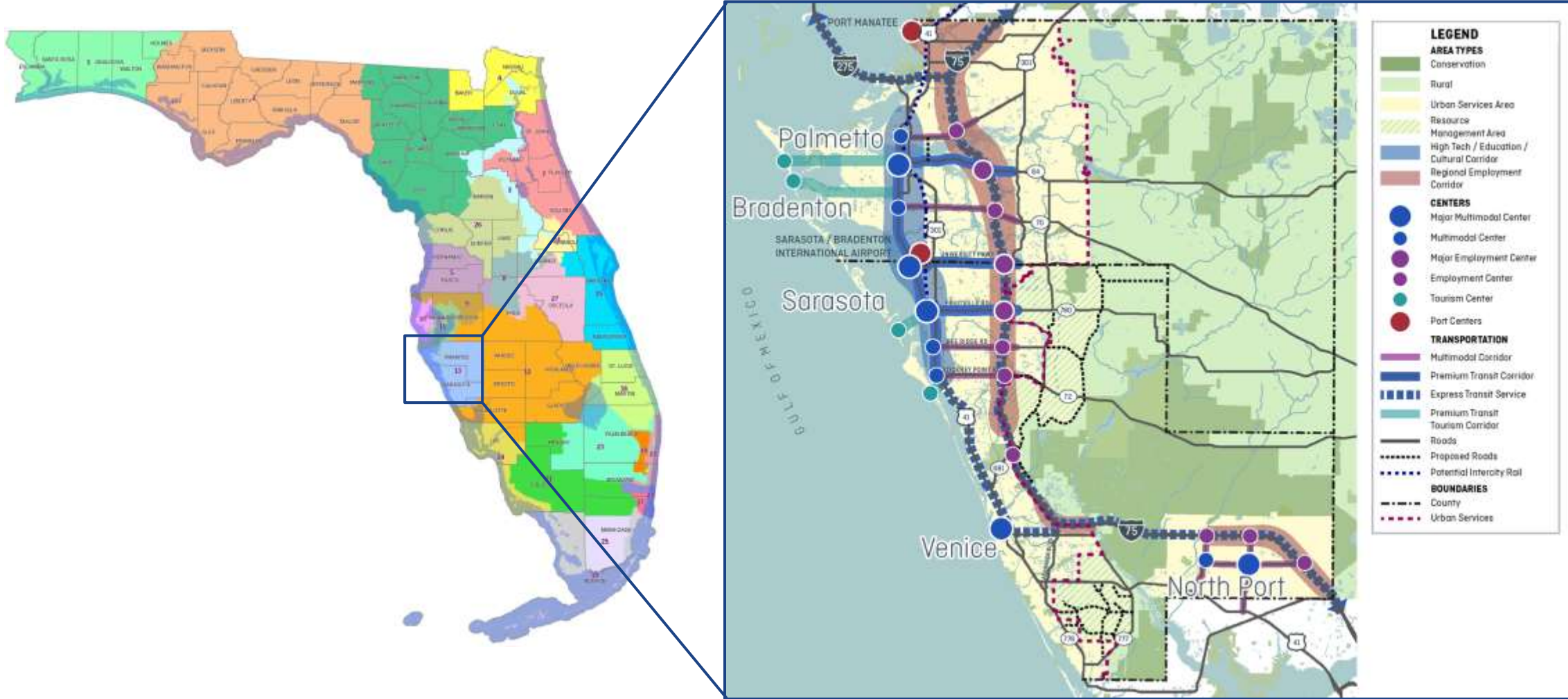
Upcoming Process Enhancements



Our Journey ...



Featured Partner – Sarasota Manatee MPO



Sarasota Manatee MPO LRTP 2045 Vision



Promote economic diversity

Preserve environmental health

Create vibrant places

Sarasota Manatee MPO 2045 LRTP – Equity/Livability

Objectives

Projects shall...



Increase access to bus stops and transfer stations; and availability of park and rides.



Expand access to essential services and affordable housing



Improve access for persons with disabilities



Ensure equity in all transportation decisions

Project Example – Palmetto Trails Network



(Manatee County BUILD Grant Application visualization)

Palmetto Trails Network PD&E Study

Prioritization Factors

Does the project...

Improve access to transit?

Improve access to transit in low-income or minority communities?

Improve access to affordable housing?

Provide access for low income or minority communities?

Provide accessibility for bicycle and pedestrians?

Provide accessibility to food, medical, or education facility?

FDOT Mission:

Provide safe
transportation system

Ensure mobility of people
and goods

Enhance economic
prosperity

Preserve quality of
environment and
community



Palmetto Trails Values:

Provide safe place to
residents to walk and
cross the street

Help residents get to
transit stops and
community areas

Allow for local vendors to sell
wares in community

Rehabilitate the Lincoln Tunnel
(community feature)





Project Development: A Journey in Shared Values

Jennifer Marshall, PE
Director, Office of Environmental Management
Jennifer.Marshall@dot.state.fl.us



Commissioner
Reggie Bellamy

Palmetto Trail and Transportation Options for Economic Development and Community Pride

Presentation for 1000 Friends of Florida



Reggie Bellamy, Commissioner
District 2
April 11, 2022

Topics

Palmetto Trails Project Providing:

- Alternative Transportation Options
- Stimulation for Economic Development
- Community Priorities and Pride



Palmetto Trails Project

History - Long standing needs for connectivity between parks, schools and jobs along with very real safety concerns for pedestrians

Data - \$15.9 million dollar project proposal

Timeline – Planning FY19-25; construction FY25-29

Collaboration through Partnerships

City of Palmetto CRA

FDOT PD&E Study

County Support/Overpass at 17th & US 41/\$2.5 million

State Support / Overpass at 17th & US 41/\$2.5 million

Congressional Support / \$2.9M Funds for Final Design



Alternative Transportation Options Provided by Palmetto Mobility Project:

- New County Transit Stops
- Connectivity to Recreation Parks
- Safe Sidewalks to Schools
- Access to Shopping
- Access to Restaurants



Stimulus Economic Development

Private Business Opportunities

- Vendors (Food trucks, Bike/skate rentals, Fund raising booths)
- Exercise companies and trainers for healthy lives and better quality of life



Community Pride

Revitalization of Historic Lincoln High School
Trojans Tunnel

Connection to Martin Luther King Park

New Aquatic Center and Park Construction

Connections for needed social events and
gatherings



Questions



Bob Cambric
1000 Friends of Florida
Board Member



Jennifer Marshall, PE, Director
Fl. Department of Transportation
Office of Environmental Mgmt.

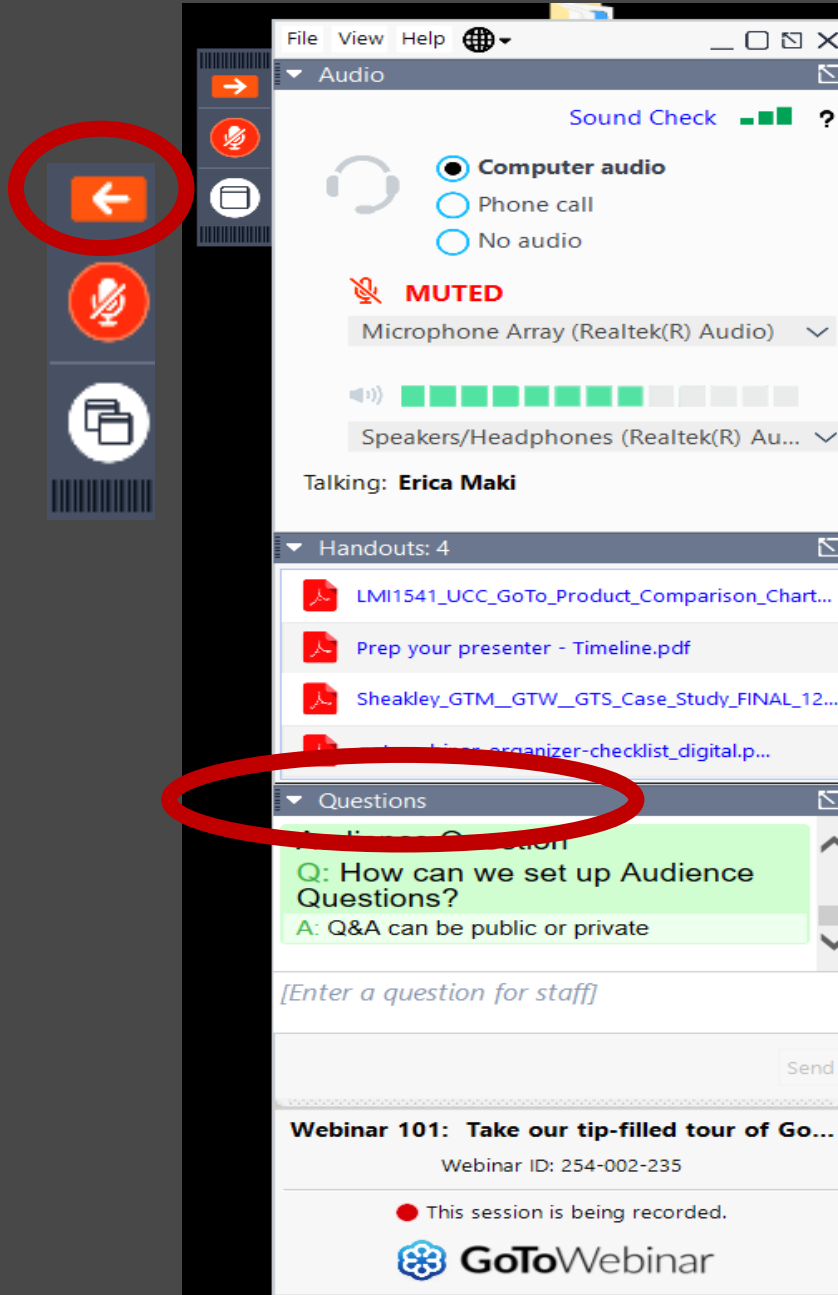


Commissioner Reggie Bellamy
Manatee County Board of
County Commissioners



Vivian Young, AICP
1000 Friends of Florida
Communications Director





Please ask questions!

- Click on arrow at top right of your screen to maximize control panel
- Click arrow next to “Questions” to maximize the questions box
- Please type any questions in this box
- Please refer to the slide number and/or speaker when you post your question
- Please keep your questions succinct!
- Staff will ask the presenters questions, as time permits

This webinar has been approved for credits for:

- *1.5 AICP CM including 1 SOCIAL EQUITY CREDIT (#9230774) for planners*
- *2 CLE including 2 BIAS ELIMINATION CREDITS (2201860N) for Florida attorneys*
- *1 CEC for Certified Floodplain Managers*
- *1 contact hour for Florida Environmental Health Professionals*
- *1.5 hours for Florida Landscape Architects (DBPR course # 0012852).*

*Find credits for past webinars at
1000fof.org/upcoming-webinars/credits*



Follow up survey, certificate and credits:

In the follow up email for the LIVE WEBINAR you will receive:

- A link to a **brief survey** to help us improve future webinars
- A **certificate of attendance** (use Google Chrome to download)

*Information on credits for past webinars are available at
1000fof.org/upcoming-webinars/credits*



For DBPR Landscape Architects



1000 Friends only provides
certificates of attendance for
those who attend the
live webinar

Due to changes in State of Florida
reporting requirements, 1000
Friends will submit your credits
on your behalf



Dr. John M. DeGrove Webinar Sponsors

FRIEND

Mr. Ronald L. Book, PA

Mr. Andy DeGrove

Ms. Kimberly A. DeGrove & Dr. Clyde Partin

Dickman Law Firm

Florida Power & Light Company

William Howard Flowers, Jr. Foundation

Kitson & Partners/Babcock Ranch

Dr. Jim Nicholas

Robert Parks, P.L.

The Perkins Charitable Foundation

Mr. Robert M. Rhodes



Upcoming Webinars

Lessons from the Ocklawaha

Tuesday, May 17, 2022, Noon to 1:30 p.m. Eastern

Find out more and register at
1000fof.org/upcoming-webinars



Support 1000 Friends!

DONATE

at www.1000fof.org/donate

(you may designate it for DeGrove Education Fund if you wish)

SPONSOR

the DeGrove webinars by emailing
vyoung@1000fof.org to find out more

AMAZON SMILE

will make a donation to 1000 Friends
every time you purchase through
smile.amazon.com/ch/59-2761163



Questions



Bob Cambric
1000 Friends of Florida
Board Member



Jennifer Marshall, PE, Director
Fl. Department of Transportation
Office of Environmental Mgmt.



Commissioner Reggie Bellamy
Manatee County Board of
County Commissioners



Vivian Young, AICP
1000 Friends of Florida
Communications Director

