



Florida 2070

Audio Options

TO USE YOUR COMPUTER'S AUDIO:

When the Webinar begins, you will be connected to audio using your computer's microphone and speakers (VOIP)

TO USE YOUR TELEPHONE:

If you prefer to use your phone, select "Use Telephone" after joining the webinar.





1000 Friends of Florida Thanks the Sponsors of the Dr. John M. DeGrove Webinar Series

FLORIDA STEWARD

The Archibald Foundation, Inc.

FLORIDA GUARDIAN

Frank Schnidman,

John M. DeGrove Eminent Scholar Chair,

Florida Atlantic University

PRESIDENT'S CLUB

Mosaic Fertilizer, LLC

FRIEND

Cobb Cole

Codina Management, LLC

Ms. Kimberly A. DeGrove and Dr. William Partin

William Howard Flowers, Jr. Foundation

Kitson Evergreen, LLC

Law Offices of Robert L. Parks, P.L.

The Perkins Charitable Foundation

Mr. Robert M. Rhodes



FLORIDA 2070



1000 Friends of Florida Thanks the Sponsors of the Dr. John M. DeGrove Webinar Series

SPONSOR

Ronald Book, PA
Cambridge Systematics
Mr. William M. De Grove

SUPPORTER

American Planning Association,
Florida Chapter
Mr. Thomas J. Baird
Mr. David M. Orshefsky
Ms. Nancy Ellen Stroud
Tallahassee State Bank
Thomson Brock Luger & Company
Treasure Coast RPC
Mr. & Mrs. Peter R. and Helen Wallace



Dr. John M. DeGrove





This Webinar Has Been Approved for:

- 1.5 AICP CM credits for planners ([#9109124](#))
- 2 CLE credits for the Florida Bar ([#1606408N](#))
- 1 CEC for Certified Floodplain Managers
- .15 CEU for certified environmental health professionals





Upcoming Dr. John M. DeGrove Webinars

Coming Soon – Water 2070!

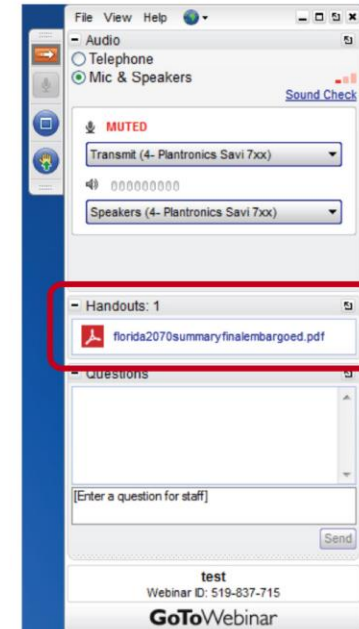
Visit www.1000friendsofflorida.org/webinar
to find out more!





The PowerPoint and materials
are available at

www.1000friendsofflorida.org/florida2070

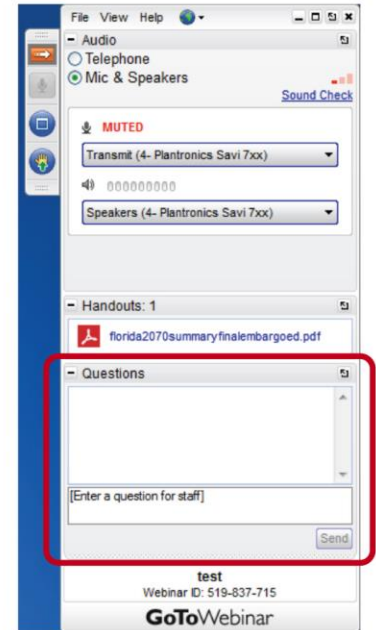


FLORIDA 2070



If you have questions:

- Your webinar control panel includes a “Questions” box
- Please click on “+” sign and type any questions in this box
- Please refer to the slide number and/or speaker when you post your question
- We will do our best to answer all questions as time permits





Project partners and panelists:

1000 Friends of Florida

Founded in 1986, 1000 Friends of Florida is a 501(c)(3) not-for-profit organization that focuses on saving special places and building better communities in one of the fastest growing states in the nation. Visit www.1000friendsofflorida.org for more information on 1000 Friends.

Panelists

Vivian Young, *AICP, Communications Director*

Ryan Smart, *President*



Project partners and panelists:

The **Florida Department of Agriculture and Consumer Services** supports and promotes Florida agriculture, protects the environment, safeguards consumers, and ensures the safety and wholesomeness of food. Our programs and activities are so varied and extensive, they touch the life of just about every Floridian. For more information please visit www.freshfromflorida.com.

Panelists

Cori Hermle, *Environmental Consultant, Office of Agricultural Water Policy, Florida Department of Agriculture and Consumer Services*



UF | GeoPlan Center

Project partners and panelists:

Established in 1984, **Geoplan** is a multidisciplinary GIS laboratory located in the University of Florida's School of Landscape Architecture and Planning, College of Design, Construction and Planning. It was developed in response to the need for a teaching and research environment for Geographic Information Systems, or GIS. Under its auspices spatial analysis is conducted in support of a broad range of academic disciplines. Additional information is available at www.geoplan.ufl.edu.

Panelists

Margaret H. Carr, *Professor, Department of Landscape Architecture, University of Florida*

Paul D. Zwick, Ph.D., *Professor, Department of Urban and Regional Planning, University of Florida*

**There is no other
Florida.**

Sandy beaches,
crystalline springs,
piney flatwoods,
coastal dunes,
mangrove swamps,
salt marshes, the
Everglades and more
– Florida is home to
some of the nation's
most iconic landscapes.



*Sunrise over a salt marsh on the Nature Coast
Mac Stone Photography*

Florida's lands and waters provide us with abundant recreational opportunities.

They are a cornerstone of this state's economy, attracting more than 100 million tourists each year.



*Sweetwater Spring in Marion County
David Moynahan Photography*

These natural areas shelter and sustain the vast array of flora and fauna that call Florida home.

They also protect and cleanse our drinking water.



Florida's rich soils and warm climate make this state a leader in agricultural production.

Florida is a major producer of fruits, vegetables, and livestock.

Agriculture is the second largest contributor to Florida's economy after tourism.



But we are losing
Florida's natural and
agricultural lands.

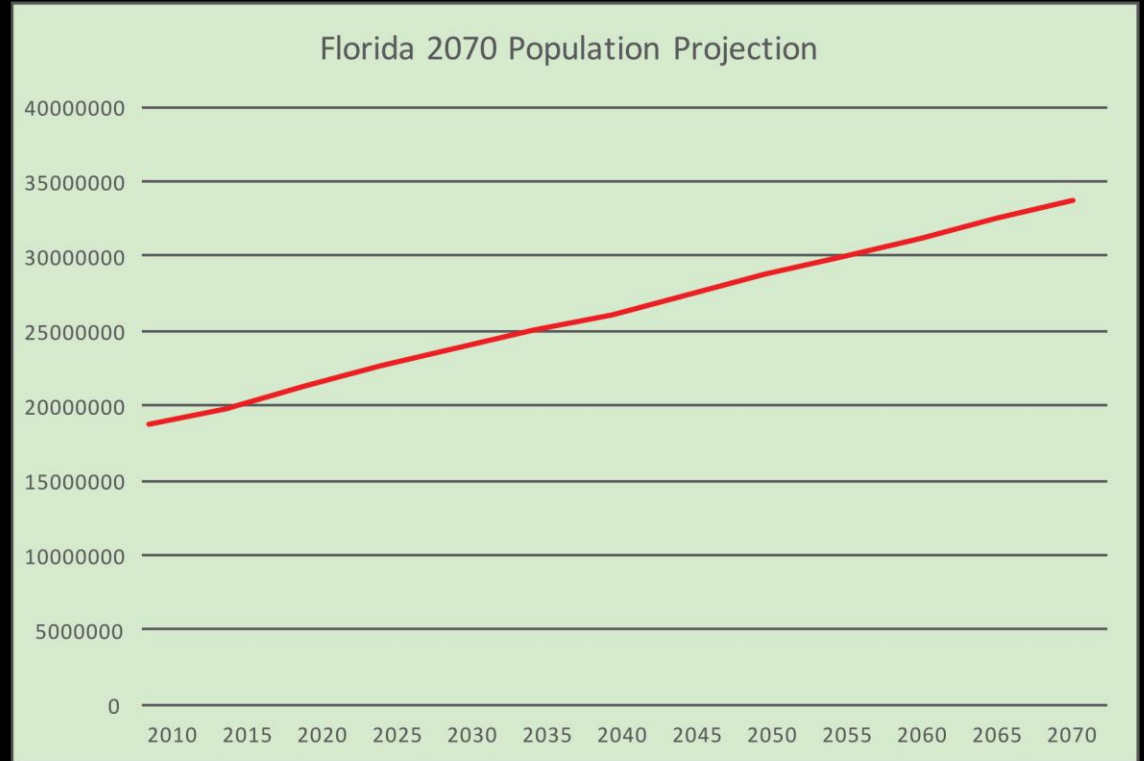
More than 1000
people move to
Florida every day.

And in 2014, Florida's
population surpassed
that of New York,
making it the third
largest state in the
nation.



Using moderate projections, by 2070, Florida is expected to have 33.7 million residents, about 15 million more than it had in 2010.

This growth has significant impacts on Florida's lands, waters, roads, and quality of life.



Currently Florida is accommodating population increases roughly the equivalent of a new City of Tampa every year.

This raises fundamental questions:



Reprinted with permission of The Tampa Bay Times.
All Rights Reserved.

Where will future residents work and live?



Or here?



Top: Anywhere, Florida
Bottom: Baldwin Park near Orlando
Image provided by: YourOrlando.com

What impact will this have on Florida's natural areas?

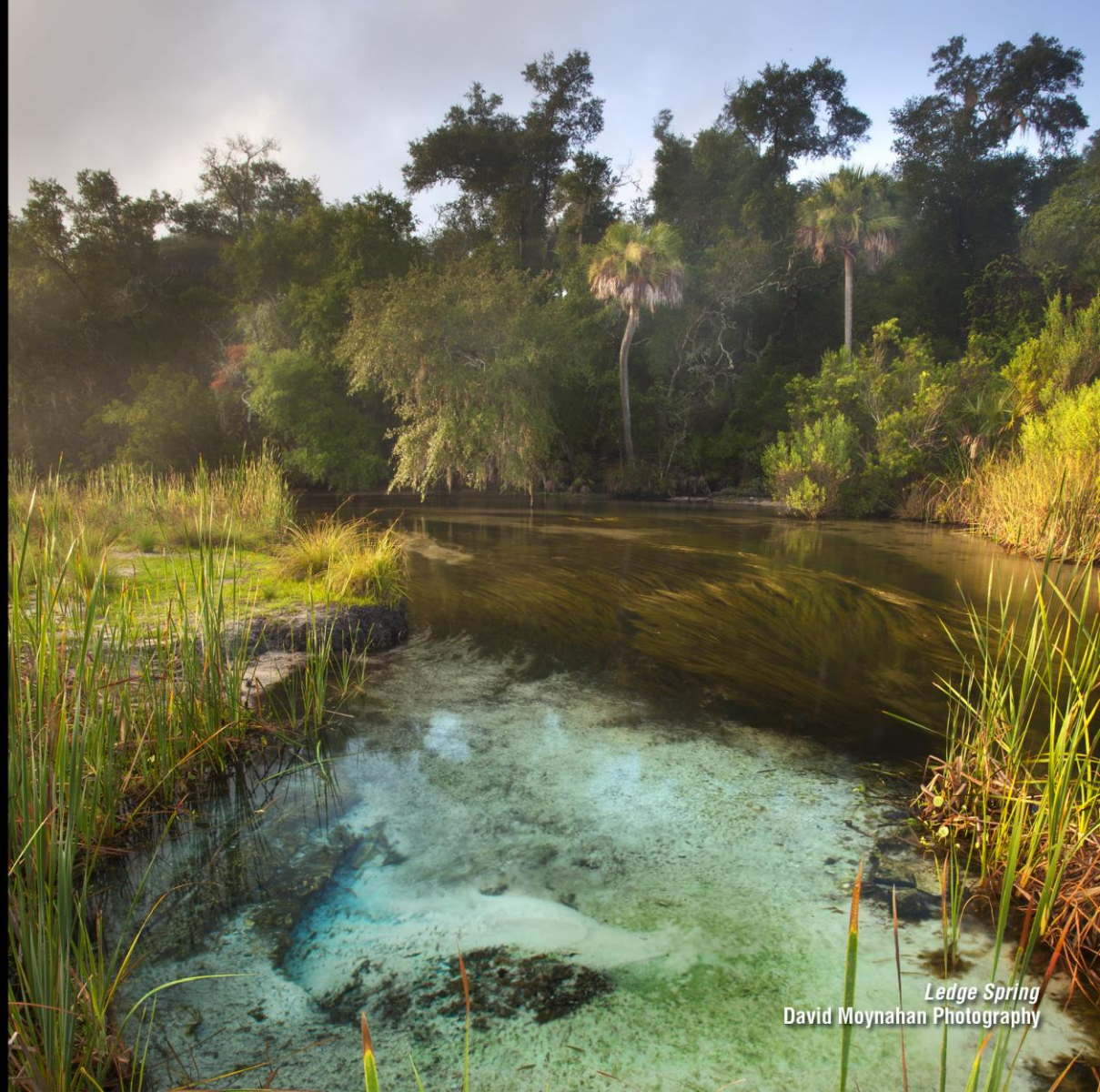


How can we keep
agricultural lands in
production?



2008 Ag-Environmental Leadership
Award, Brock Family Farm in Monticello
Florida Department of Agriculture and
Consumer Services

What can be done
to safeguard
Florida's waters and
the lands that
protect them?



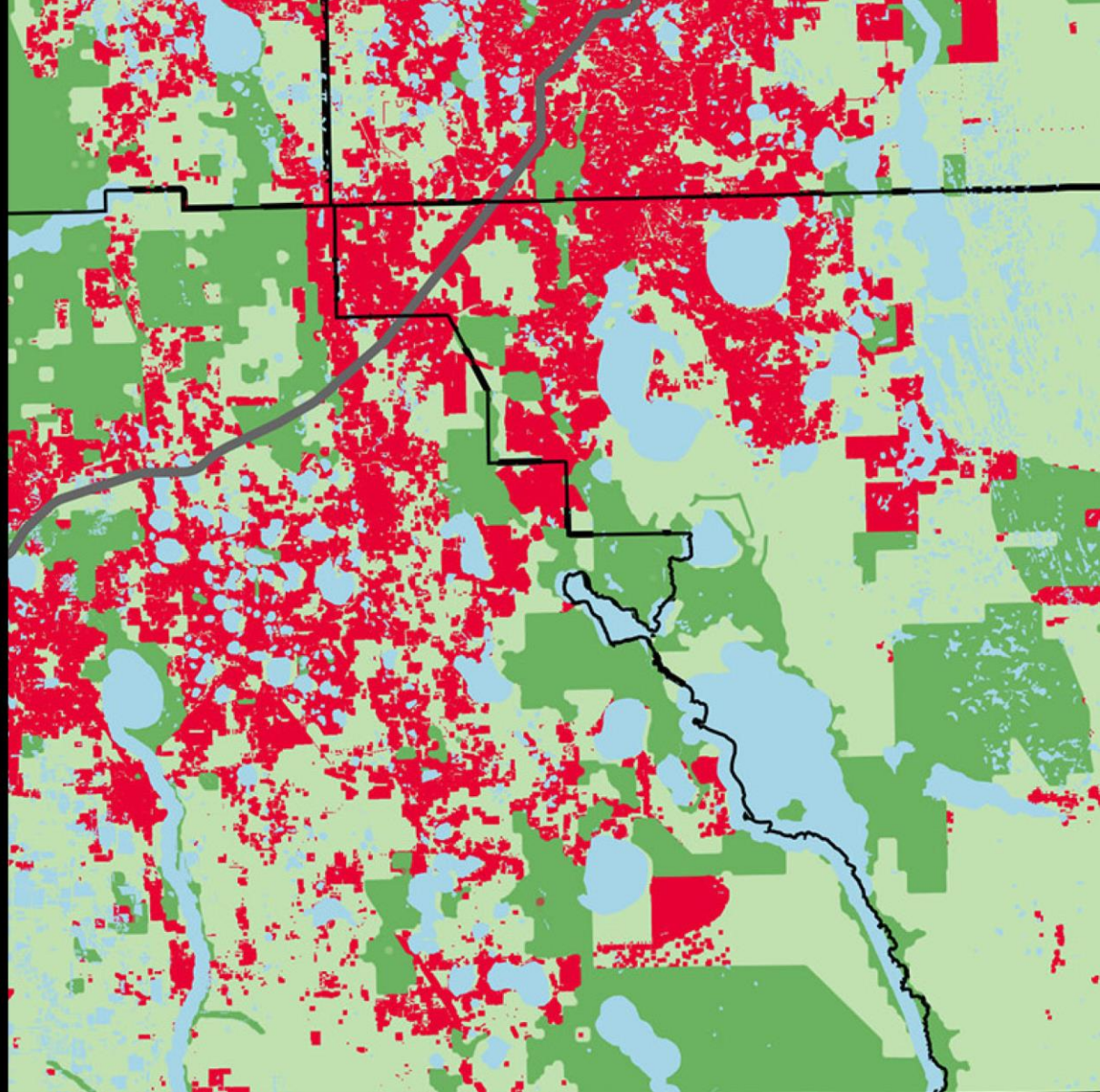
Ledge Spring
David Moynahan Photography

How can we promote vibrant, walkable communities with livable neighborhoods to enhance our quality of life?



*Laura Street in Downtown Jacksonville
Ryan Ketterman for Visit Jacksonville*

To find answers, 1000 Friends of Florida, the University of Florida's GeoPlan Center, and the Florida Department of Agriculture and Consumer Services have prepared *Florida 2070*.

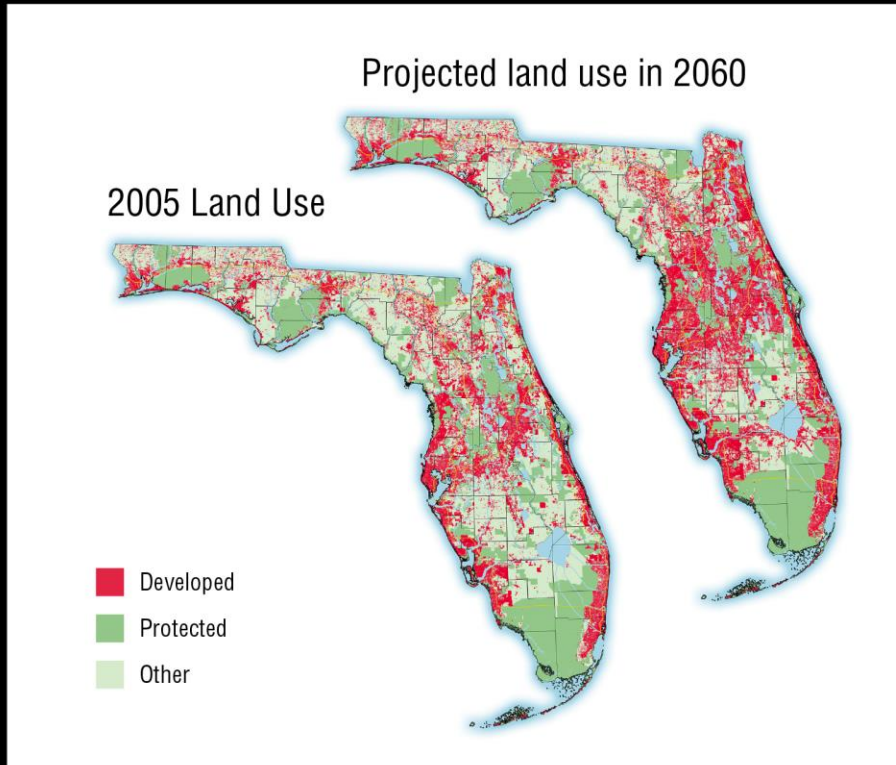




THE 2070 PROJECT



Based on an Update and Expansion of Florida 2060 Estimates

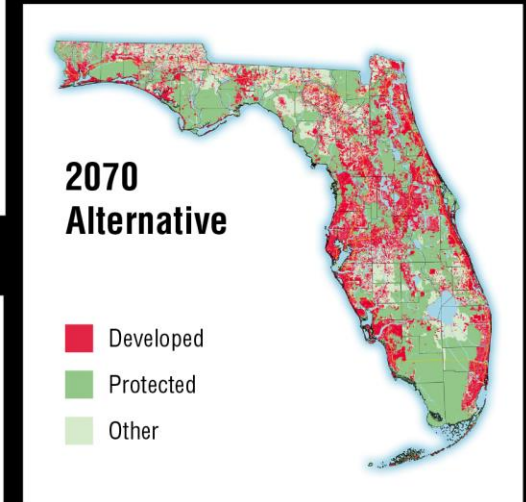
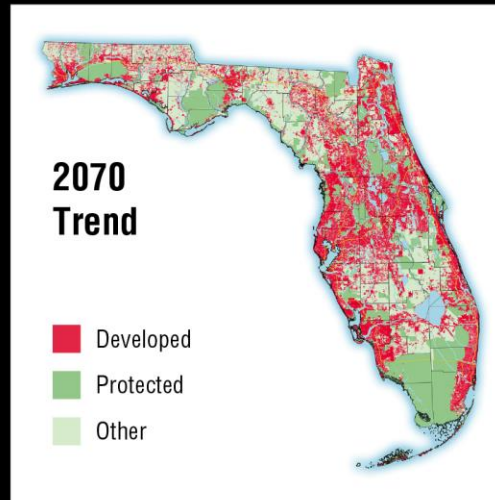
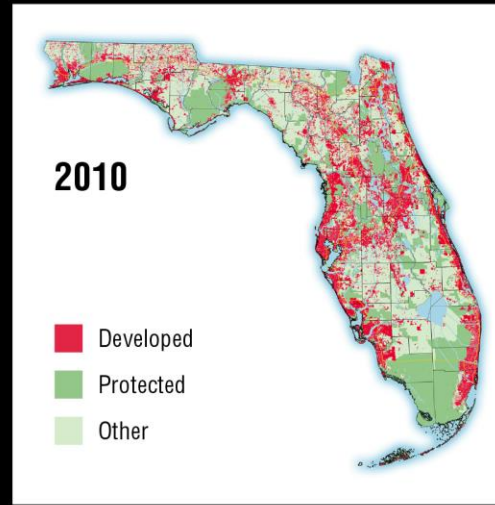


- Population projections have changed – the projected 2070 population growth has decreased from previous 2060 estimates...but nearly 15 million additional residents are still anticipated.
- Florida 2060 compared the 2005 land use pattern with a 2060 Trend scenario.
- Florida 2070 compares the 2010 land use pattern with both 2070 Trend and 2070 Alternative scenarios.
- Data inputs and modeling methodology were updated for Florida 2070, including adding productive agricultural soils as a criterion in the suitability analysis.
- The soils data were provided by the Florida Department of Agriculture and Consumer Services from the Balmoral Group's study, *Florida Statewide Agricultural Irrigation Demand* (2015).

Florida 2070

This map series depicts Florida:

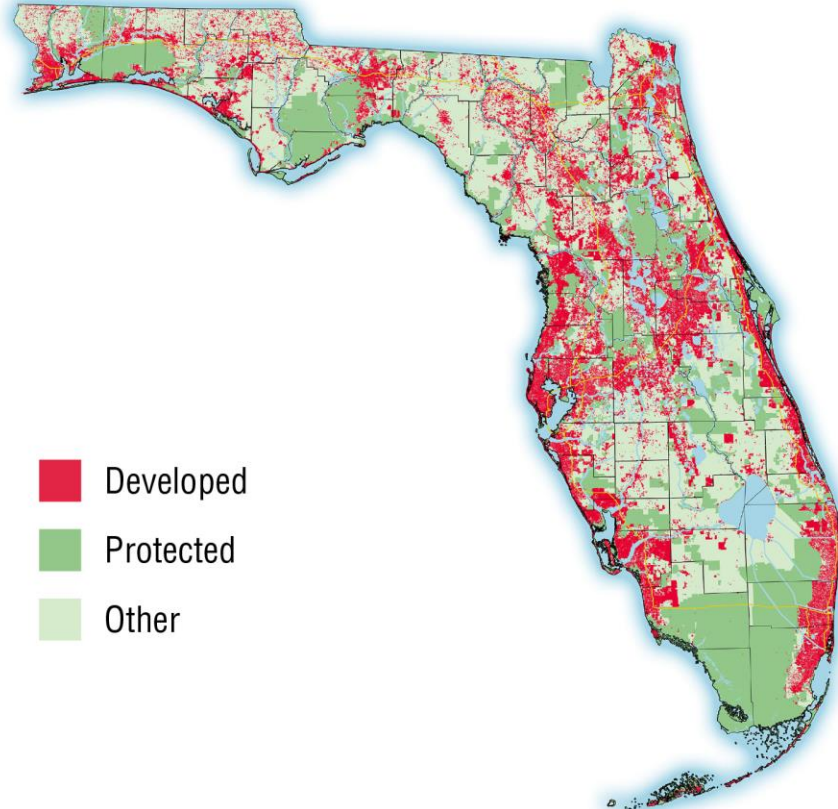
- In 2010
- In 2070 [Trend] if we keep developing the same way
- In 2070 [Alternative] with more compact communities, protected natural areas, and agricultural lands in production



At the time of the U.S. Census in 2010, Florida had:

- 18.8 million residents
- 6.4 million acres of developed lands
- 9.95 million acres of protected lands (excluding agriculture)
- 920,000 acres of protected agricultural lands
- 7.5 million acres of agricultural lands (excluding timber)
- 9.5 million acres of other undeveloped lands

Development in 2010





TREND 2070



Trend 2070

What happens if current patterns of development remain the same in 2070?

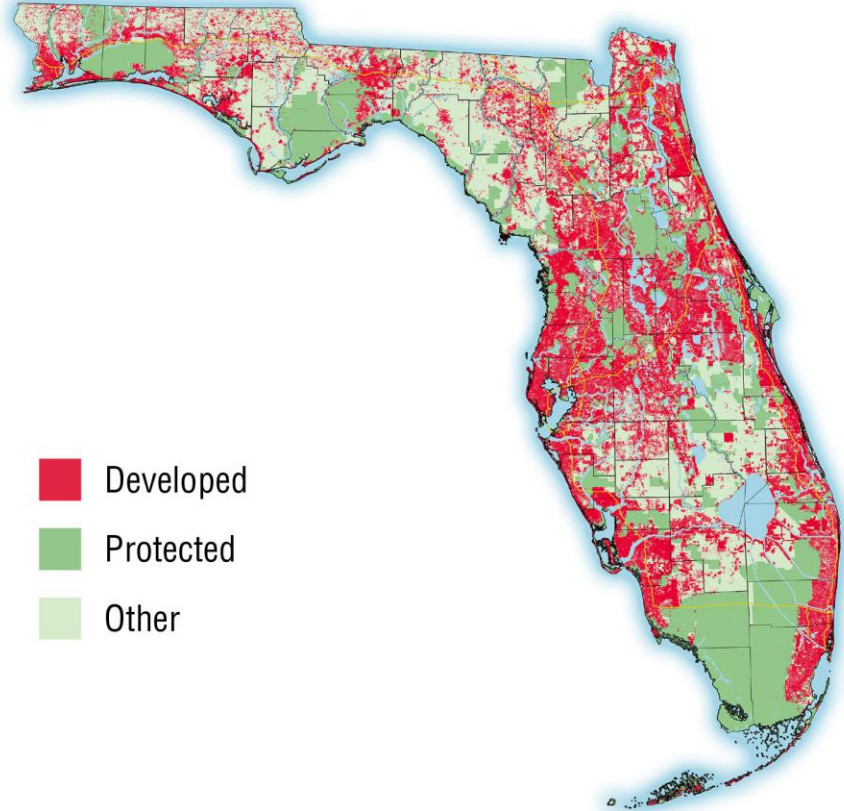
Assumptions for Trend 2070

- Population growth between 2010 and 2070 is based on Florida Bureau of Economic and Business Research (BEBR) medium range projection (approximately 15 million new residents)
- Gross development density of developed lands in each county remains the same as in 2010
- No new conservation lands are added
- A set of weighted criteria are used to determine lands most suitable for new development, based on:
 - Proximity to existing urban areas
 - Absence of wetlands
 - Absence of good agricultural soils
 - Road density
 - Proximity to coastline
 - Existence of approved Developments of Regional Impacts and Sector Plans
 - Proximity to major roads
 - Proximity to major urban areas
 - Proximity to open water

What happens if new development follows current trends and continues to sprawl at low densities?

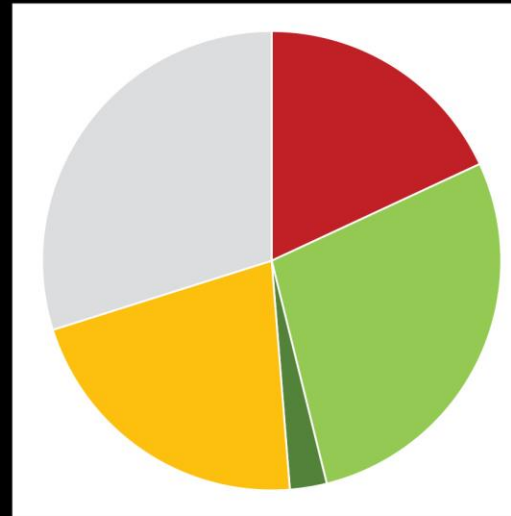
By 2070, roughly 5 million acres (including 3 million acres of Florida's agricultural and natural lands) could convert to urban use to accommodate approximately 15 million new residents

Trend 2070

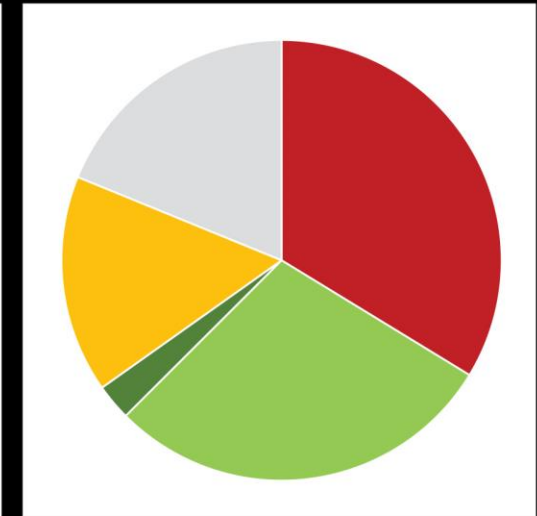


If current development patterns continue, the Florida 2070 trend scenario will have:

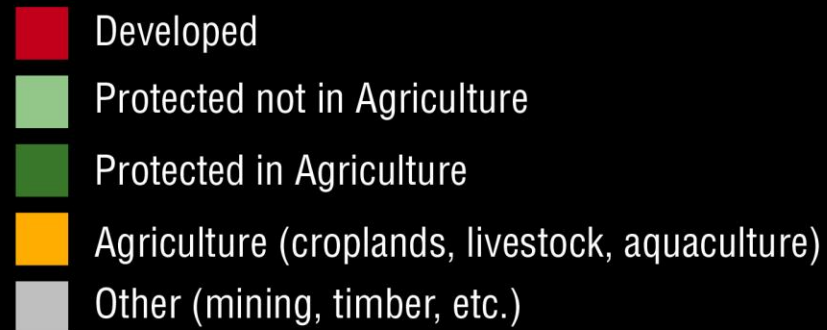
- 33.7 million residents
- 11.6 million acres of developed lands
- 9.95 million acres of protected lands (excluding agriculture)
- 920,000 acres of protected agricultural lands
- 6.4 million acres of agricultural lands (excluding timberlands)
- 6.5 million acres of other undeveloped lands (including timberlands)



2010



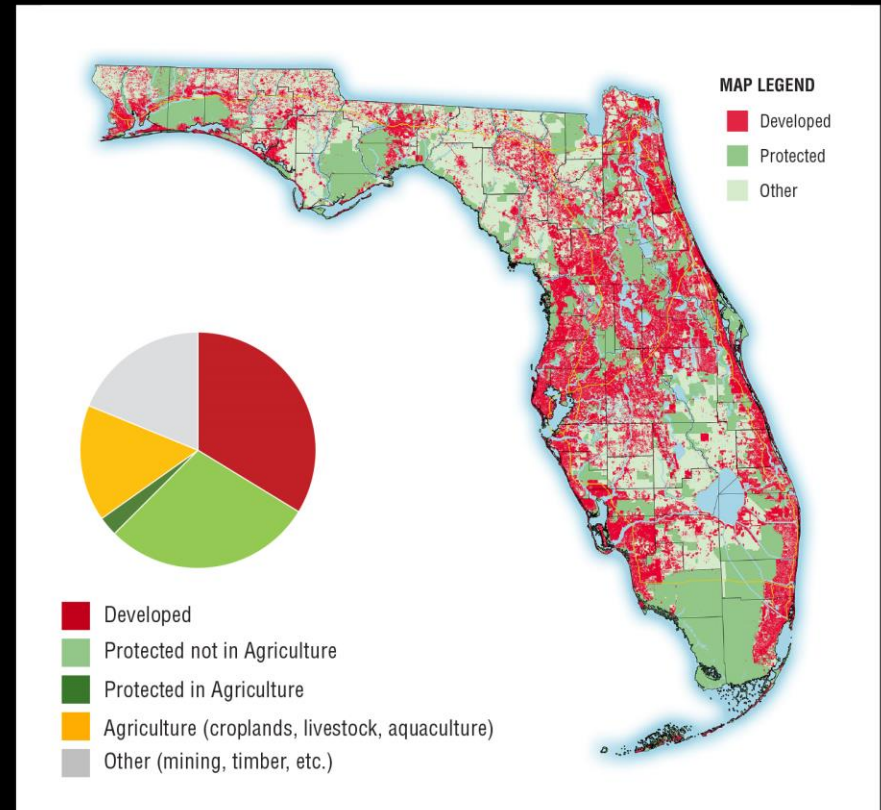
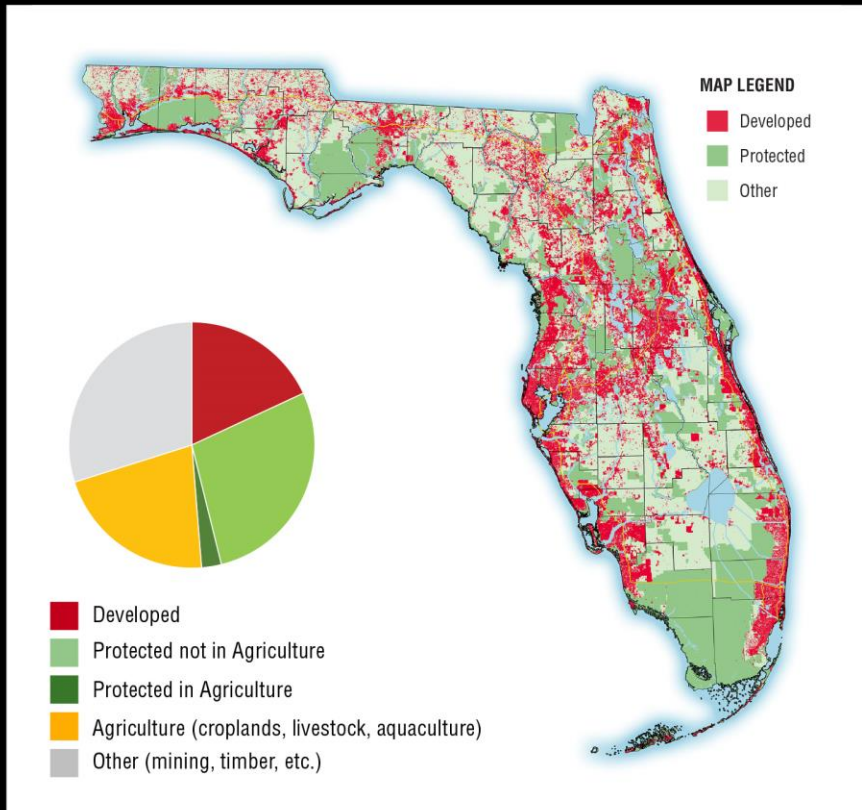
Trend 2070



Let's Take a Closer Look

Florida 2010

Trend 2070



2010 Baseline and 2070 Trend Scenario Acreage Comparisons

	Baseline	% of Land	Trend	% of Land
Developed	6,412,000	18.56%	11,647,716	33.72%
Protected (excluding agriculture)	9,950,000	28.80%	9,950,000	28.80%
Protected Agriculture	920,000	2.66%	920,000	2.66%
Protected Subtotal	10,870,000	31.47%	10,870,000	31.47%
Agriculture (croplands, livestock, aquaculture)	7,518,267	21.76%	5,520,237	15.98%
Agriculture Subtotal	8,438,267	24.43%	6,440,237	18.64%
Other (mining, timber, etc.)	9,742,733	28.20%	6,505,047	18.83%
Total State Land Acres	34,543,000	100.00%	34,543,000	100.00%



ALTERNATIVE 2070

Using conservation strategies



Alternative 2070

What happens in 2070 if new development is more compact, important conservation lands are protected, and good agricultural lands aren't developed?

Assumptions for Alternative 2070

Same as Trend 2070:

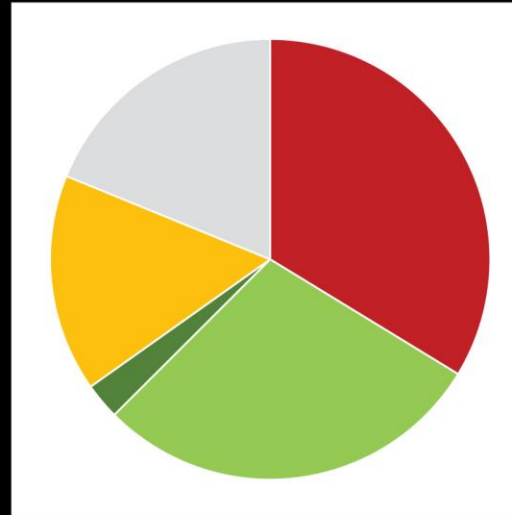
- Population growth between 2010 and 2070 based on BEBR medium range projection (approximately 15 million new residents)
- A set of weighted criteria are used to determine lands most suitable for new development, using the same criteria as Trend 2070.

Different from Trend 2070:

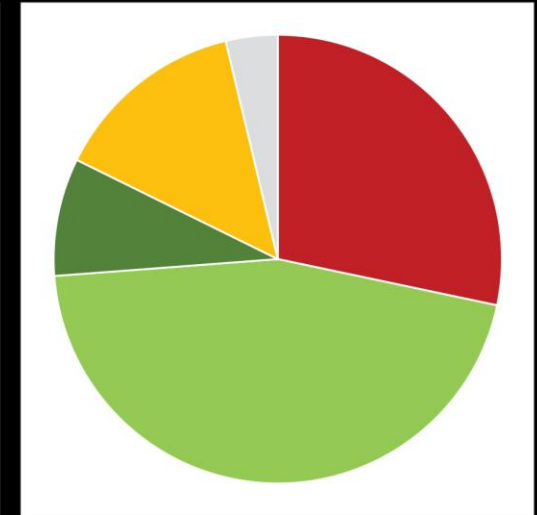
- A portion of each county's projected population growth was accommodated within existing urban areas, with urbanized counties projected to have greater urban redevelopment than rural counties.
- The gross development density used to predict each county's new development was increased 20% over the gross development density used in the Trend.
- Existing Florida Forever Acquisition projects and lands identified as Priorities 1 & 2 in the Florida Ecological Greenways Network were added to conservation lands.

In 2070, if the Alternative scenario is followed instead of the Trend, Florida will:

- Save 1.8 million acres of land from development
- Save an additional 5.8 million acres of conservation lands
- Keep 1.3 million more acres of agricultural lands in production



Trend 2070



Alternative 2070



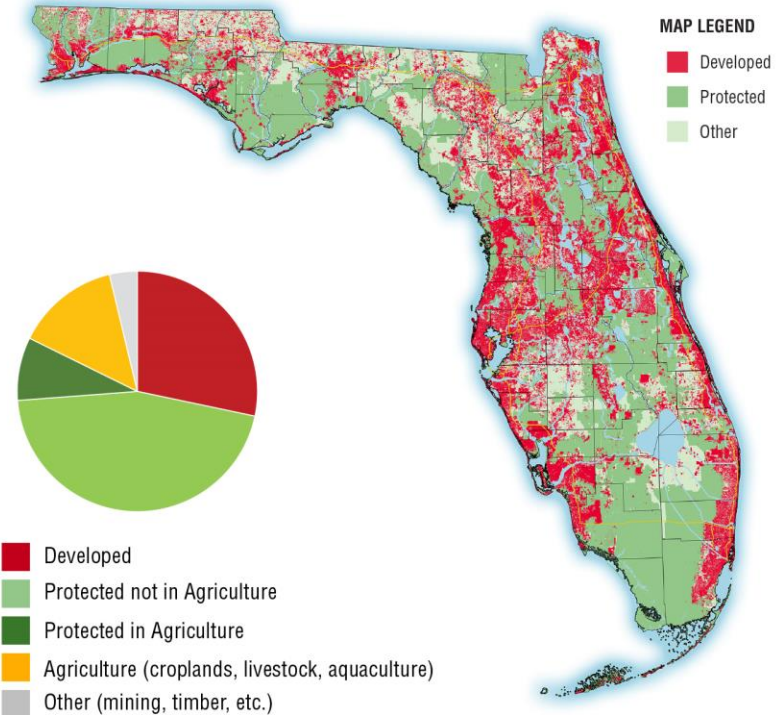
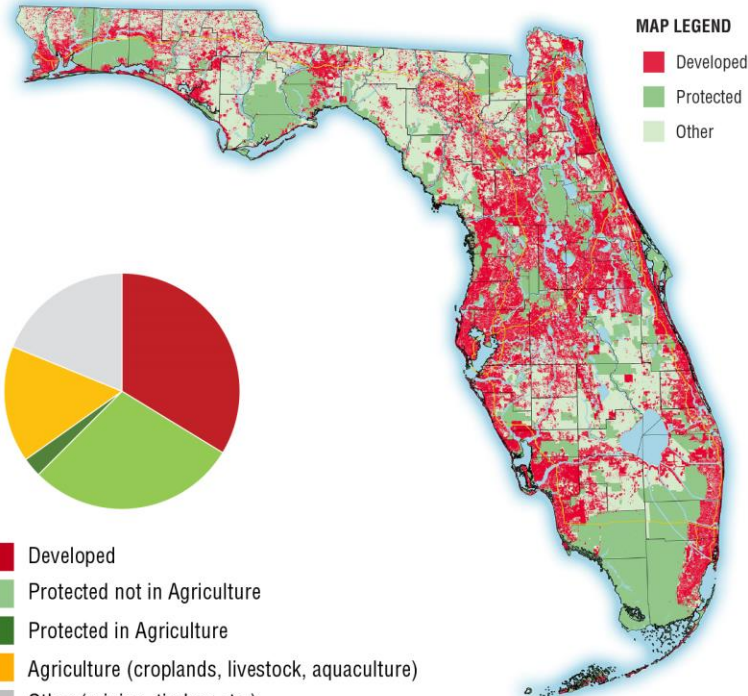
Let's compare statewide acreage

	Baseline	% of Land	Trend	% of Land	Alternative	% of Land
Developed	6,412,000	18.56%	11,647,716	33.72%	9,777,000	28.30%
Protected (excluding agriculture)	9,950,000	28.80%	9,950,000	28.80%	15,716,000	45.50%
Protected Agriculture	920,000	2.66%	920,000	2.66%	2,931,664	8.49%
Protected Subtotal	10,870,000	31.47%	10,870,000	31.47%	18,647,664	53.98%
Agriculture (croplands, livestock, aquaculture)	7,518,267	21.76%	5,520,237	15.98%	4,827,759	13.98%
Agriculture Subtotal	8,438,267	24.43%	6,440,237	18.64%	7,759,423	22.46%
Other (mining, timber, etc.)	9,742,733	28.20%	6,505,047	18.83%	1,290,577	3.74%
Total State Land Acres	34,543,000	100.00%	34,543,000	100.00%	34,543,000	100.00%

A Closer Look

Trend 2070

Alternative 2070



Can we do better?

YES!

Alternative 2070 shows:

- 15 million more people
- 5.8 million more acres of protected lands than the Trend
- 1.3 million more acres of agriculture than the Trend

If we want less sprawl it will be necessary to:

- Promote even greater rates of redevelopment in urban areas
- Promote even more compact patterns for new development



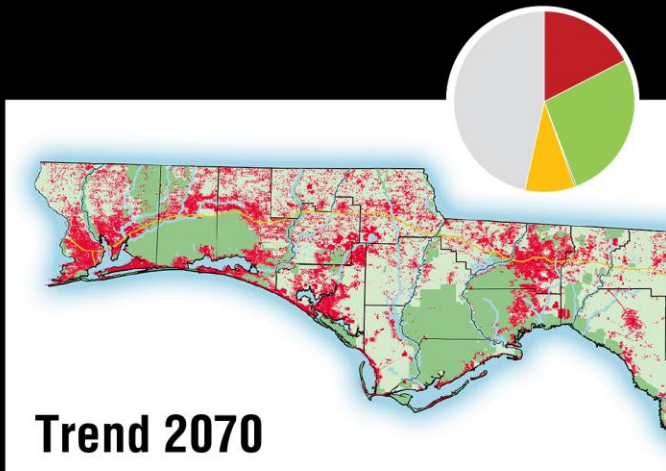
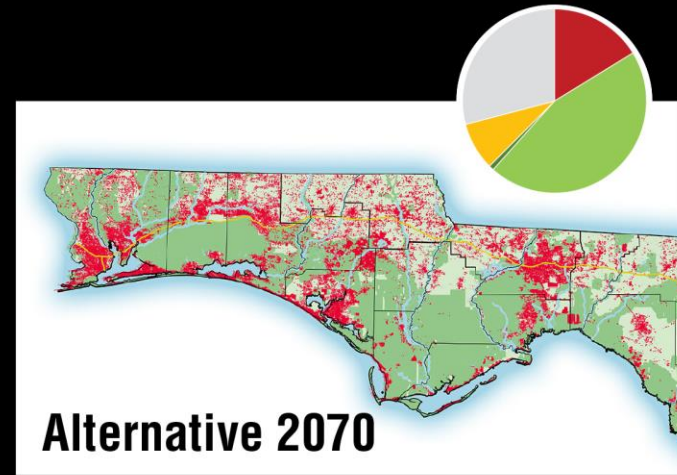
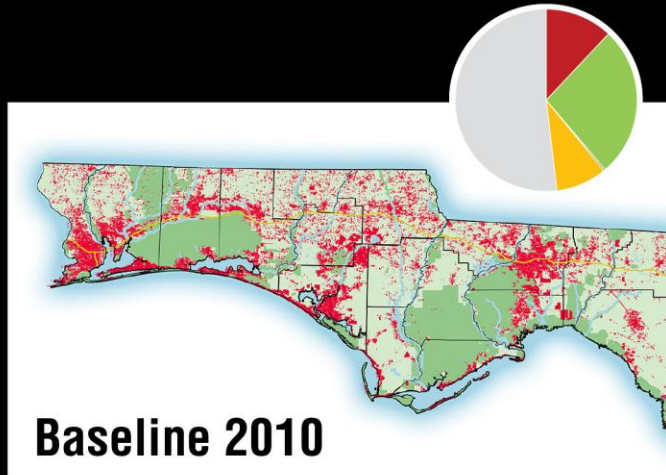
WHAT'S HAPPENING IN MY PART OF THE STATE?



The Florida Panhandle

MAP LEGEND

Developed Protected Other

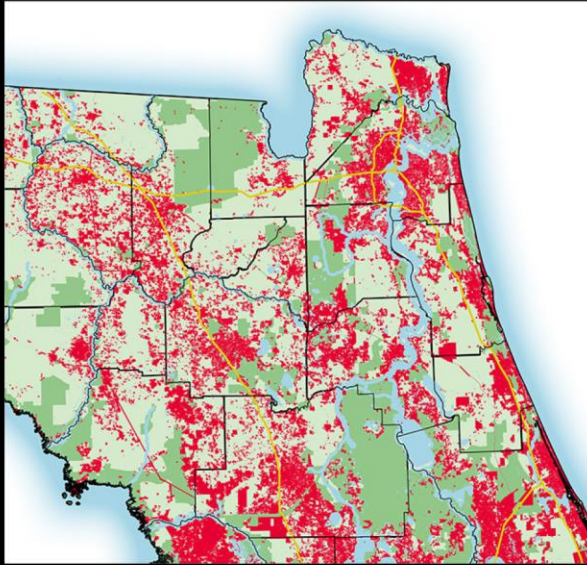


- Developed
- Protected not in Agriculture
- Protected in Agriculture
- Agriculture (croplands, livestock, aquaculture)
- Other (mining, timber, etc.)

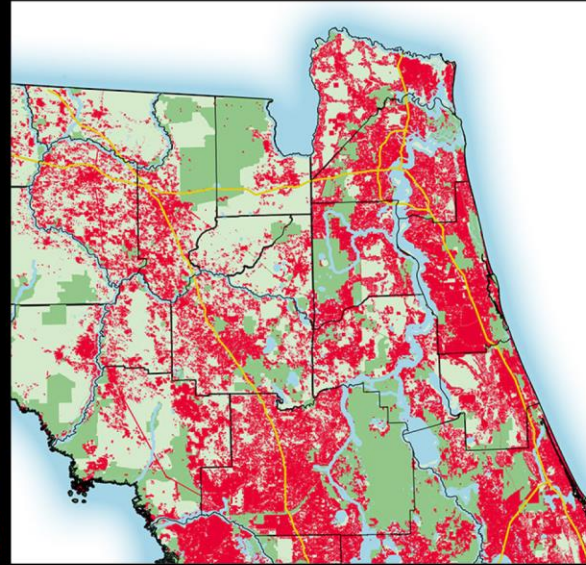
Northeast Florida

MAP LEGEND

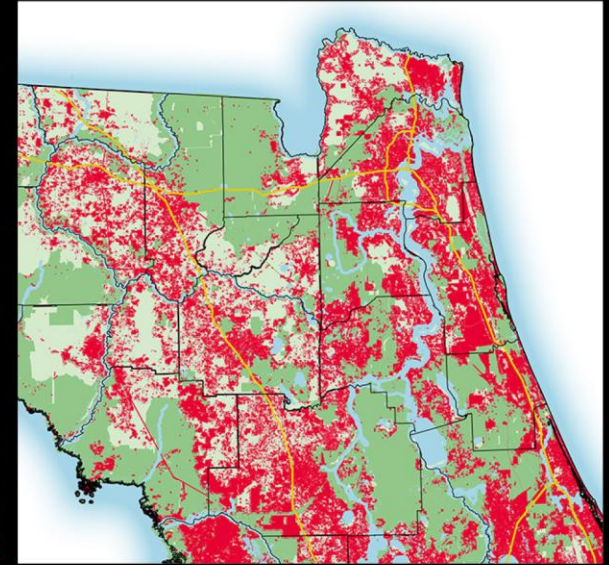
Developed Protected Other



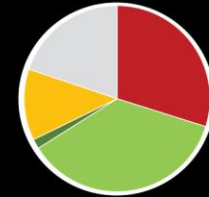
Baseline 2010



Trend 2070



Alternative 2070



Developed
Protected not in Agriculture

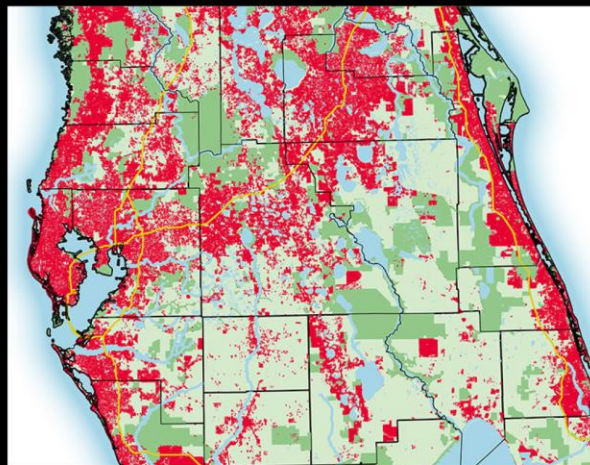
Protected in Agriculture
Agriculture (croplands, livestock, aquaculture)

Other (mining, timber, etc.)

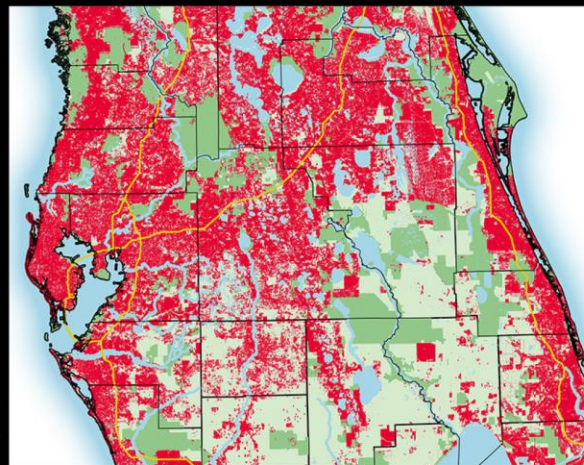
Central Florida

MAP LEGEND

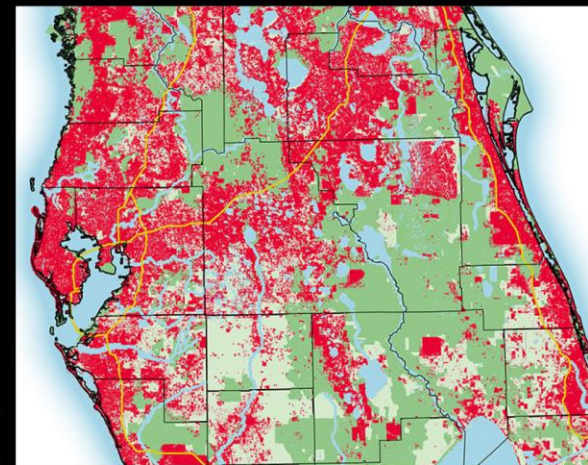
Developed Protected Other



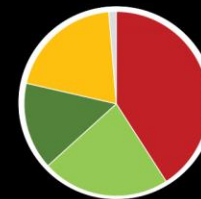
Baseline 2010



Trend 2070



Alternative 2070



Developed

Protected not in Agriculture

Protected in Agriculture

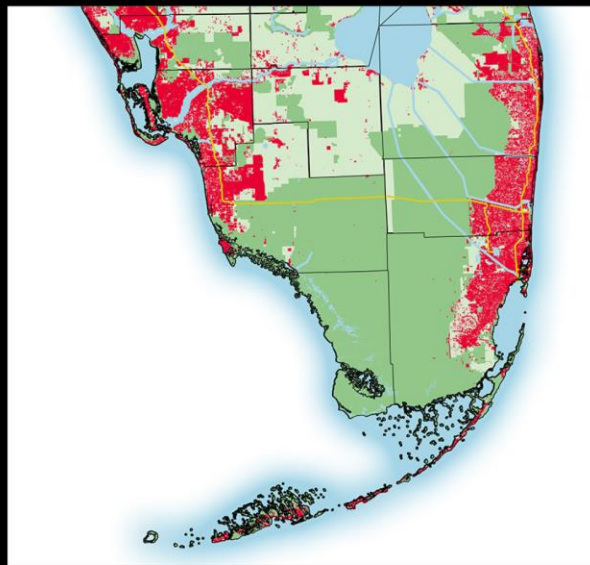
Agriculture (croplands, livestock, aquaculture)

Other (mining, timber, etc.)

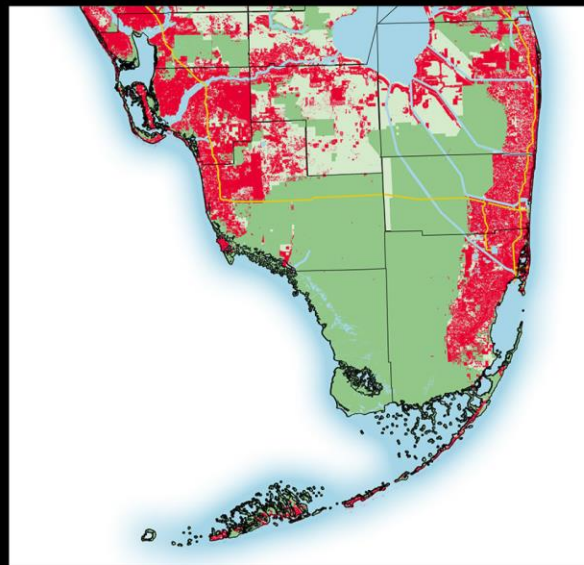
South Florida

MAP LEGEND

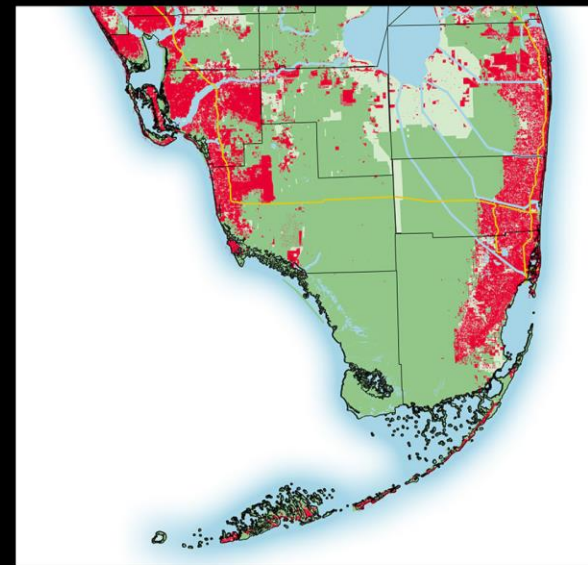
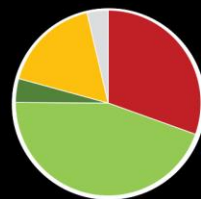
Developed Protected Other



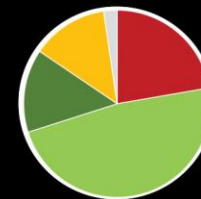
Baseline 2010



Trend 2070



Alternative 2070



Developed Protected in Agriculture Protected not in Agriculture Agriculture (croplands, livestock, aquaculture) Other (mining, timber, etc.)



HOW DO WE ACHIEVE A MORE SUSTAINABLE FUTURE?



Save Special Places

Florida's natural lands provide opportunities for recreation, shelter wildlife, cleanse our drinking water, and are the foundation of this state's economic prosperity.



*A great blue heron in Everglades National Park
Mac Stone Photography*

Protect Vital Conservation, Agricultural and Other Working Lands Like Those on Florida Forever and Florida Greenways Lists

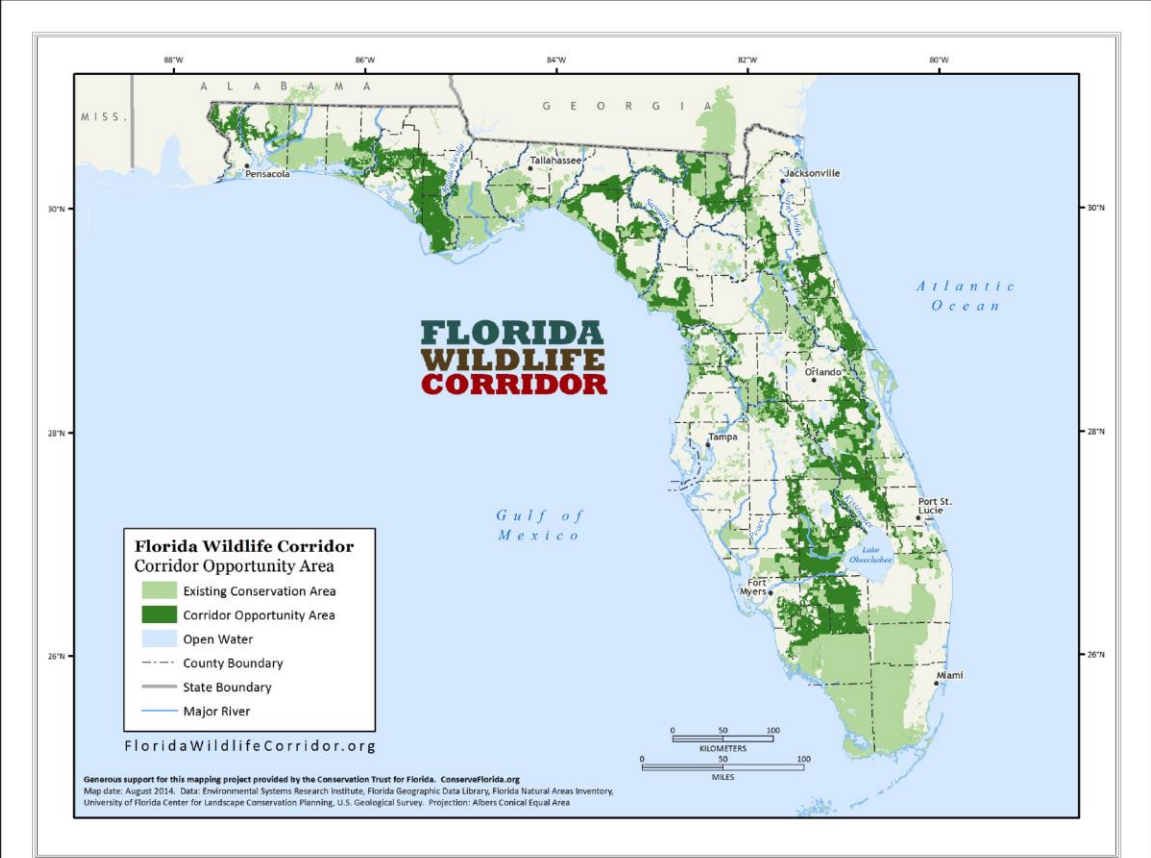
**Existing Conservation
and Working Lands**



**With Florida Forever and Florida Greenways
priorities 1 and 2 lands**



Support Funding for Greenways and Corridors that Protect Wildlife Habitat and Provide Recreational Opportunities



Establish incentives and increase funding to help landowners conserve important agricultural lands and other working landscapes



*2008 Ag-Environmental Award, Carroll Brothers Nursery in Clearwater
Florida Department of Agriculture and Consumer Services*



Work to significantly lessen the impact of new development on Florida's lands and waters

Build Better Communities

Vibrant, walkable, livable communities enhance our quality of life and our health and protect natural areas from development.

Because these development patterns are more compact, costs associated with installing and maintaining infrastructure such as roads and sewers are lower. This saves taxpayer dollars.

How do we build better communities in Florida?





CityPlace, West Palm Beach

Support infill and redevelopment in a manner that is sensitive to existing communities

When new areas are developed, give priority to those near existing communities and infrastructure

Encore! in Tampa with new housing at Tempo.
Tempo is 103 units per acre



EncoreTampa.com





Promote a mixture of homes, shops, schools and offices within close proximity

Downtown Doral
Codina Partners

Include a range
of housing
choices to
ensure
affordability

Affordable housing at Oak Ridge Estates in
Tarpon Springs
Approximately 11.6 units per acre



Reprinted with permission of The Tampa Bay Times.
All Rights Reserved



Design for multiple transportation options, including walking, biking and public transportation

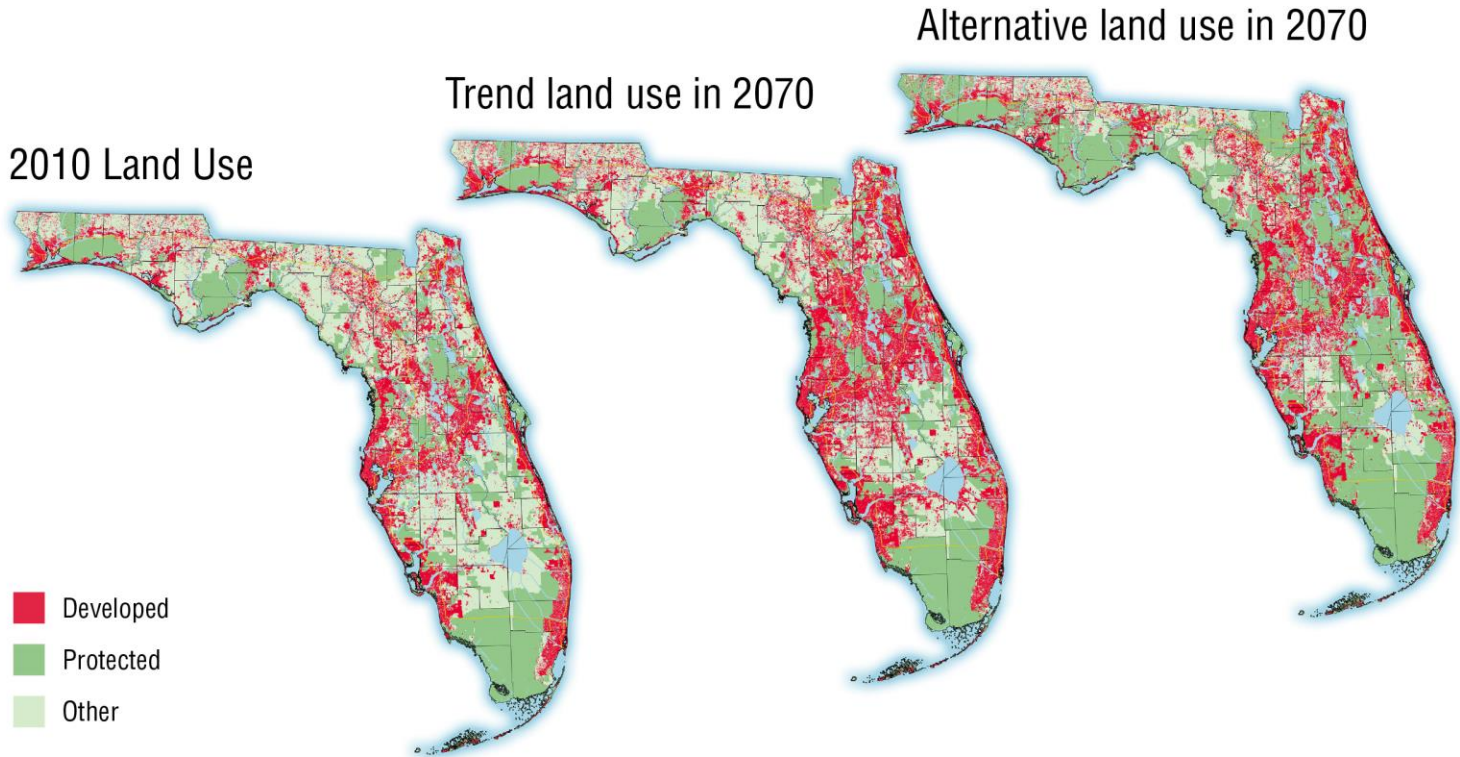
*A Sunrail stop in Central Florida
Florida Bicycle Association*

Protect
significant
historic &
natural
resources



DeLand Car Show
Division of Historical Resources | Florida Department of State

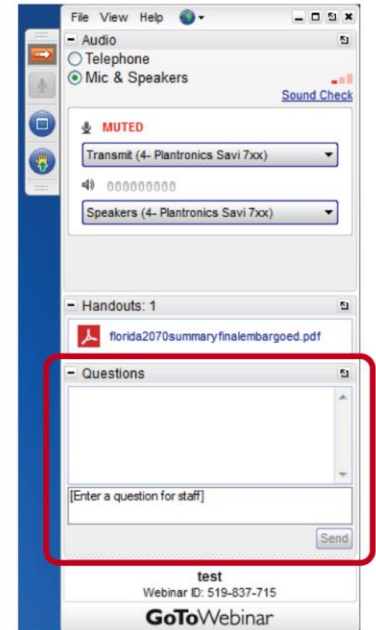
How Do You Envision Florida's Future?





If you have questions:

- Your webinar control panel includes a “Questions” box
- Please click on “+” sign and type any questions in this box
- Please refer to the slide number and/or speaker when you post your question
- We will do our best to answer all questions as time permits





This Webinar Has Been Approved for:

- 1.5 AICP CM credits for planners ([#9109124](#))
- 2 CLE credits for the Florida Bar ([#1606408N](#))
- 1 CEC for Certified Floodplain Managers
- .15 CEU for certified environmental health professionals





Upcoming Dr. John M. DeGrove Webinars

Coming Soon – Water 2070!

Visit www.1000friendsofflorida.org/webinar
to find out more!





The PowerPoint and materials
are available at

www.1000friendsofflorida.org/florida2070

