



# Complete Streets Implementation in Florida

## Audio Options

### **TO USE YOUR COMPUTER'S AUDIO:**

When the Webinar begins, you will be connected to audio using your computer's microphone and speakers (VOIP).

### **TO USE YOUR TELEPHONE:**

If you prefer to use your phone, select "Use Telephone" after joining the Webinar.

## About 1000 Friends of Florida:

- Founded in 1986, 1000 Friends of Florida is a 501(c)(3) nonprofit membership organization.
- We work to save special places and build better communities.
- We educate, advocate and negotiate to protect Florida's high quality of life.
- Our bipartisan board of directors includes advocates and experts from across the state.
- Visit [www.1000friendsofflorida.org/alerts/](http://www.1000friendsofflorida.org/alerts/) to sign up for email alerts!
- Please join us at [www.1000friendsofflorida.org/donate-now/](http://www.1000friendsofflorida.org/donate-now/)
- Follow 1000 Friends on [Facebook](#) and [Twitter](#)!



# Dr. John M. DeGrove Webinar Series



- Icon of comprehensive planning both in Florida and across the nation
- One of founders of 1000 Friends of Florida
- First Secretary of the Florida Department of Community Affairs
- His accomplishments recognized with the John M. DeGrove Eminent Scholar Chair in Growth Management and Development at Florida Atlantic University
- To find out more, please visit:  
[www.1000friendsofflorida.org/dr-degrove/](http://www.1000friendsofflorida.org/dr-degrove/)



# Thank you to the Dr. John M. DeGrove Webinar Sponsors:

## **FLORIDA STEWARD**

Archibald Foundation

## **FLORIDA GUARDIAN**

John M. DeGrove Eminent Scholar Chair, Florida Atlantic University

## **PRESIDENT'S CLUB**

Mosaic

Searcy Denney Scarola Barnhart & Shipley

## **FRIEND**

Cobb Cole

Ms. Kimberly A. DeGrove and Dr. William Partin

William Howard Flowers, Jr. Foundation, Inc.

Kitson Evergreen, LLC

Law Offices of Robert L. Parks. P.L.

The Perkins Charitable Foundation

Mr. Robert M. Rhodes



# Thank you to the Dr. John M. DeGrove Webinar Sponsors:

## SPONSOR

Ronald Book, PA  
Cambridge Systematics  
Mr. William M. DeGrove

## SUPPORTER

American Planning Association, Florida Chapter

Mr. Thomas J. Baird

Mr. David Orshefsky

Mr. Thomas Pelham

Tallahassee State Bank

Thomson Brock Luger & Company

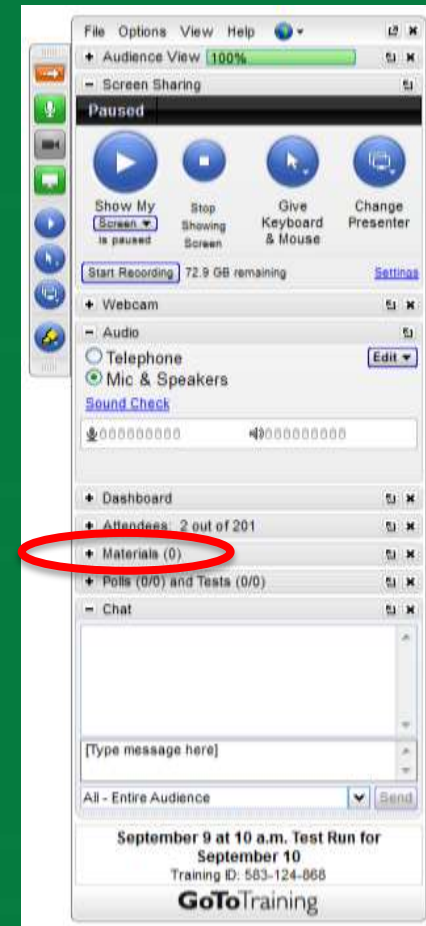
Treasure Coast Regional Planning Council

Mr. and Mrs. Peter & Helen Wallace





The PowerPoint is available at [www.1000friendsofflorida.org](http://www.1000friendsofflorida.org)



## This webinar has been approved for:

- 1.5 AICP CM credits for planners (#9008118)
- 2 CLE credits for Florida Attorneys (#1600415N)
- 1 contact hour for Certified Environmental Health Professionals (email [vyoung@1000fof.org](mailto:vyoung@1000fof.org) for certificate of participation)



# Upcoming Webinars

Visit [www.1000friendsofflorida.org/webinar/](http://www.1000friendsofflorida.org/webinar/) to find out more!

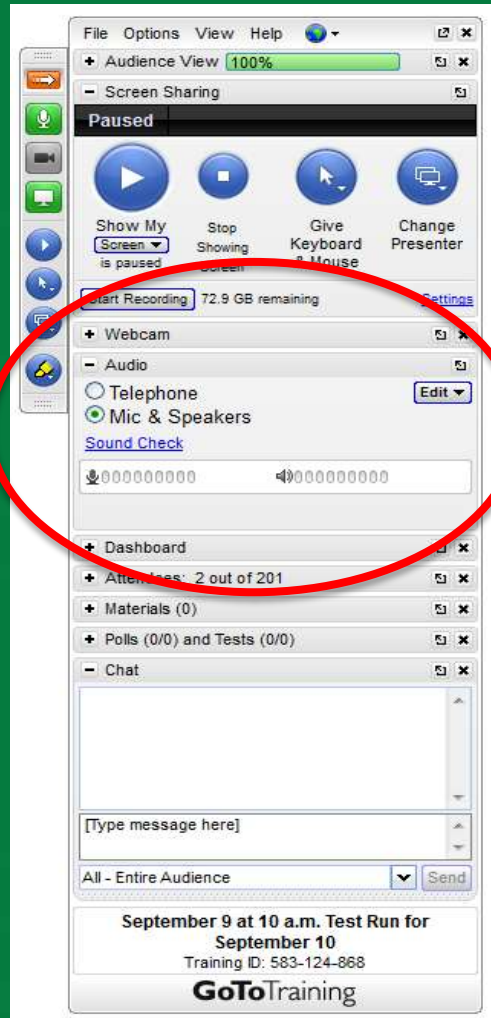
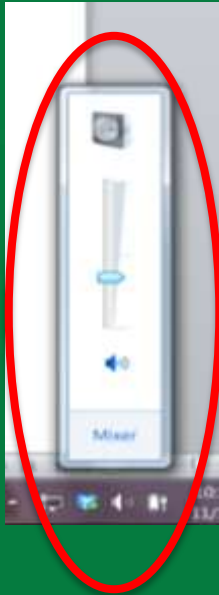
## REGISTRATION OPEN:

- **2016 Florida Legislative Wrap Up**  
Wednesday, March 23, 2016, noon to 1:30 p.m.  
Approved for 1.5 AICP CM, Applied for CLE & CEHP



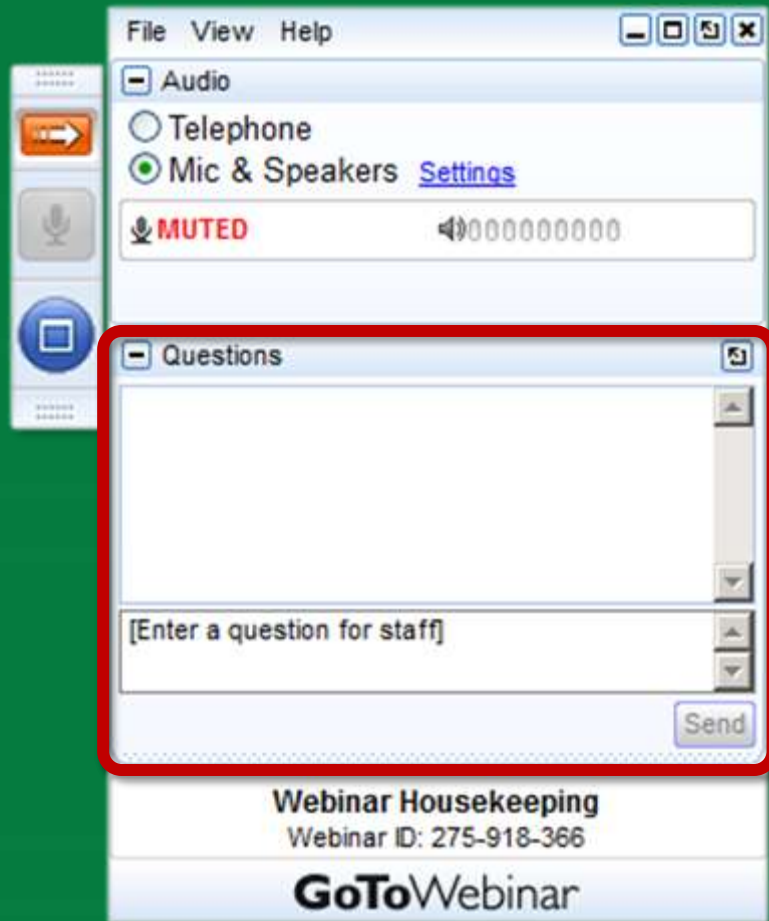


# If you have sound issues:



1. Adjust the volume on your computer
2. Adjust the audio on Go-to-Webinar

# If you have questions:



- Your webinar control panel includes a “Questions” box
- Please click on “+” sign and type any questions in this box
- Please refer to the slide number and/or speaker when you post your question
- Please keep your questions succinct!
- Staff will ask the presenters questions, as time permits

# Presenters



# Billy Hattaway, P.E., Florida Department of Transportation



- Secretary for District One of the FDOT
- Over 35 years of transportation and program management experience
- Champion for Secretary Ananth Prasad's Pedestrian and Bicycle Focused Initiative
- Chair of Bike/Walk Central Florida
- Author of the new Traditional Neighborhood Development Chapter and Handbook for the Florida Green Book



# DeWayne Carver, AICP, Florida Department of Transportation

- Statewide Bicycle/Pedestrian Coordinator for FDOT
- Career includes state and local government experience
- Nine years in private consulting with Hall Planning & Engineering, Inc. (HPE), focusing on walkable thoroughfare design and bicycle/pedestrian planning
- HPE work also included traffic analysis, urban design, and roadway design
- Has worked in cities all over the US, as well as Canada, South America, the Caribbean, and Africa
- Graduate of the University of Tennessee, Knoxville, and the University of North Carolina at Chapel Hill, where he received a Master of Regional Planning degree





# FDOT Complete Streets Initiative

*Billy Hattaway, PE*  
*Florida Department of Transportation*





Florida Department of  
**TRANSPORTATION**



# FDOT Complete Streets Initiative

*Presented to: 1000 Friends of Florida*



**Billy L. Hattaway, PE**  
District One Secretary



# FDOT's Pedestrian Safety Initiative



- Dangerous by Design (2011, 2014)
- Orlando, Tampa, Jacksonville, Miami-Ft. Lauderdale
- Secretary Ananth Prasad... “Being #1 in pedestrian fatalities and serious injuries is NOT where Florida wants to be.”

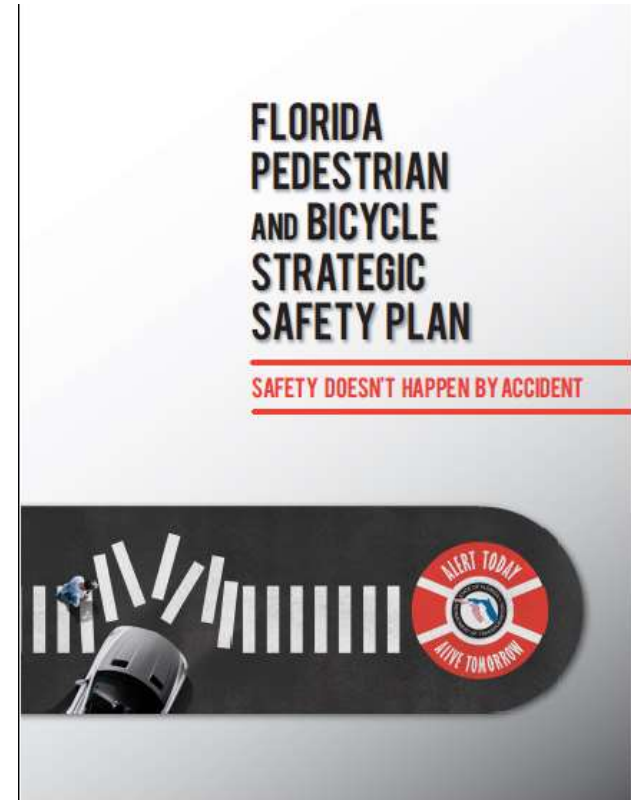


# The Launch



- NHTSA panel of experts: assessed Bike/Pedestrian Safety.
- NHTSA conducted “Pedestrian 101” training for all focused initiative team members.
- Developed Florida Pedestrian and Bicycle Strategic Safety Plan
- Alert Today/Alive Tomorrow

<http://alerttodayflorida.com/>



# Driving the Culture Change



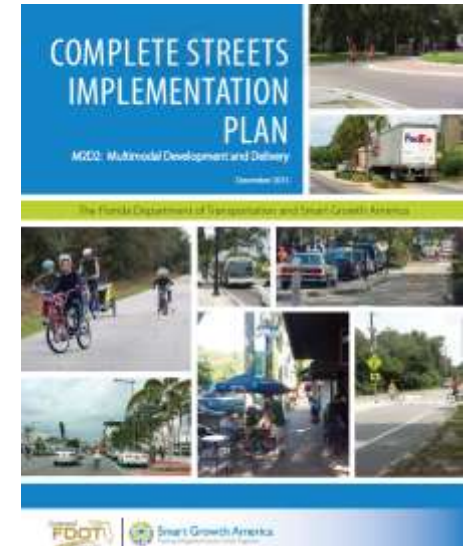
- Complete Streets Policy & Implementation
  - <http://www.flcompletestreets.com/>
- Context Based Bicycle/Pedestrian Facilities
  - <http://www.dot.state.fl.us/rddesign/BikePed/Default.shtm>
- Promotion of Modern Roundabouts
  - <http://www.dot.state.fl.us/rddesign/Roundabouts/Default.shtm>
- Guidance for Road Diets on State System
  - <http://www.dot.state.fl.us/rddesign/CSI/Files/Lane-Elimination-Guide-Part2.pdf>



# Supporting the Culture Change



- Training – FHWA Focus State
  - Developing Pedestrian Safety Action Plans
  - Conducting Road Safety Audits
  - Designing for Pedestrian Safety
  - Roundabout Design
- Complete Streets Handbook
- Engineering (Targeted)
- Education (Media Campaign)
- Enforcement (High Visibility)

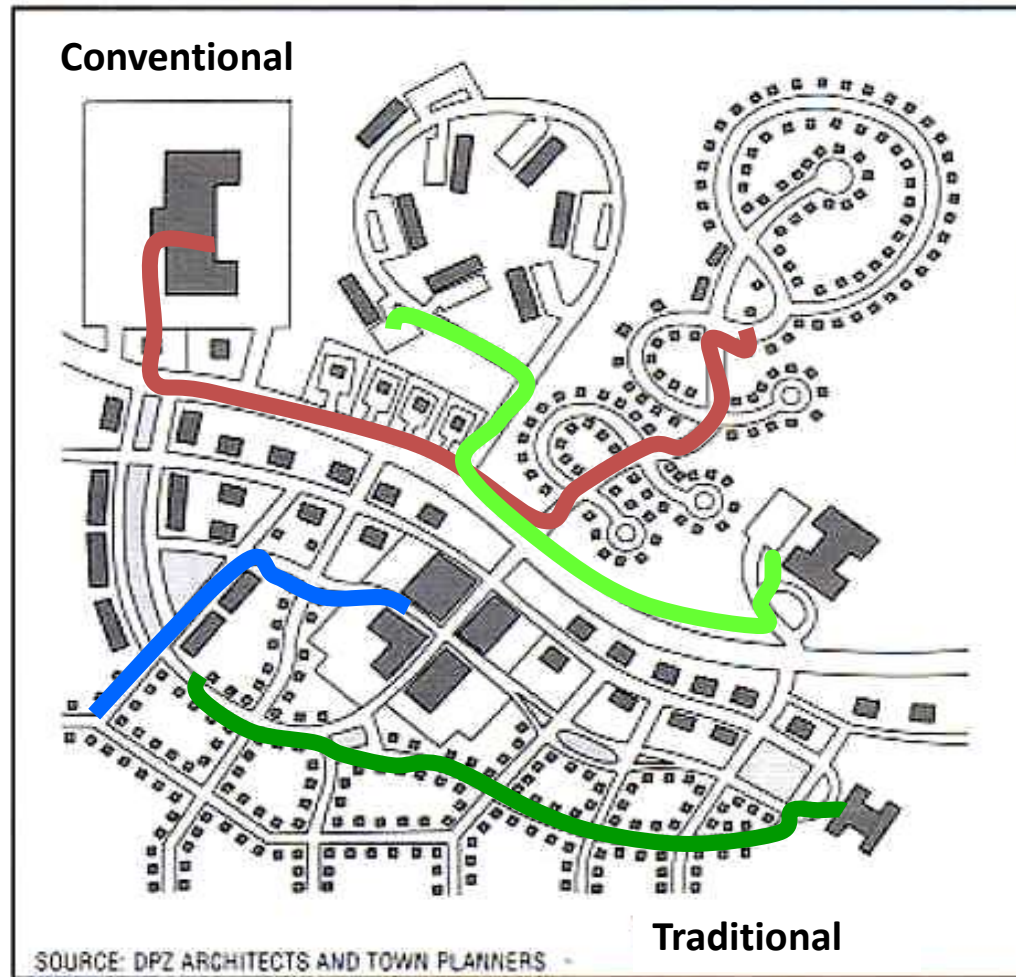


# How We Got Here



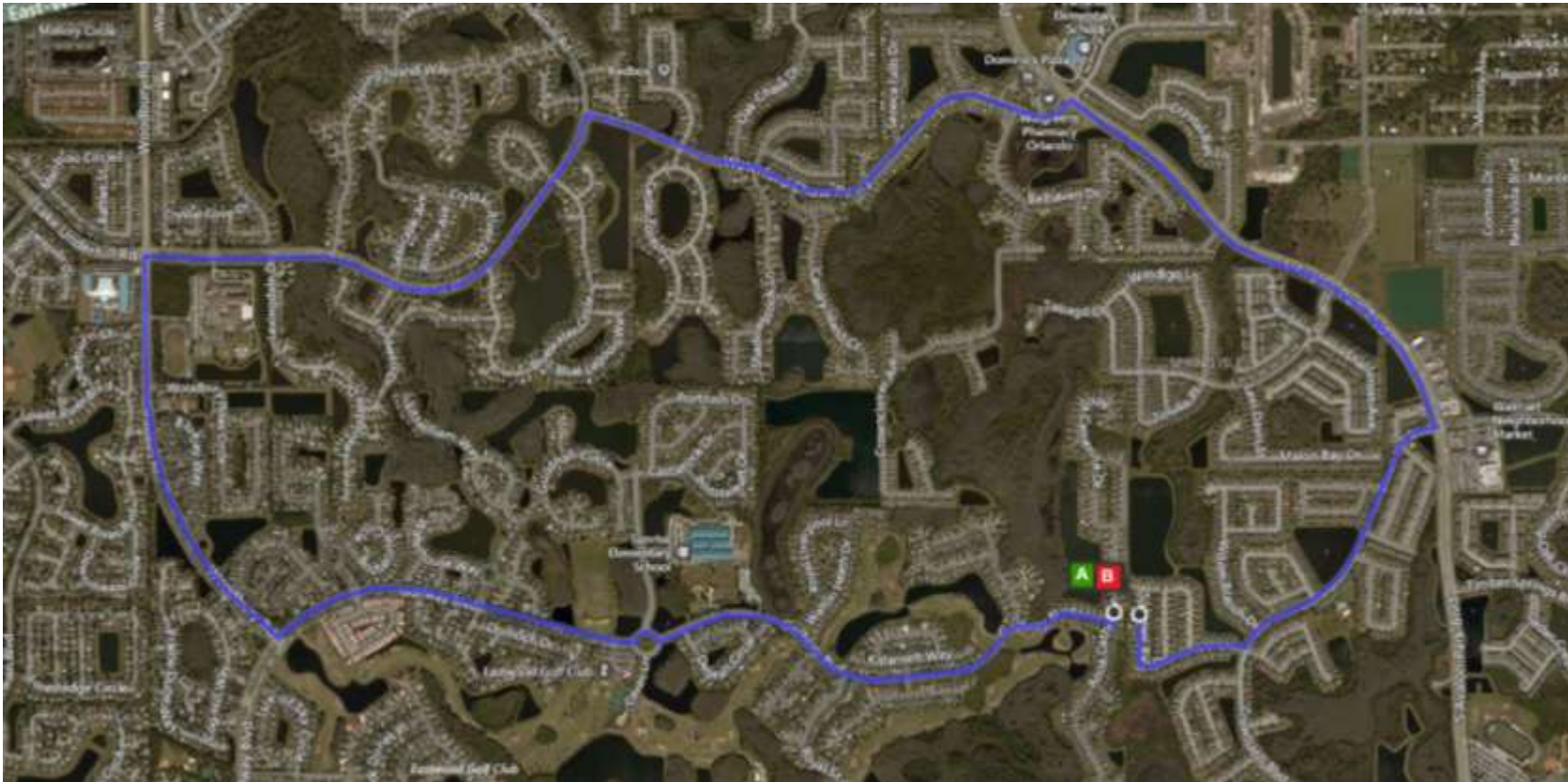
**Fowler Ave, Tampa**

# Land Development Patterns





# Land Development Patterns



**1585 Anna Catherine Dr, Eastwood Park, Orange County, FL**  
**13415 Summer Rain Dr, Avalon Park, Orange County, FL**

**7.1 mile drive, yet only 70' apart**



Florida Department of Transportation

# Land Development Regulations





# Driver Expectation



**Thomasville Rd, Tallahassee, FL**



Florida Department of Transportation

# Driver Expectation





# FHWA Proven Countermeasures



Roundabouts



Corridor Access Management



Backplates with Retroreflective Borders



Longitudinal Rumble Strips and Stripes on Two-Lane Roads



Enhanced Delineation and Friction for Horizontal Curves



Safety Edges<sup>SM</sup>



Medians and Pedestrian Crossing Islands in Urban and Suburban Areas



Pedestrian Hybrid Beacon



Road Diet

# Modern Roundabouts/Road Diets



**Gaines St., Tallahassee, FL**



Florida Department of Transportation

# Modern Roundabouts/Road Diets



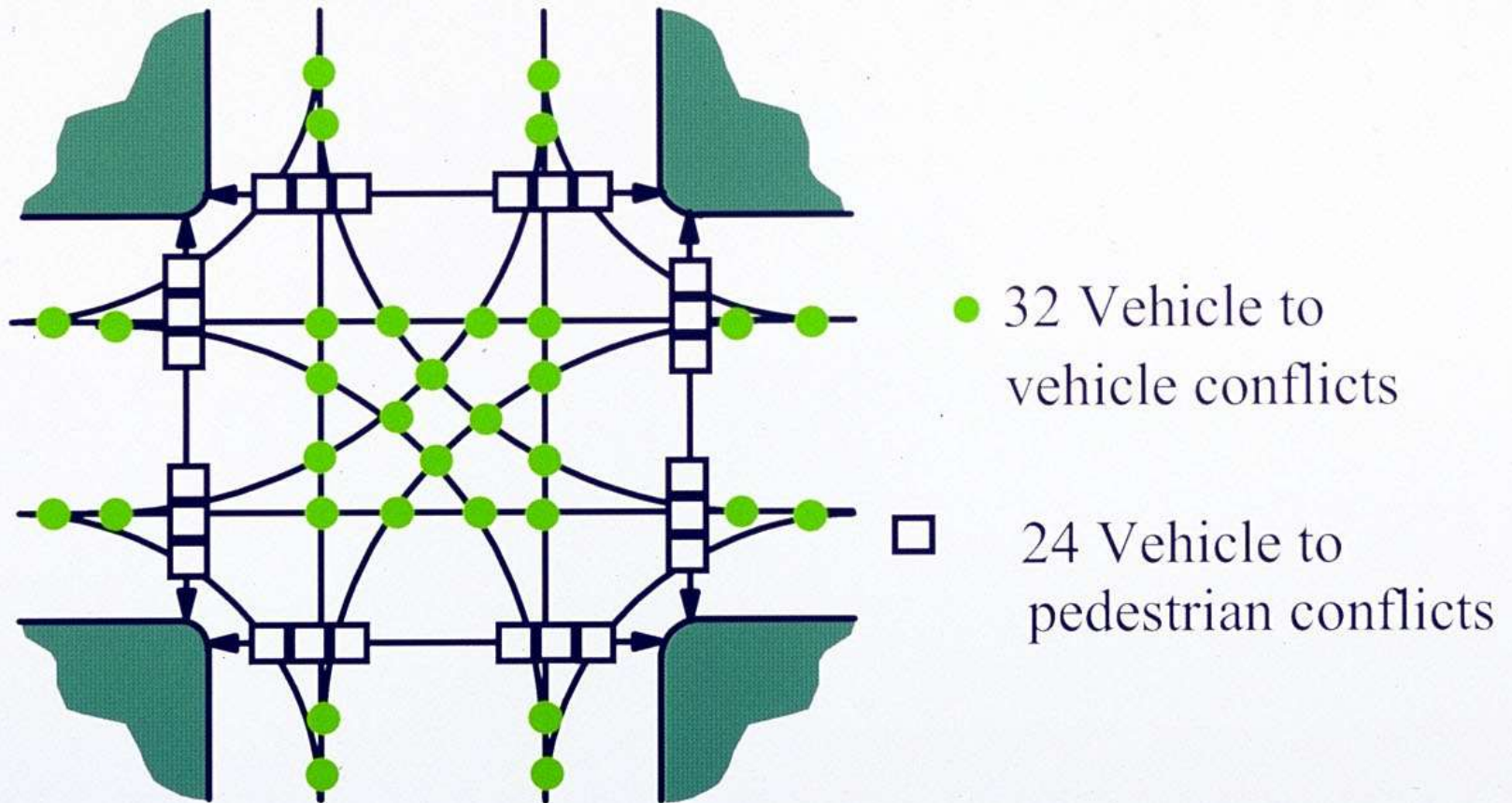
**Gaines St., Tallahassee, FL**



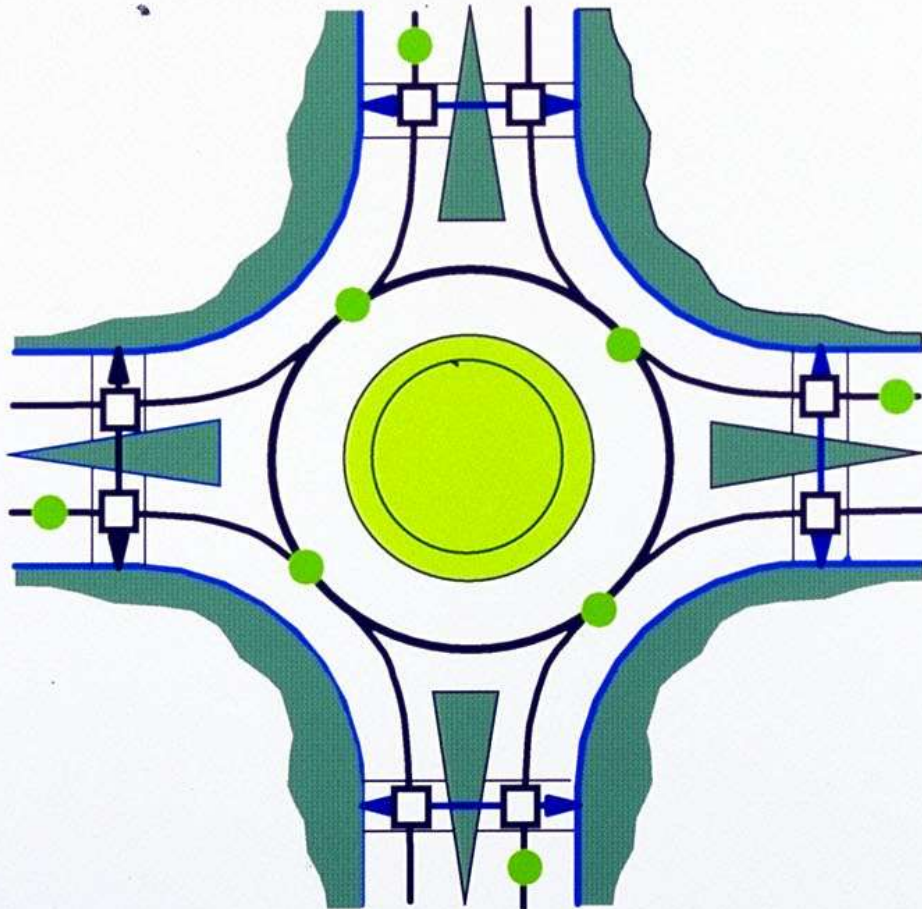
Florida Department of Transportation



# Conflicts At a Four-Way Intersection



# Conflicts At Roundabouts



- 8 Vehicle to vehicle conflicts
- 8 Vehicle to pedestrian conflicts

# Modern Roundabouts/Road Diets



Roundabouts are a proven safety solution

- 90 % decrease in the fatal crash rate;
- 35 % decrease in the total crash rate;
- 76 % decrease in serious injuries;
- Cost less to operate
- 75% more efficient than signals



# Mid-Block Crossings



California

# Rectangular Rapid Flashing Beacon (RRFB)



**St. Petersburg, FL**

# Pedestrian Hybrid Beacon (HAWK)



**St. Petersburg, FL**



# Lane Width



Charleston, SC

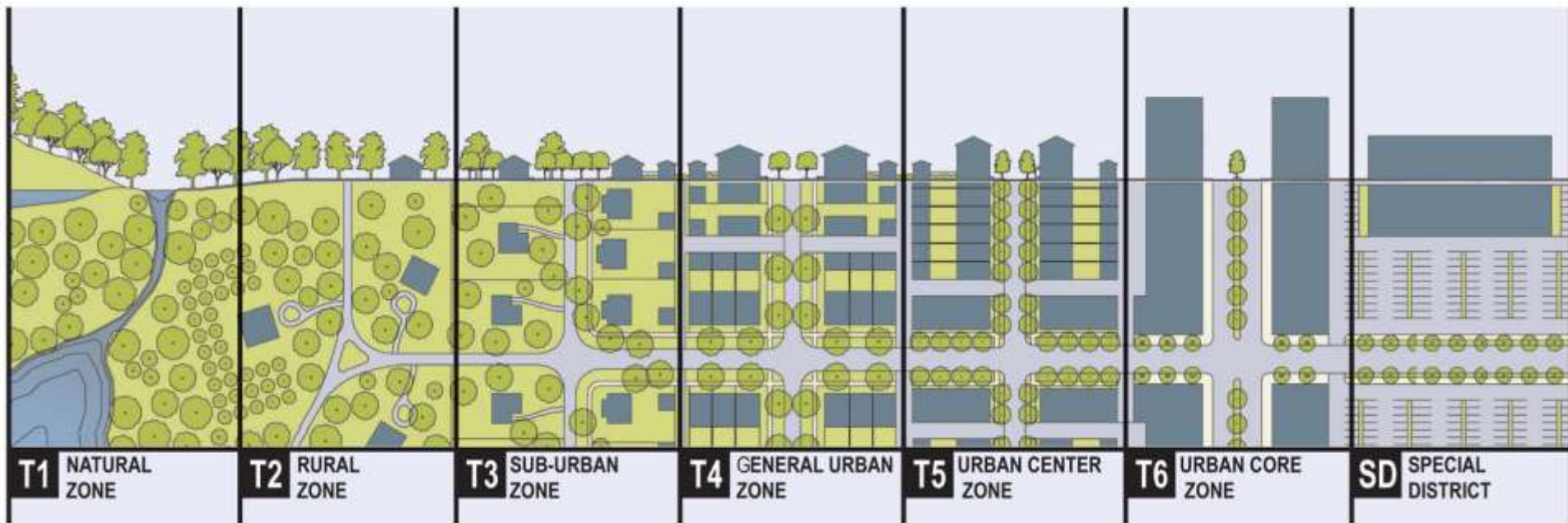
# Lane Width



- The normal range of design lane width is 9-12'.
- Lane widths substantially less than 12 feet are considered adequate for a wide range of volume, speed and other conditions.
- There is less direct evidence of a safety benefit associated with wider lanes in urban areas.

AASHTO - A Guide for Achieving Flexibility In Highway Design

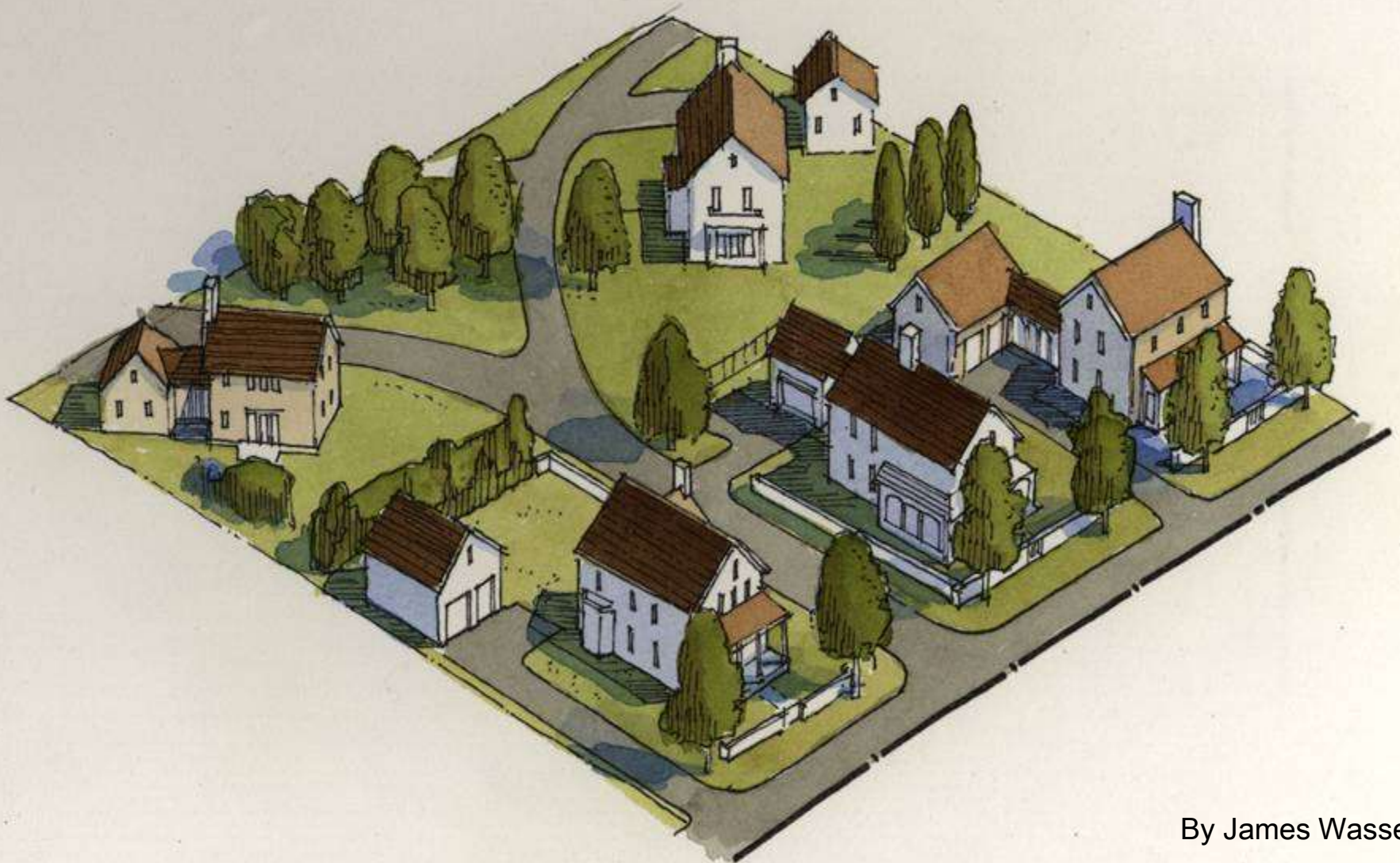
# Define the Context



## Transect Zones, Smart Code



# T-3 Suburban



By James Wassell

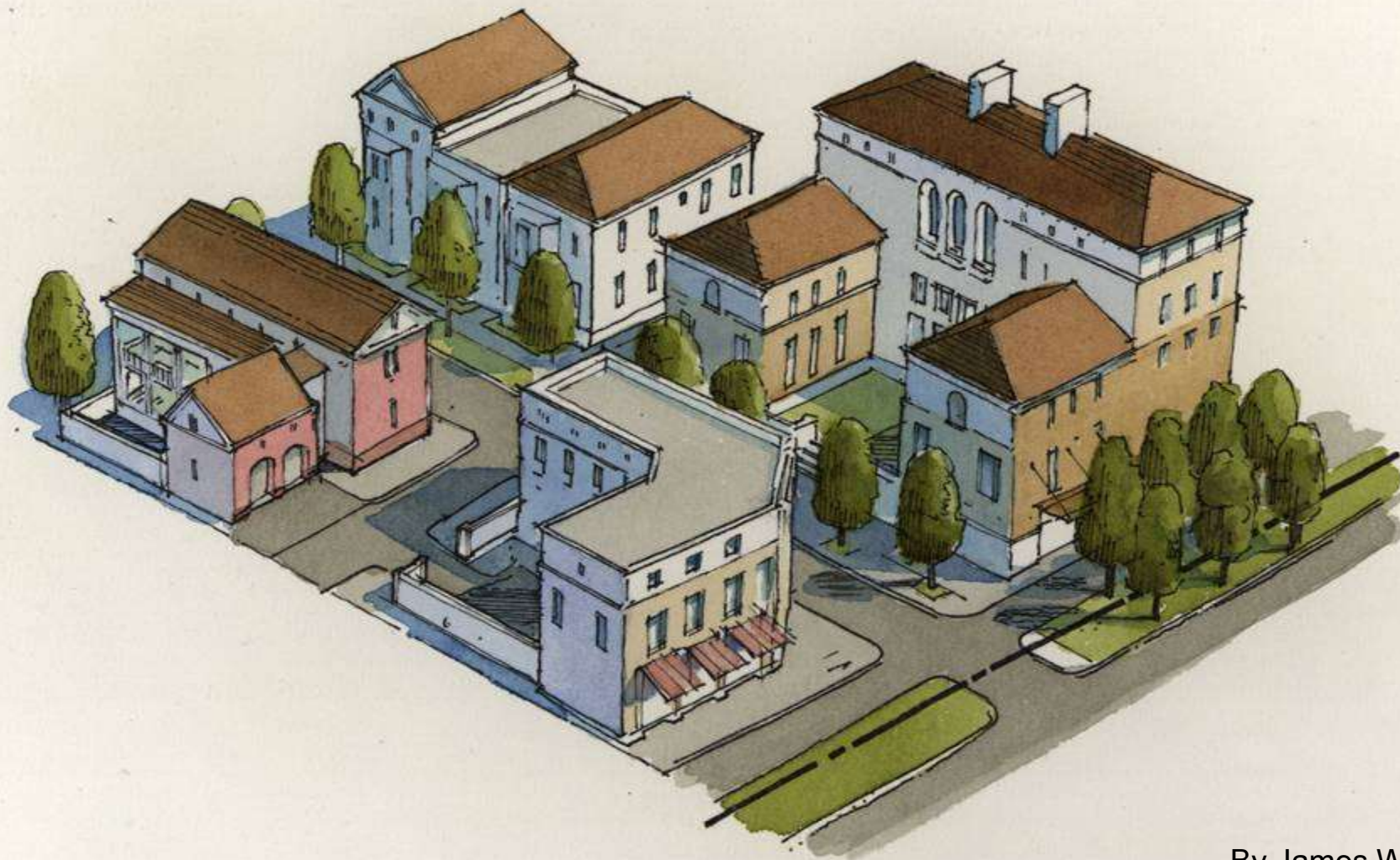
# T-4 General Urban



By James Wassell

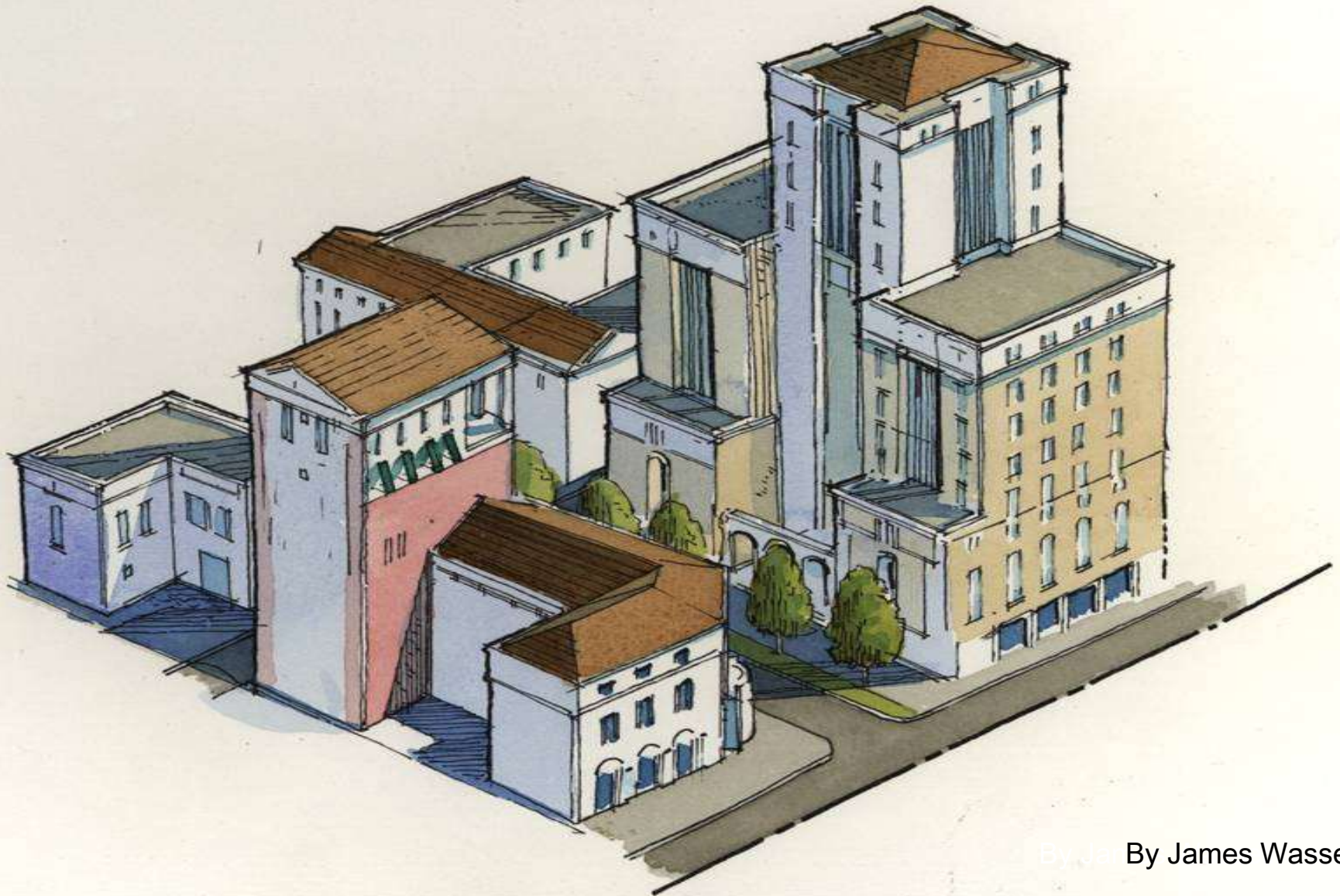


# T-5 Urban Center



By James Wassell

# T-6 Urban Core



By James Wassell



# Baldwin Park, Orlando, FL



- 1,100 Acres
- 250 Acres of Lakes
- **32 Street Connections**
- 14,000 Residents
- 125 Businesses
- Mixed Use
- Publix, CVS
- 20 Neighborhood Parks
- “A” Rated Schools
- 50 miles of Trails
- Single Family
- Town Homes
- Apartments
- Condominiums
- Live/Work

# Mixed Use Development



**New York Ave, Winter Park, FL**

# Context Based Bike Facilities



## DRAFT Concepts:

- Context/Speed/Volume Based
- Low Speed/Volume – Shared Travel Lanes
- Moderate Speed/Volume - Bike Lanes (7' Standard)
  - New Construction
  - Retrofit Projects
- Higher Speed/Volume - Multi-use Paths (10' Standard)



# Existing Bike Lane



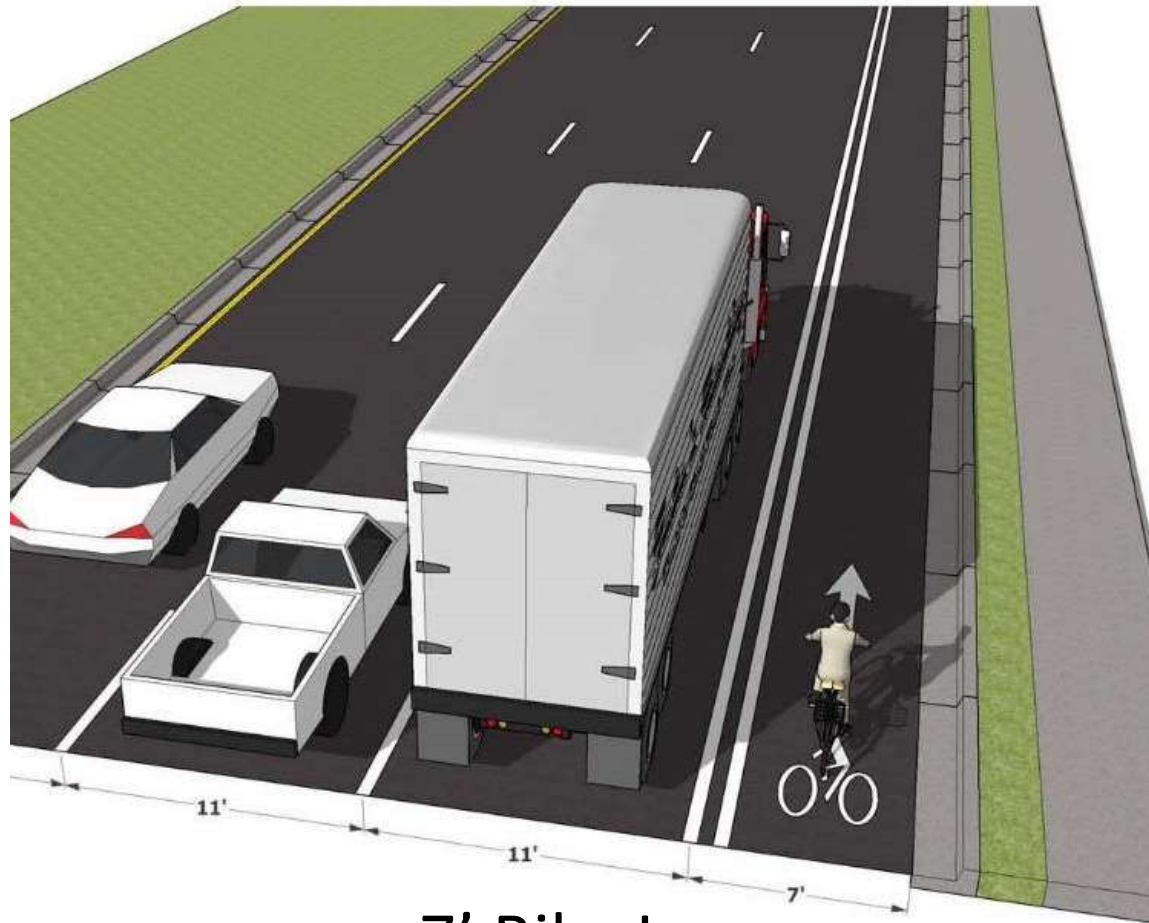
**Winter Park, FL**

# Shared Travel Lane



**Winter Park, FL**

# 7' Buffered Bike Lane



7' Bike Lane

# Side Path



**Orlando, FL**



Florida Department of Transportation



# Multi-Use Trail



**Baldwin Park, FL**

# Making a Street Complete



**Woodville Hwy, Woodville, FL**



Florida Department of Transportation



# Johnnie Dodds Blvd, Mt. Pleasant, SC



- Citizen/Business Funded
- Created Counter Proposal
- 200' ROW
- Interchanges Proposed
- Two Way Frontage Roads
- Business Failing
- Road Divided Community
- Commuter Corridor
- Proposed Roundabout Intersections



# Making a Street Complete





# Making a Street Complete



# Making a Street Complete



# Making a Street Complete





# Making a Street Complete





# Making a Street Complete



# Making a Street Complete





# Making a Street Complete





# Making a Street Complete



# Making a Street Complete





## QUESTIONS??



Secretary Boxold...“Addressing the issue of bicycle and pedestrian safety requires a comprehensive approach. We have to change the way we design and engineer our roads, we have to improve our education efforts, and clarify our traffic laws.”

Billy L. Hattaway, P.E.

[billy.hattaway@dot.state.fl.us](mailto:billy.hattaway@dot.state.fl.us)



# Complete Streets Implementation

*DeWayne Carver, AICP*  
*Florida Department of Transportation*





Florida Department of  
**TRANSPORTATION**

# Complete Streets

*Florida Department of Transportation*

*presented to*

**1000 Friends of Florida**

*presented by*

**DeWayne Carver, AICP**  
**State Bicycle/Pedestrian Coordinator**  
**FDOT Roadway Design Office**



# Complete Streets



## Florida Department of Transportation

RICK SCOTT  
GOVERNOR

605 Suwannee Street  
Tallahassee, FL 32399-0450

ANANTH PRASAD, P.E.  
SECRETARY

### POLICY

Effective: September 17, 2014  
Office: Design Director  
Topic No.: 000-625-017-a


### COMPLETE STREETS

It is the goal of the Department of Transportation to implement a policy that promotes safety, quality of life, and economic development in Florida. To implement this policy, the Department will routinely plan, design, construct, reconstruct and operate a context-sensitive system of "Complete Streets." While maintaining safety and mobility, Complete Streets shall serve the transportation needs of transportation system users of all ages and abilities, including but not limited to:

- Cyclists
- Freight handlers
- Motorists
- Pedestrians
- Transit riders

The Department specifically recognizes Complete Streets are context-sensitive and require transportation system design that considers local land development patterns and built form. The Department will coordinate with local governments, Metropolitan Planning Organizations, transportation agencies and the public, as needed to provide Complete Streets on the State Highway System, including the Strategic Intermodal System.

This *Complete Streets Policy* will be integrated into the Department's internal manuals, guidelines and related documents governing the planning, design, construction and operation of transportation facilities.

  
Ananth Prasad, P.E.  
Secretary



# Complete Streets



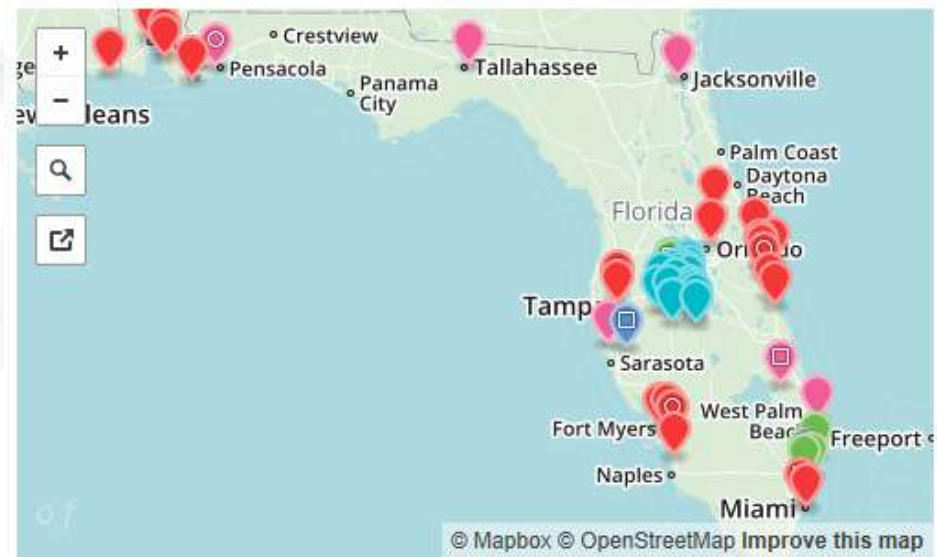
- Policy adopted in Sept 2014
- Requires “context-appropriate complete streets”
- Promotes economic development
- Addresses our safety problem with pedestrians and cyclists
- Lets FDOT “right size” our streets to fit their contexts
- Promotes more cost-effective solutions to transportation issues



# Local Government Interest....

- Local governments are adopting “complete streets”
- We work there too
- Lead, follow, or get out of the way

Interactive Map of Regional and Local Policies



Key: **Blue:** Laws & Ordinances | **Red:** Resolutions | **Yellow:** Tax Ordinances | **Purple:** Internal Policies or Executive Orders | **Magenta:** Plans | **Green:** Design Manuals or Guides | **Turquoise:** Policies Adopted by Elected Boards

# COMPLETE STREETS IMPLEMENTATION PLAN

M2D2: Multimodal Development and Delivery

December 2015



The Florida Department of Transportation and Smart Growth America



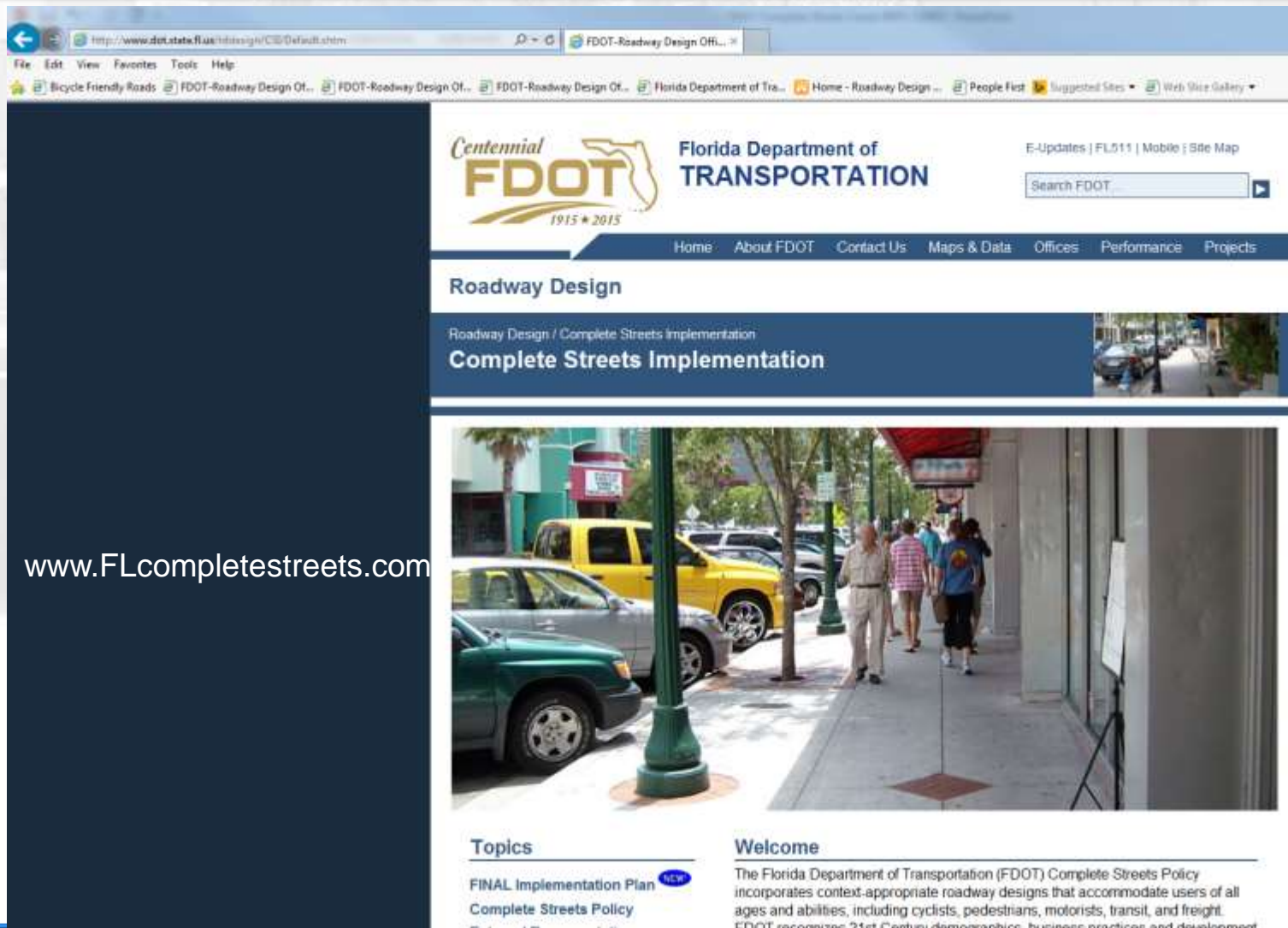
- Prepared by SmartGrowth America working with FDOT
- It's a road map, not a vehicle!
- Provides a "common vision" for the various offices
- Each office is responsible for its own part





# Complete Streets Website

www.FLcompletestreets.com



The screenshot shows the FDOT website interface. At the top, there's a browser window with the URL <http://www.fdot.state.fl.us/rdesign/CS/default.htm>. The page header includes the FDOT logo with 'Centennial 1915 \* 2015', the text 'Florida Department of TRANSPORTATION', and a search bar. Navigation links include Home, About FDOT, Contact Us, Maps & Data, Offices, Performance, and Projects. The main content area is titled 'Roadway Design' and 'Complete Streets Implementation'. A large photograph shows a city street scene with a yellow taxi, a green car, and pedestrians walking on a sidewalk. Below the photo, there are sections for 'Topics' and 'Welcome'. The 'Topics' section mentions the 'FINAL Implementation Plan Complete Streets Policy'. The 'Welcome' section states that the FDOT Complete Streets Policy incorporates context-appropriate roadway designs for all ages and abilities, including cyclists, pedestrians, motorists, transit, and freight. It also mentions that FDOT recognizes 21st Century demographics, business practices, and development.

Centennial FDOT 1915 \* 2015

Florida Department of TRANSPORTATION

E-Updates | FL511 | Mobile | Site Map

Search FDOT...

Home About FDOT Contact Us Maps & Data Offices Performance Projects

Roadway Design

Roadway Design / Complete Streets Implementation

Complete Streets Implementation

Topics

FINAL Implementation Plan Complete Streets Policy

Welcome

The Florida Department of Transportation (FDOT) Complete Streets Policy incorporates context-appropriate roadway designs that accommodate users of all ages and abilities, including cyclists, pedestrians, motorists, transit, and freight. FDOT recognizes 21st Century demographics, business practices and development.

# **Complete Streets Implementation Plan**

## **Five-part implementation framework:**

- I. Revising guidance, standards, manuals, policies, and other documents**
- II. Updating decision-making processes**
- III. Modify approaches for measuring performance**
- IV. Managing internal and external communication and collaboration during implementation**
- V. Providing ongoing education and training**

**Parts proceed in parallel, not successively**

# Sample Handbooks....

FLORIDA DEPARTMENT OF TRANSPORTATION

District 5

## MULTI-MODAL CORRIDOR PLANNING GUIDEBOOK

Version 1 | August, 2013



## SMART TRANSPORTATION GUIDEBOOK

*Planning and Designing Highways and Streets  
that Support Sustainable and Livable Communities*



New Jersey Department  
of Transportation



Pennsylvania Department  
of Transportation

MARCH 2008



# Target Timeline pp. 28-29 (subject to updates!)

- **Phase 1 – finalize and adopt plan – Jan. 2016**
- **Phase 2 – Launch Implementation Process – through Feb. 2016**
- **Phase 3 – Detailed Scoping - June 2016**
- **Phase 4 – Update Documents and Practices – Dec. 2017**
- **Phase 5 – Evaluate and Determine Next Steps – Jan. 2018/Ongoing**
- **Subject to reality as we proceed!**

# What's next?

- **Roadway Design Office preparing scope for Plans Preparation Manual update**
- **Internal workshops in Central Office**
- **Some districts doing workshops**
- **Statewide Implementation Team will continue**
- **Monthly meetings w/Secretary Hattaway will continue**
- **Regular briefings to Executive Team will continue**











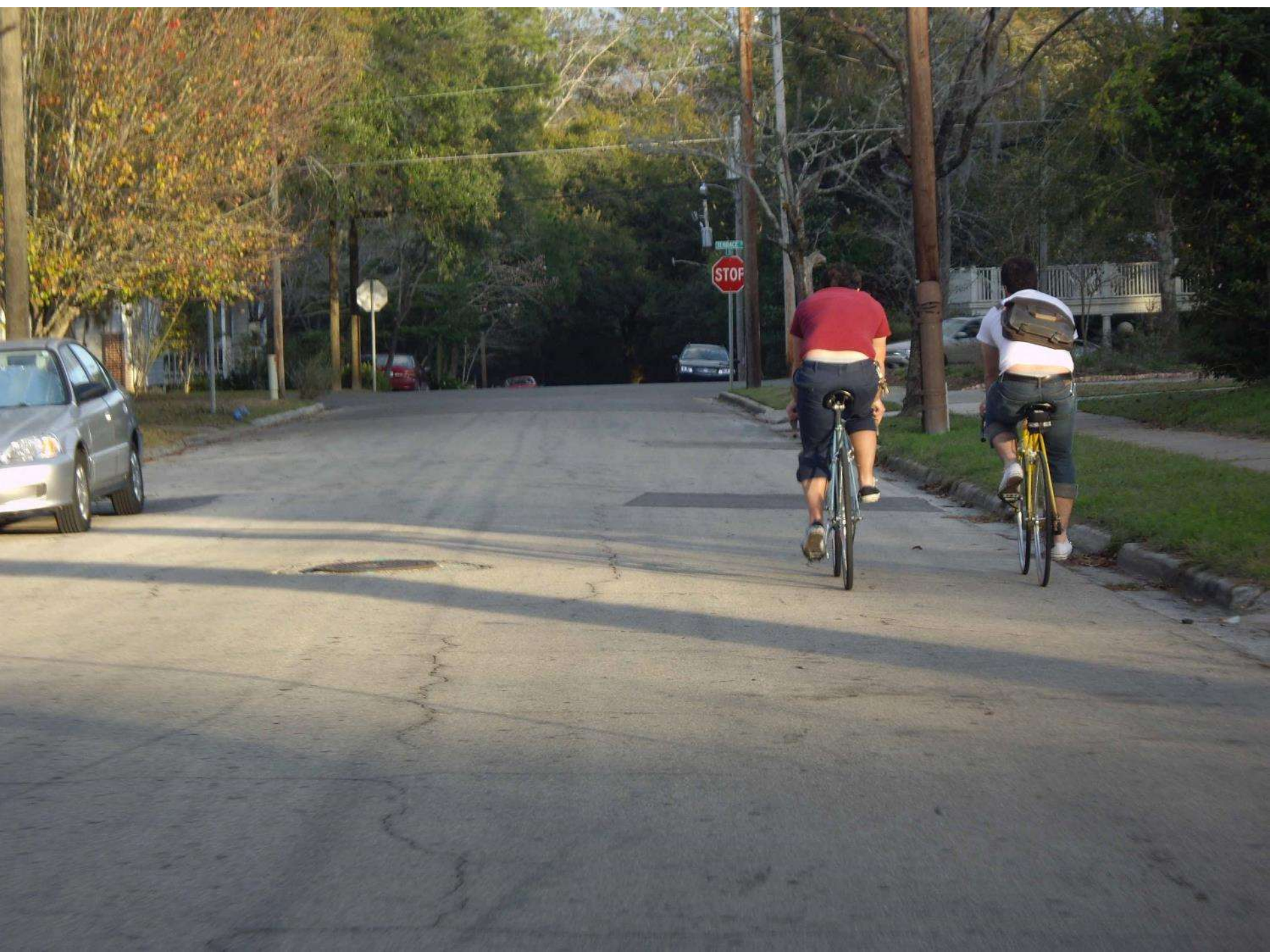


SR 50 in Sumter County

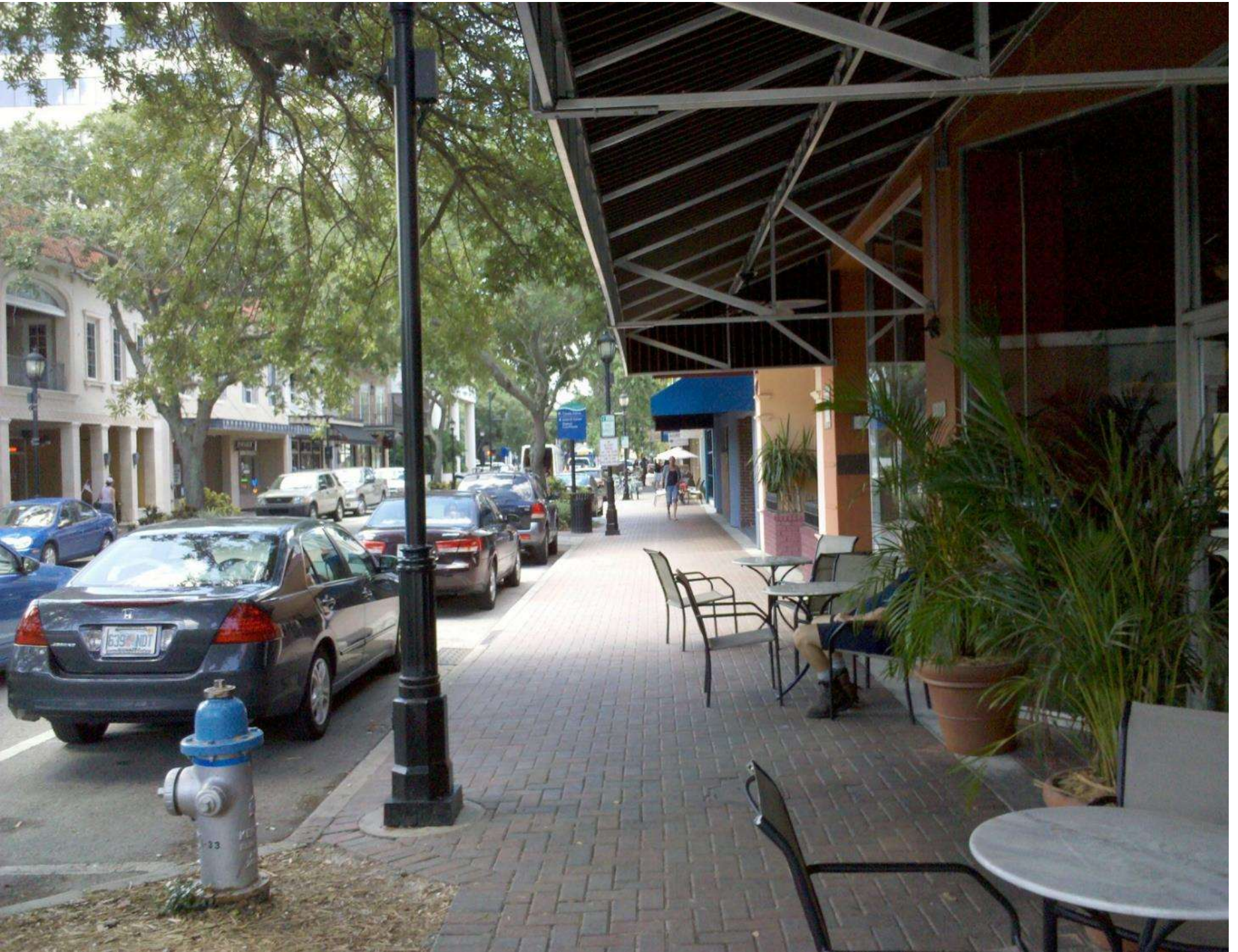


















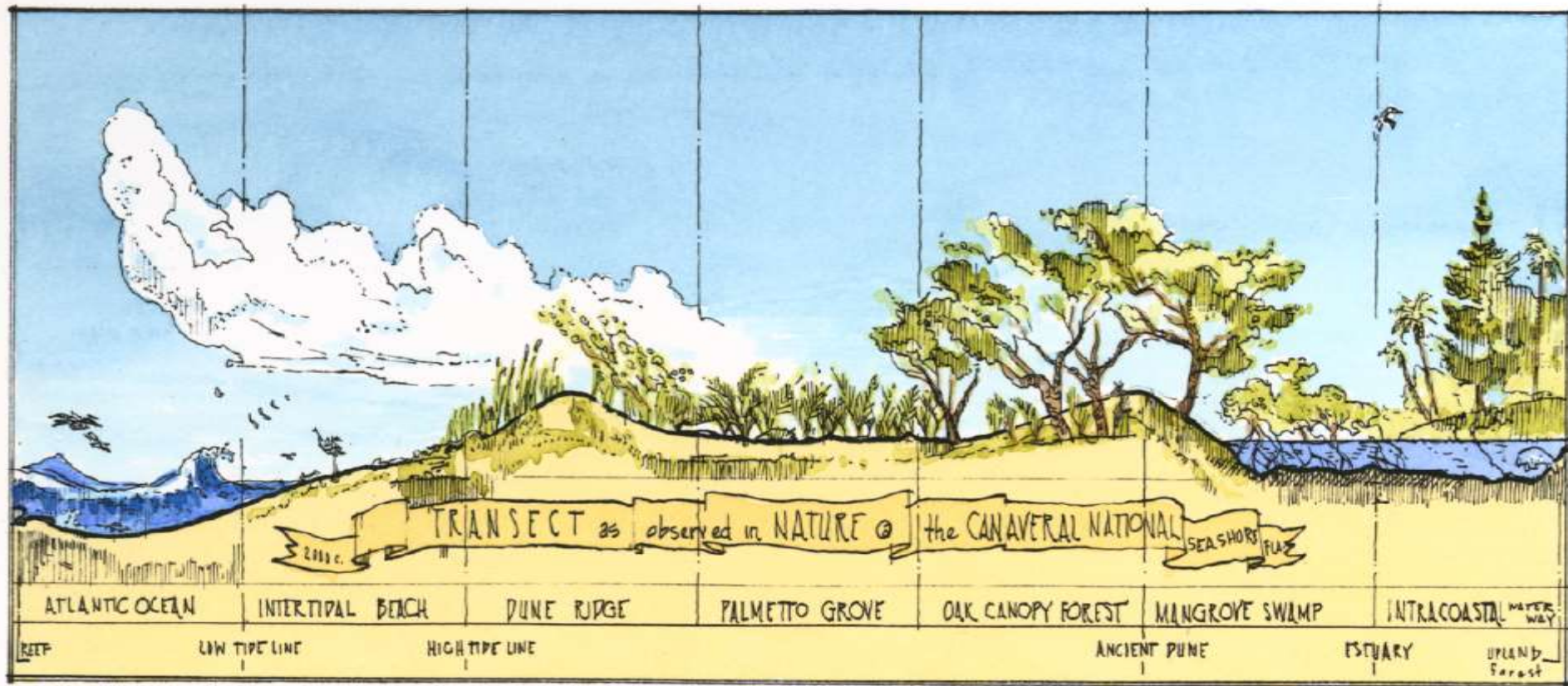








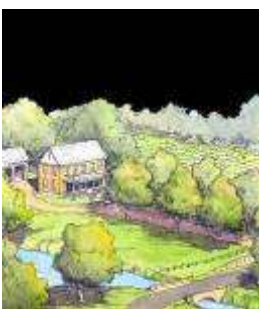
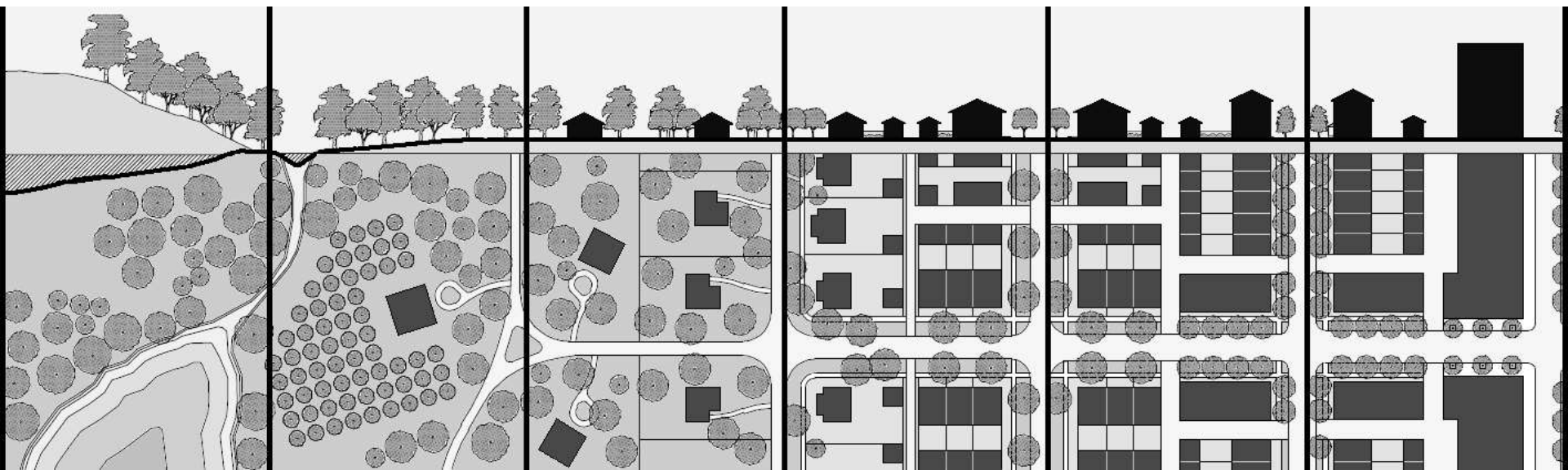
101 > 102



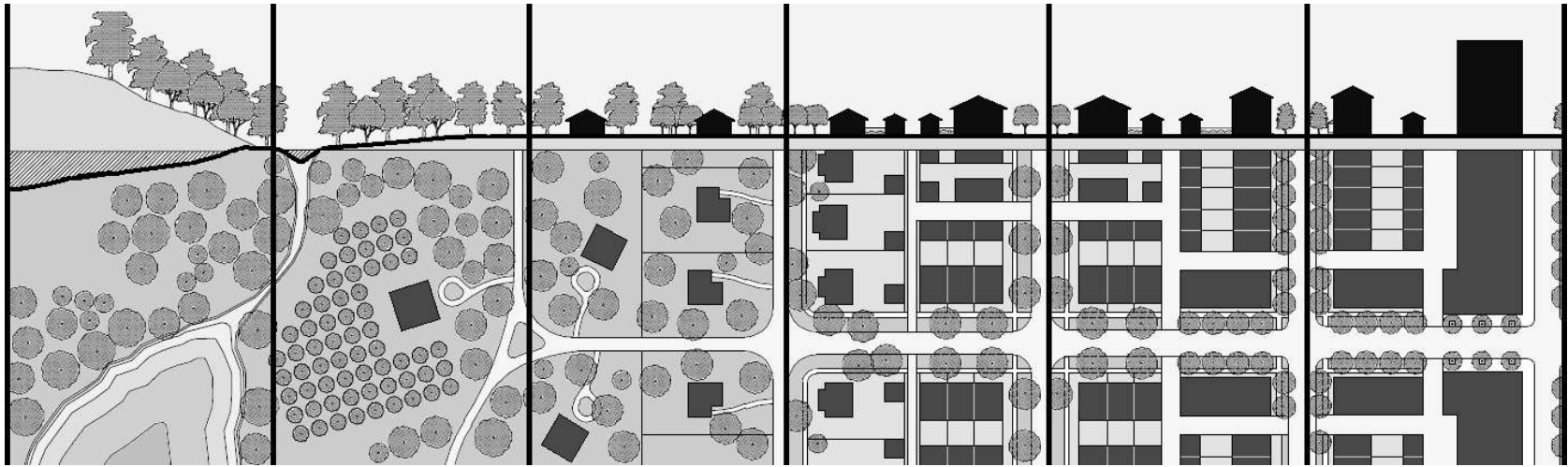
Title: A natural Transect Illustration

Source: James Wassell









T  
1

T  
2

T  
3

T  
4

T  
5

T  
6

Least  
Walkable  
(least  
urban)



Most  
Walkable  
(most  
urban)







SR 50 in Sumter County





















# A local approach to provide Complete Streets....

- **PPM Chapter 21-Transportation Design for Livable Communities**
- **ITE/CNU Recommended Practice: Designing Walkable Urban Thoroughfares**
- **SmartCode**
- **Florida Greenbook – Chapter 19**
- **FDOT TND Handbook**



# On State roads....

Topic #625-000-007  
Plans Preparation Manual, Volume 1 - English

January 1, 2013  
Revised – January 1, 2015

## Chapter 21

### Transportation Design for Livable Communities

21.1	General .....	21-1
21.2	Planning .....	21-2
21.3	Application.....	21-3
21.4	Techniques.....	21-4
21.5	Design Criteria .....	21-5
21.5.1	Design Speed .....	21-5
21.5.2	Number of Lanes .....	21-5
21.5.3	Lane Widths .....	21-5
21.5.4	Horizontal Alignment.....	21-6
21.5.5	Medians .....	21-6
21.5.6	Lateral Offset .....	21-6
21.5.7	Intersections.....	21-9
21.5.8	Lighting .....	21-9
21.5.9	Traffic Control .....	21-9
21.5.10	Landscaping.....	21-9
21.5.11	Parking.....	21-10
21.5.12	Alternative Roadway Paving Treatments .....	21-10
21.5.13	Conversion to/from One-Way Street Pairs .....	21-10
21.6	Pedestrian and Bicycle Considerations.....	21-11
21.6.1	Sidewalks .....	21-11
21.6.2	Crosswalks.....	21-11
21.6.3	Curb Extensions (Bulb-Outs) .....	21-11
21.6.4	Personal Security and Safety Amenities .....	21-12
21.6.5	Bicycle Facilities.....	21-12
21.7	Transit-Systems and Amenities .....	21-12



A1A in Stuart, FL

# On local roads - Florida Greenbook

Topic # 625-000-015  
Manual of Uniform Minimum Standards  
for Design, Construction and Maintenance  
for Streets and Highways

May - 2011

## CHAPTER 19

### TRADITIONAL NEIGHBORHOOD DEVELOPMENT

A	INTRODUCTION .....	19-1
B	APPLICATION .....	19-2
C	PLANNING CRITERIA .....	19-3
C.1	LAND USE .....	19-3
C.2	NETWORKS .....	19-3
D	OBJECTIVES .....	19-6
E	DESIGN ELEMENTS .....	19-8
E.1	Design Controls .....	19-8
E.1.a	Design Speed .....	19-8
E.1.b	Movement Types .....	19-8
E.1.c	Design Vehicles .....	19-9
E.2	Sight Distance .....	19-10
E.2.a	Stopping Sight Distance .....	19-10
E.2.b	Passing Sight Distance .....	19-10
E.2.c	Intersection Sight Distance .....	19-10
E.3	Horizontal Alignment .....	19-11
E.3.a	Minimum Centerline Radius .....	19-11
E.3.b	Minimum Curb Return Radius .....	19-11
E.4	Vertical Alignment .....	19-11
E.5	Cross Section Elements .....	19-11
E.5.a	Introduction .....	19-11
E.5.b	Lane Width .....	19-12
E.5.c	Medians .....	19-13
E.5.d	Turn Lanes .....	19-14



Hollywood Blvd,  
Hollywood FL

# Ch 19 Guidance for lower design speeds...

## E DESIGN ELEMENTS

The criteria provided in this chapter shall require the approval of the maintaining authority's designated Professional Engineer representative with project oversight or general compliance responsibilities.

The criteria provided in this chapter are generally in agreement with AASHTO guidelines with a special emphasis on urban, low-speed environments. Design elements within TND projects not meeting the requirements of this chapter are subject to the requirements for Design Exceptions found in Chapter 14 of this manual.

### E.1 Design Controls

#### E.1.a Design Speed

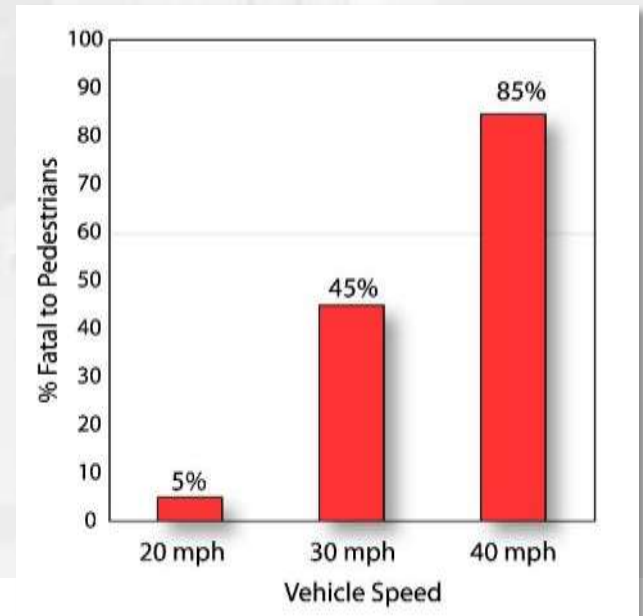
The application of design speed for TND communities is philosophically different than for conventional transportation and CSD communities. Traditionally, the approach for setting design speed was to use as high a design speed as practical.

In contrast to this approach, the goal for TND communities is to establish a design speed that creates a safer and more comfortable environment for pedestrians and bicyclists, and is appropriate for the surrounding context.

**Design speeds of 20 to 35 mph are desirable for TND streets.** Alleys and narrow roadways intended to function as shared spaces may have design speeds as low as 10 mph.

#### E.1.b Movement Types

Movement types are used to describe the expected driver experience on a given thoroughfare, and the design speed for pedestrian safety and mobility established for each of these movement types. They are also





# Where does Ch. 19 apply?

## B APPLICATION

A project or community plan may be considered a TND when at least the first seven of the following principles are included:

1. Has a compact, pedestrian-oriented scale that can be traversed in a five to ten-minute walk from center to edge.
2. Is designed with low speed, low volume, interconnected streets with short block lengths, 150 to 500 feet, and cul-de-sacs only where no alternatives exist. Cul-de-sacs, if necessary, should have walkway and bicycle connections to other sidewalks and streets to provide connectivity within and to adjacent neighborhoods.
3. Orients buildings at the back of sidewalk, or close to the street with off-street parking located to the side or back of buildings, as not to interfere with pedestrian activity.
4. Has building designs that emphasize higher intensities, narrow street frontages, connectivity of sidewalks and paths, and transit stops to promote pedestrian activity and accessibility.
5. Incorporates a continuous bike and pedestrian network with wider sidewalks in commercial, civic, and core areas, but at a minimum has sidewalks at least five feet wide on both sides of the street. Accommodates pedestrians with short street crossings, which may include mid-block crossings, bulb-outs, raised crosswalks, specialty pavers, or pavement markings.
6. Uses on-street parking adjacent to the sidewalk to calm traffic, and offers diverse parking options, but planned so that it does not obstruct access to transit stops.
7. Varies residential densities, lot sizes, and housing types, while maintaining an average net density of at least eight dwelling units per acre, and higher density in the center.
8. Integrates at least ten percent of the developed area for nonresidential and civic uses, as well as open spaces.
9. Has only the minimum right of way necessary for the street, median, planting strips, sidewalks, utilities, and maintenance that are appropriate to the adjacent land uses and building types.
10. Locates arterial highways, major collector roads, and other high-volume corridors at the edge of the TND and not through the TND.

The design criteria in this chapter shall only be applicable within the area defined as TND.

Office Of Roadway Design  
Tallahassee, FL



# TRADITIONAL NEIGHBORHOOD DEVELOPMENT HANDBOOK

STATE OF FLORIDA  
DEPARTMENT OF  
TRANSPORTATION



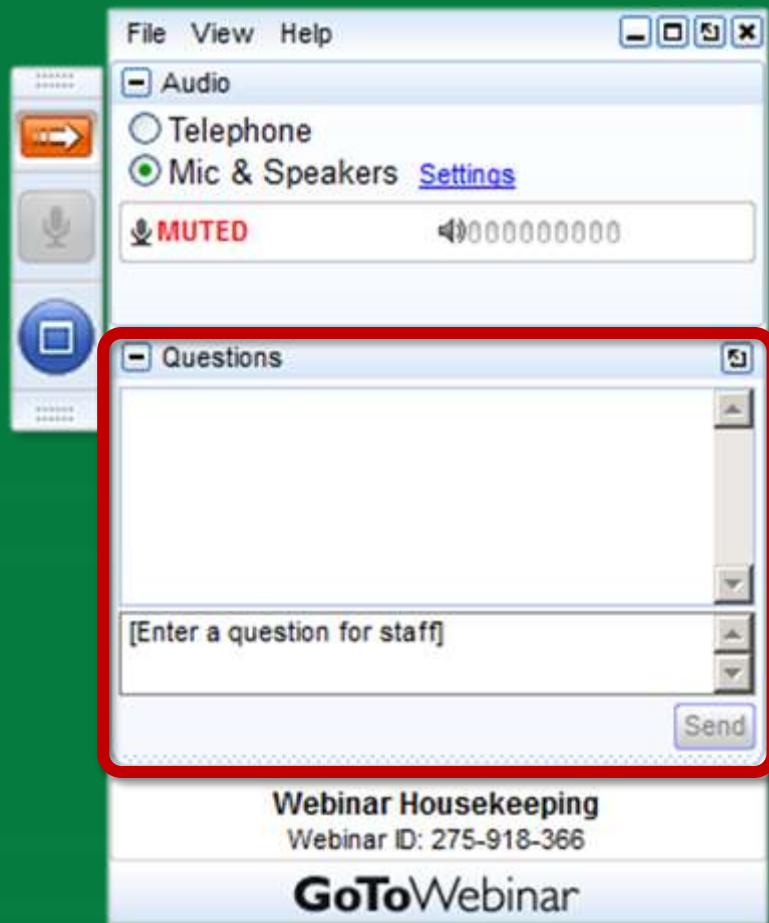
2011

# Tips and Tricks

- **A good scope makes life much easier**
  - » Think vertically at initial scoping
  - » Engage all stake holders at the very beginning
  - » Break down the “cylinders of excellence”
- **Look at what’s already in place**
  - » We actually have ample design guidance out there
  - » What’s lacking is political will and intent
  - » Good scoping helps
- **The Vision Thing**
  - » The Vision sets the direction
  - » Have a good plan in place



# If you have questions:



- Your webinar control panel includes a “Questions” box
- Please click on “+” sign and type any questions in this box
- Please refer to the slide number and/or speaker when you post your question
- Please keep your questions succinct!
- Staff will ask the presenters questions, as time permits

## This webinar has been approved for:

- 1.5 AICP CM credits for planners (#9008118)
- 2 CLE credits for Florida Attorneys (#1600415N)
- 1 contact hour for Certified Environmental Health Professionals (email [vyoung@1000fof.org](mailto:vyoung@1000fof.org) for certificate of participation)
- Please complete the survey in the post-webinar email



# Upcoming Webinars

Visit [www.1000friendsofflorida.org/webinar/](http://www.1000friendsofflorida.org/webinar/)  
to find out more!

## REGISTRATION OPEN:

- **2016 Florida Legislative Wrap Up**  
Wednesday, March 23, 2016, noon to 1:30 p.m.  
Approved for 1.5 AICP CM, Applied for CLE & CEHP





Please support 1000 Friends of Florida:

[www.1000friendsofflorida.org/donate-now/](http://www.1000friendsofflorida.org/donate-now/)

If you would like your donation to support 1000 Friends' webinars, please allocate your donation to the DeGrove Education Fund

**AMAZON SMILE**

<http://smile.amazon.com/ch/59-2761163>

