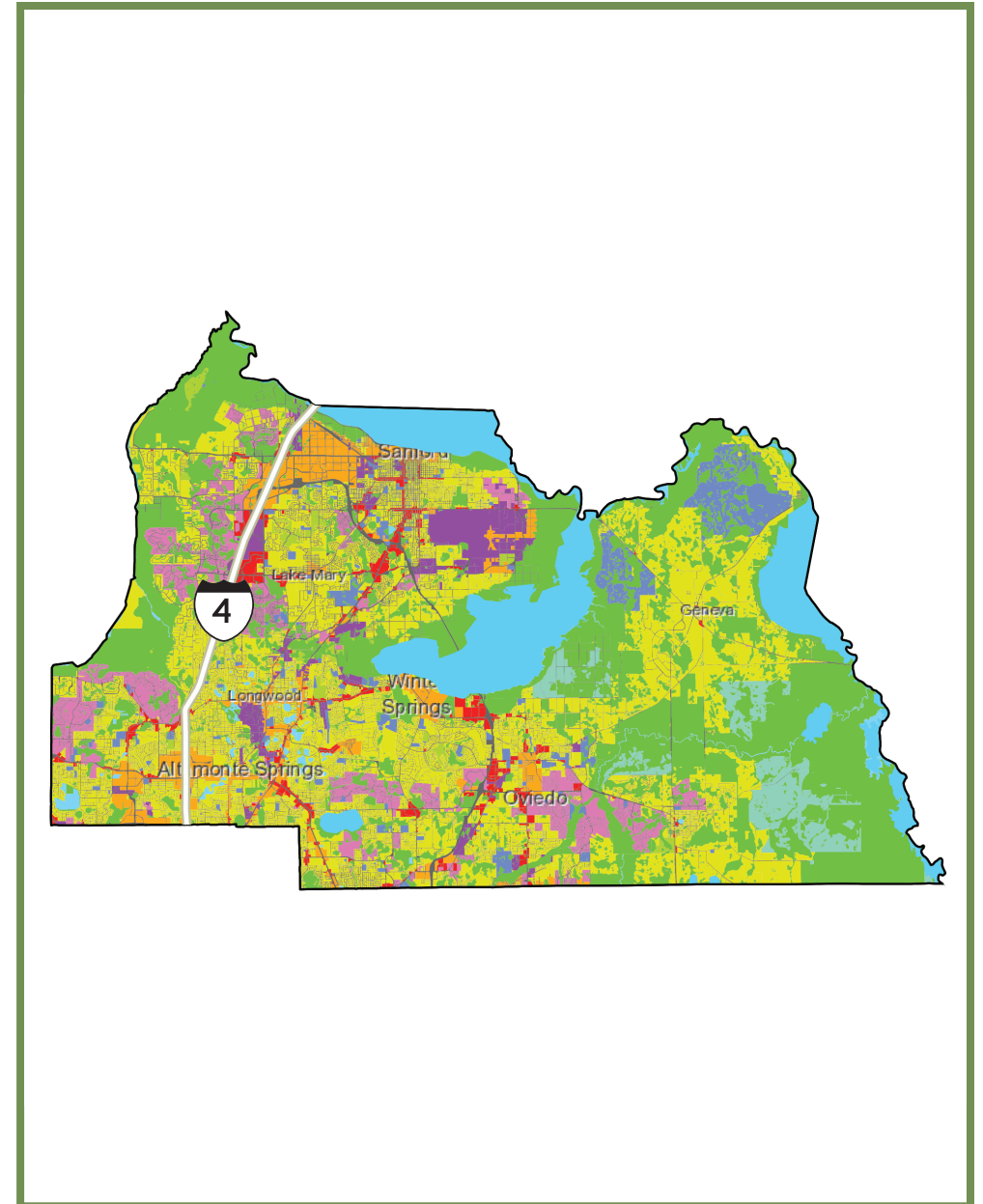


Seminole County

Future Land Use (2020)



A joint project of...



Data: Environmental Systems Research Institute, U.F. Center for Landscape Conservation Planning, U.F. GeoPlan Center, U.S. Census Bureau.
 Projection: Mercator. Service Layer Credits: World Light Gray Canvas Base: Esri, HERE, Garmin, USGS, EPA, NPS
 World Light Gray Reference: Esri, HERE, NPS
 Map date: 4/2023. Map intended only for conservation planning applications.